

College of Medicine and Life Sciences  
**M.D. PROGRAM ADMISSIONS**

**THE**  
 **UNIVERSITY**  
**OF TOLEDO**



**COLLEGE OF MEDICINE  
AND LIFE SCIENCES**  

---

**THE UNIVERSITY OF TOLEDO**

# INSPIRING **DREAMS**

**The University of Toledo** is a student-centered, public, metropolitan research university with nearly 17,000 students and picturesque campuses recognized nationally for their beauty.

The University's Health Science Campus hosts graduate health programs. This campus also is home to the cutting-edge Lloyd A. Jacobs Interprofessional Immersive Simulation Center, which features simulation models, simulated clinical settings, virtual immersive environments and medical visualization.

The mission of The University of Toledo **College of Medicine and Life Sciences** is to improve health in the communities and region we serve. We do this by educating excellent clinicians and scientists, by providing patient-centered and high-quality care and by producing nationally recognized research in focused areas.

FUELING **TOMORROWS**





Raymon H.  
Mulford  
Library  
3025





## PURSUING **OPPORTUNITY**

At The University of Toledo, you'll find world-class education and research opportunities in a supportive medical community that fosters ongoing professional growth and development, as well as investment in community wellness. Our Academic Affiliation with ProMedica and our on-campus hospital, The University of Toledo Medical Center (UTMC), provides access to a wide scope of clinical environments and experiences.





## OUR HISTORY

**1969** The Medical College of Ohio at Toledo (later the Medical University of Ohio) admits its first class.

**2006** The Medical University of Ohio merges with The University of Toledo.

**2015** The UToledo Board of Trustees approves a proposed academic affiliation between the College of Medicine and Life Sciences and ProMedica.



### Our core values

- Professionalism
- Service
- Diversity
- Collaboration
- Discovery

# BUILDING COMMUNITY

The University of Toledo is leading a generation of culturally competent healthcare providers.

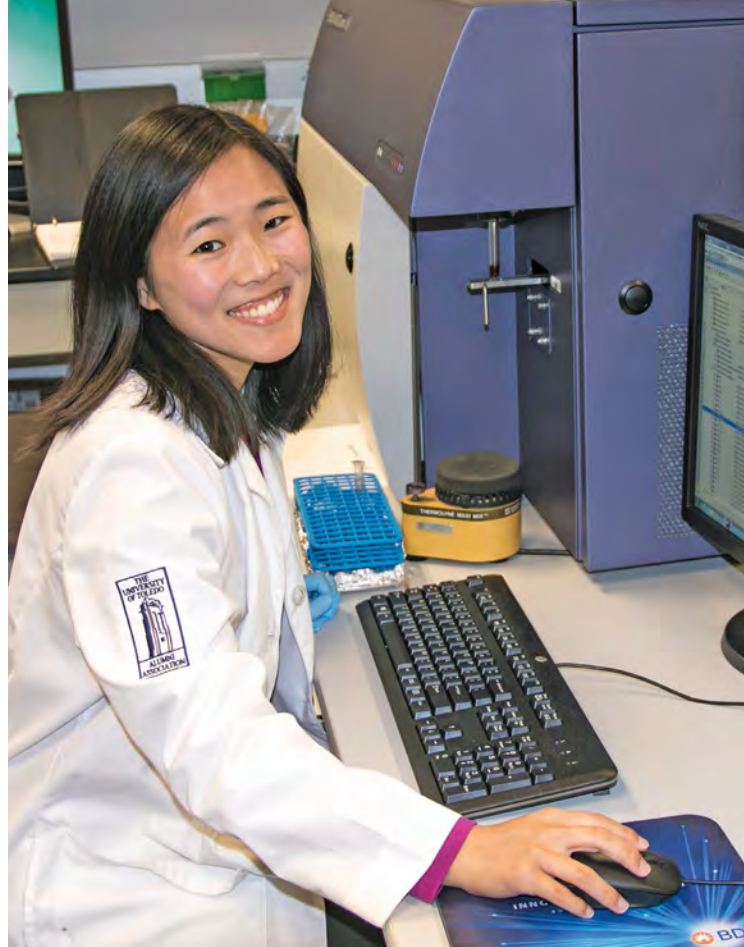
You can flourish in a community of diverse individuals, ideas and perspectives. You'll leave medical school prepared to provide the best possible care for your patients.

The University of Toledo and the College of Medicine and Life Sciences embrace diversity of:

- Thought
- Race
- Ethnicity
- Culture
- Socioeconomics
- National backgrounds
- Religion, age, ability, sex, sexual orientation, gender identity/expression and political affiliation

As an inclusive university, we aim to embrace differences and foster a sense of belonging among all our members, including faculty, staff, students and the community.

These and other organizations provide support and leadership opportunities for members, and deliver programming for the College of Medicine and Life Sciences community. These groups also actively engage in service throughout the greater Toledo community, the state, the country and the world. Many groups are interprofessional — engaging medical students as well as students in physician assistant, nursing, pharmacy and other health professions programs.



A number of student-run professional organizations have missions related to building diversity and inclusion as well as cultural competence, including:

- Asian-Pacific American Medical Student Association
- CommunityCare Clinic
- Community Health for the Underserved
- Health Education Across Latitudes and Longitudes
- Health Science Campus Muslim Student Association
- La Alianza por la Salud Latina (chapter of Latino Medical Student Association, midwest region)
- People of Every Orientation Promoting Liberty in Healthcare
- Student National Medical Association
- Students for Medical Missions



# EMPOWERING EXPERIENCE

UT Toledo medical students train in multiple locations in Toledo and the surrounding area, offering you diverse interactions with patient populations and cultures. Through our partnerships with The University of Toledo Medical Center (UTMC) and ProMedica you'll have ample opportunities for clinical experience and to work with sub-specialists in a variety of fields.

## About ProMedica

ProMedica is one of the region's largest health systems, offering inpatient and outpatient care, senior care services and insurance plans.

The flagship of ProMedica's operations in northwest Ohio is at ProMedica Toledo Hospital and ProMedica Russell J. Ebeid Children's Hospital, the largest tertiary care center in the region. Together, the hospitals feature 816 beds, advanced clinical care and a broad range of medical and surgical specialties, including a Level 1 Adult Trauma Center, Level 2 Pediatric Trauma Center, a joint ProMedica/The University of Toledo College of Medicine Neurosciences Center and the region's largest Newborn Intensive Care Unit.

## Open for Learning

UTMC is located on The University of Toledo's Health Science Campus, home to both clinical operations as well as the University's graduate-level health programs, such as medicine, nursing, pharmacy and medical research operations. The 246-bed hospital serves the southwestern area of Toledo and the extended region and receives patients from rural hospitals for more advanced specialty treatment.

UTMC continues to serve as the region's only transplant hospital, with nationally recognized faculty who specialize in kidney transplantation.

The hospital opened the region's first inpatient detox unit and additionally provides inpatient child, adolescent and senior behavioral healthcare and a continuum of adult outpatient behavioral health treatment services, along with medical and surgical specialties including orthopaedics, a Level 2 Adult Trauma Center and innovative procedures in cardiology and urology not offered elsewhere in the region.



**LEARN MORE** about the  
Academic Affiliation.



# BUILDING COMPETENCY

Our M.D. program embarked on a major curricular change, emphasizing competency-based curriculum with early clinical experience and seamless integration of foundational and clinical sciences.

## **Known as Rocket Medicine, the program emphasizes:**

- Systems-based foundational sciences with clinical integration
- Greater emphasis on clinical reasoning and clinical skills during all four years
- Utilization of more innovative educational methods/approaches
- Focus on interprofessional education, patient safety and career development

## **Pre-Clinical Electives**

As a student in the College of Medicine and Life Sciences, you'll have an opportunity to explore your interests and deepen career-specific competencies through several electives during your foundational years.

### **Examples of Pre-Clinical Electives**

- Casos en Español
- Introduction to Sports Medicine
- Pediatric Longitudinal Experience
- Contemporary Issues in Community Health
- Introduction to Surgery
- Introduction to Clinical Neurology
- Emergency Medicine Scribe Program
- Family Caregiving Aspects of Dementia
- Health Policy and Business of Medicine
- Medical Spanish
- Medical Missions



**I wholeheartedly believe that the integration of clinical experiences and system-based learning is not only preparing my classmates and me for board exams, but it also is giving us the opportunity to use our classroom knowledge in a real-world setting before we even start in the wards.”**

TRISHA KHAMBADKONE

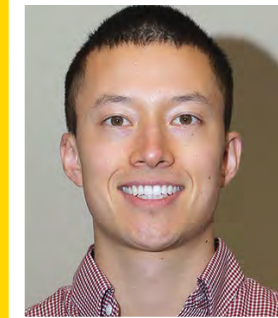




**I've had tremendous clinical experiences. The exposures have been priceless in helping me link our lectures to the broader purpose and utility that awaits us in the future.**

UToledo College of Medicine and Life Sciences is one of the few medical schools where we have such a direct and open connection to our faculty and administration. Our input and feedback are formative in shaping our curriculum and the curriculum of future classes."

JAKE LENNERT



**"The field of medicine is undergoing great change, and I was looking to attend a medical school that would better prepare me for the realities of navigating medicine in today's age.**

UToledo College of Medicine and Life Sciences has made it its mission to prepare students for the board exams and beyond. Test prep is important, but our material expands beyond board knowledge with a greater emphasis on important cases our faculty have experienced in the clinic."

ALEX PETRAK



# ADVISING LEADERS



The College of Medicine and Life Sciences' Office of Student Affairs (OSA) offers career advising and professional development programming to medical students. Using student-centered and evidence-based academic and career advising, cutting-edge leadership programming and transformational bridge ceremonies, OSA works with you to catalyze your growth and professional development throughout your medical school career.

Our career advising spans all four years of medical school — from orientation to graduation — and is systematically linked to critical junctures and transitions through your medical school career. As the hub for career and residency application counseling, OSA offers you:

- Drop-in, individual appointments
- Help with your curriculum vitae
- Personal statement reviews
- Residency application information sessions



OSA also administers the College of Medicine and Life Sciences' Career Exploration and Development Course, a formal program providing M1 and M2 students with the tools and foundation needed to understand career goals, explore and evaluate specialties, and ultimately choose a medical career.

## Launching Futures

OSA also supports your research interests by helping you connect with faculty-mentored research projects and national conferences where you can present your work. You also have opportunities to serve on UToledo's campus-wide committees with faculty, staff administrators and community members.

## Celebrating Success

OSA sponsors several events to celebrate your achievements, bridge your transitions from one stage to the next and offer opportunities to rededicate yourself to the ideals of the medical profession.

Major events include:

- New medical student orientation
- White coat ceremony
- Student clinician ceremony
- Residency Match reception
- College of Medicine and Life Sciences commencement





### Academic Enrichment Center

Take advantage of academic support services in our Academic Enrichment Center (AEC). Health science professional programs facilitate student engagement and collaboration, foster self-directed learning and provide resources that contribute to academic success.

#### AEC services include:

- Drop-in tutoring
- Individual and group tutoring
- Mentoring program
- Academic counseling

### Academic Test Center

The Academic Test Center offers you comprehensive support for medical student testing. It is one of only eight centers nationwide approved to administer the National Board of Medical Examiners (NBME) computer-based examinations, as well as the United States Medical Licensing Examination (USMLE) Steps I, II and III exams. The center's location on the UToledo Health Science Campus is a huge convenience for our students.

The center has been designed with two objectives at the forefront — security and elimination of stress.

### Ruth M. Hillebrand Clinical Skills Center

The Ruth M. Hillebrand Clinical Skills Center is a nationally recognized facility that creates interactive and formative educational experiences that provide medical and other health professions students with a supportive environment to hone their interpersonal and empathetic skills, as well as their diagnostic and problem-solving techniques.

The Hillebrand Center utilizes Standardized Patients (or SPs). An SP is someone who has been trained to portray — in a consistent, standardized manner — a patient in a medical situation.







## POWERING SUCCESS

The University of Toledo's Health Science Campus is home to centers designed to help you be successful throughout your medical school career.

### **Lloyd A. Jacobs Interprofessional Immersive Simulation Center**

You'll have the opportunity to engage in unparalleled simulation practice at the Lloyd A. Jacobs Interprofessional Immersive Simulation Center (IISC), the University's tri-center learning hub that provides unprecedented experiential and experimental opportunities for interprofessional and interdisciplinary collaboration between healthcare and technology.

Practice surgical skills, visualize medical conditions and anatomy in virtual immersive reality, work with standardized patients or test your proficiency by responding to simulated scenarios. The IISC allows you to leave the clinical environment and practice in a safe space to continue honing your skills. The center is used not only by UToledo students, residents and Fellows, but also by healthcare practitioners across the region for training and professional development.

You also can engage with researchers at the IISC. The center is a hub of interdisciplinary research, facilitating collaborations with the University's colleges of medicine and life sciences; engineering; natural sciences and mathematics; health and human services; law; and business and innovation.



# MATCHING DREAMS

Fourth-year students from The University of Toledo College of Medicine and Life Sciences are successful each year matching into residency programs in specialties that allow them to further pursue their professional goals. From anesthesiology to vascular surgery, our students have matched into more than 25 specialties at top-ranked programs across the country, including The University of Toledo, ProMedica, Cleveland Clinic, University of Michigan, University of Pittsburgh, Indiana University and the Ohio State University as well as residency programs that are part of the United States military. In service to our mission of providing healthcare for our region and state, a significant number of students in recent years have matched into programs in Ohio as well as northwest Ohio specifically.



## Recent Match Specialties

- |  |                                      |
|--|--------------------------------------|
| Anesthesiology                           | Pathology                            |
| Dermatology                              | Pediatrics                           |
| Child Neurology                          | Physical Medicine and Rehabilitation |
| Emergency Medicine                       | Plastic Surgery                      |
| Family Medicine                          | Psychiatry                           |
| Internal Medicine                        | Radiation Oncology                   |
| Internal Medicine/Pediatrics             | Radiology — Diagnostic               |
| Internal Medicine/<br>Emergency Medicine | Radiology — Interventional           |
| Neurological Surgery                     | Surgery — General                    |
| Neurology                                | Thoracic Surgery                     |
| Obstetrics & Gynecology                  | Urology                              |
| Ophthalmology                            | Vascular                             |
| Orthopaedic Surgery                      | Surgery                              |
| Otolaryngology                           |                                      |



Scan the QR code with your smartphone and explore an interactive website to learn more about our annual match results.



### **Admission and Scholarships**

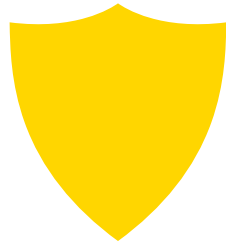
The University of Toledo College of Medicine and Life Sciences participates in the American Medical College Application Service (AMCAS) program. Each applicant must submit his or her application at **[aamc.org](http://aamc.org)** using the AMCAS electronic application.

Processing of preliminary AMCAS applications begins in mid-June. On the basis of the data provided in the preliminary AMCAS application, the Admission Committee may request secondary application information from you. With the secondary application, you must provide recommendations, pay a nonrefundable fee and may opt to provide a photograph. No application fee is charged for pre-screening the AMCAS application. Please visit the COMLS Admissions Office website for current AMCAS and secondary application deadlines for The University of Toledo M.D. program.

Applicants must be citizens of the U.S. or have permanent resident status. We offer more than 20 scholarships to incoming students, as well as nearly 30 scholarships to continuing students. Our Financial Aid Office is here to assist you in applying for loans, grants and other forms of aid.







**Medical School Admissions**

College of Medicine and Life Sciences  
Mulford Library Room 136  
The University of Toledo  
3000 Arlington Ave.  
Toledo, OH 43614-2598

419.383.3680

medadmissions@utoledo.edu

**[utoledo.edu/med](http://utoledo.edu/med)**

   @UToledoMed

FUELING **TOMORROWS**

