



The University of Toledo - Welcome to the Health Science Campus

3000 Arlington Avenue, Toledo, OH 43614
41°37'15"(N) 83°35'45"(W)
www.utoledo.edu

THE UNIVERSITY OF
TOLEDO
1872

1

2

3

4

5

6

To Main Campus
(3.5 mi) & Scott Park
Campus (4.5 mi)
via Byrne Road

To I-475
via Byrne
Road &
Airport Hwy.



The University of Toledo
Facilities Information Systems
Updated: January 10, 2019
Comments: 419.530.1082

Campus Emergency: Call 911 or
Campus Police at 419-383-2600
HSC Security: Call 419-383-2601.

UT's Call-A-Ride Service is available to Scott Park Campus.
Summer Semester only, call 419-530-1033 for information.

UT is a tobacco-free institution.

BUILDING DIRECTORY

ACC Academic Conference Center	O4
CCE Center for Creative Education	Q3
COB Collier Building, Howard L.	Q2
DCC Dana Cancer Center, Eleanor N.	O4
DOW Dowling Hall, Ida Marie	O3
EDU Educare Center	U5
EPG Emergency Power Generator Building	R2
FSB Facilities Support Building	R3
GMC Glendale Medical Center	U6
GME Glendale Medical East	U6
HEB Health Education Center	P3
HSB Health Science Building, Paul J. Block Jr.	P3
KOB Kobacker Center, Lenore W. & Marvin S.	P4
Laboratory Incubator Center	U2
MLB Mulford Library Building, Raymon H.	P2
NWT Northwest Ohio Medical Tech. Center	S1
RHC Ruppert Health Center, Richard D.	O4
RRC Records Retention Center	U2
UMC University Medical Center (Hospital)	P2

MEDICAL CENTERS

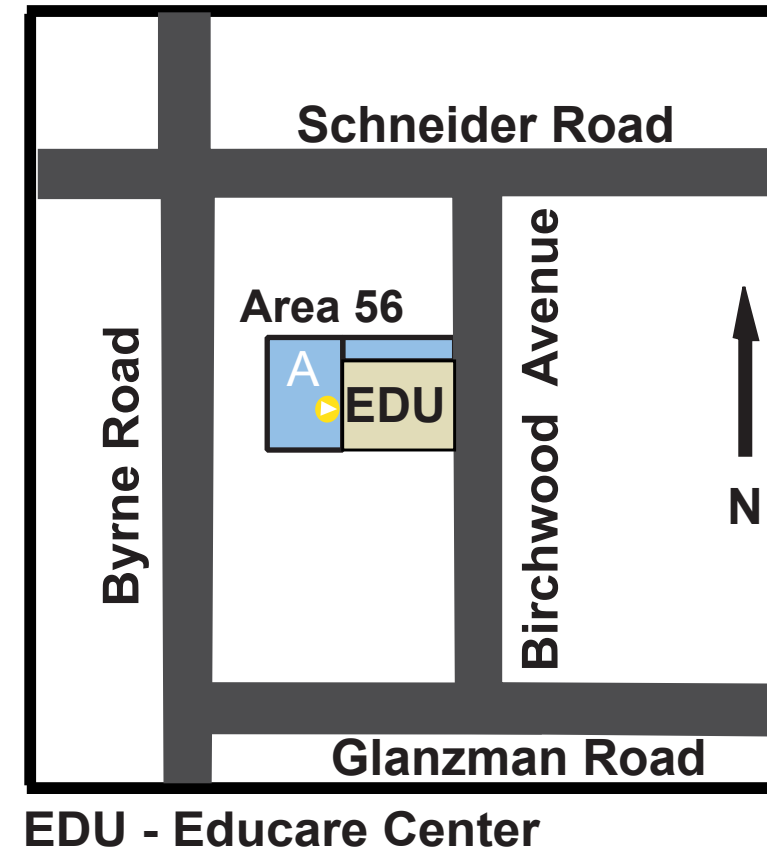
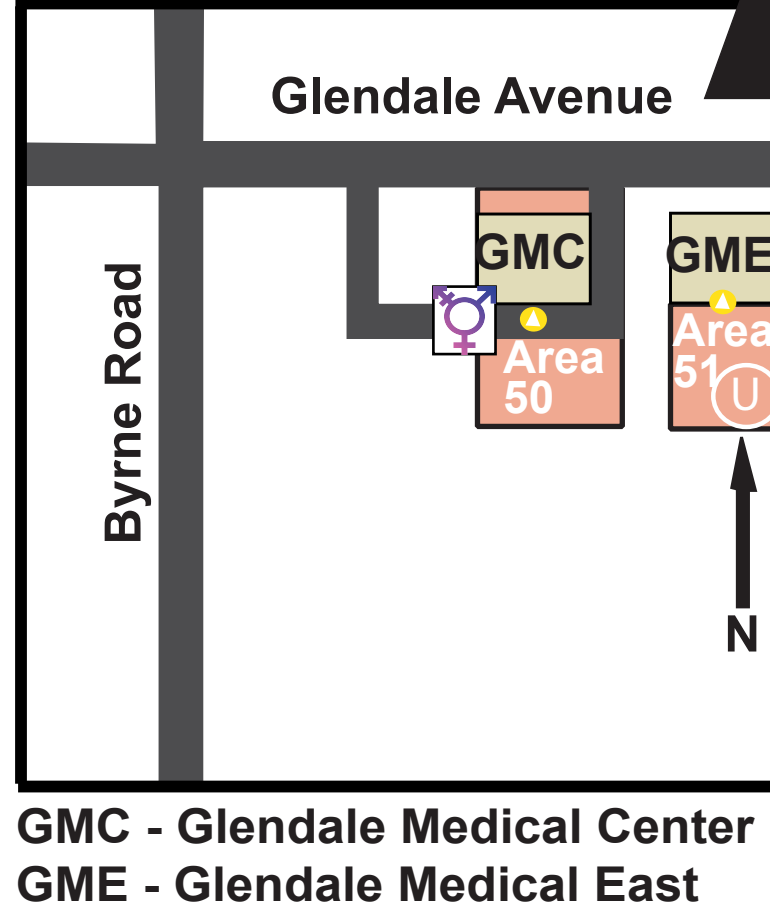
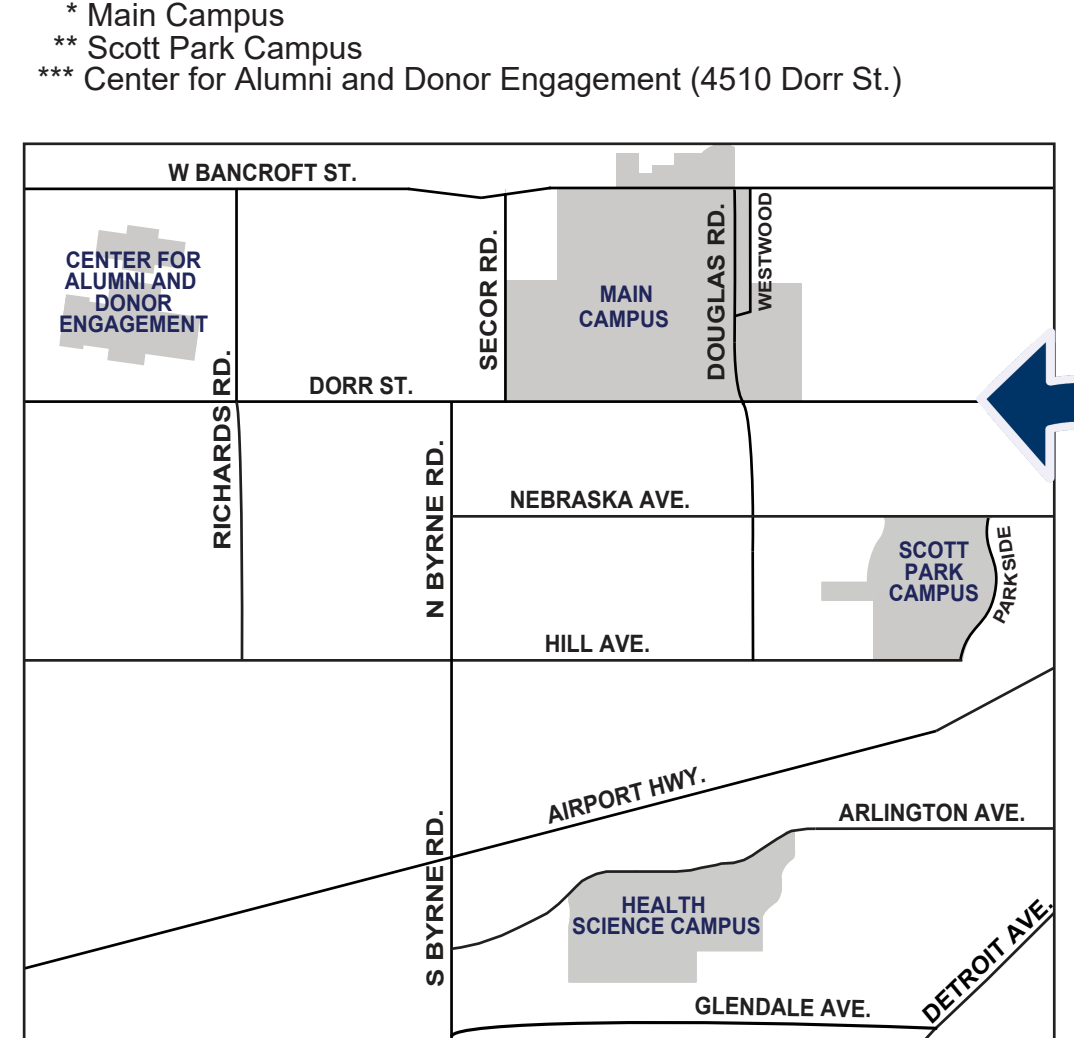
Eleanor N. Dana Cancer Center	DCC
George Isaac Minimally Invasive Surgery Center	DOW
H&V: Heart and Vascular Center	UMC
Interprofessional Immersive Simulation Center	CCE
Orthopaedic Center	DOW
WC: Wound Care and Hyperbaric Center	UMC
MP: UTMC Medical Pavillion	DOW
Gardner-McMaster Parkinson Center	DOW
Senior Behavioral Center	KOB

FREQUENT CAMPUS DESTINATIONS

Alumni Affairs	MLB
Anatomical Donation Program	HSB
Huntington ATMs	UMC, MLB
Bryan Academic Commons	Near RHC
Business Office	GMC
Cafeteria	UMC
Campus Card/ID Center	MLB
Center for Excellence in Autism	RHC
Eleanor N. Dana Cancer Center	DCC
Electric Vehicle Charging Station	EVCS
Emergency Department (ED or ER)	UMC
Gardner-McMaster Parkinson Center	DOW
George Isaac Minimally Invasive Surgery Center	DOW
Gift Shop	UMC
Heart and Vascular Center	UMC
Hospital	UMC
HSC Security	MLB
Human Resources	FSB
ICARE University	MLB
Interactive Museum of Anatomy and Pathology	HSB
Interprofessional Immersive Simulation Center	CCE
Library	MLB
Lost and Found	MLB
Lucas County Coroner	NWT
Medical Records	RRC
Morse Center	DOW
Orthopaedic Center	DOW
Outpatient Therapy	DOW
Patient Customer Service	UMC
Patient Registration	UMC
Radisson Hotel at The University of Toledo	N4
Rehabilitation Hospital of Northwest Ohio	N5
Senior Behavioral Health Center	KOB
UT Federal Credit Union	MLB
UTMC Medical Pavillion	DOW
Wolfe Center, Frederic & Mary	HEB
Wound Care and Hyperbaric Center	UMC

ADMINISTRATION DIRECTORY

Office of the President	UH 3500*
Provost & Executive Vice President, Academic	
Affairs	UH 3540*
Chief of Staff	UH 3520*
Vice President, Diversity and Inclusion	UH 3510*
Exec. Vice President, Finance & Administration & CFO	UH 3700*
Vice President, Advancement	AD ***
Exec. Vice President, Clinical Affairs	MLB 213
Sr. Vice President, Student Affairs	UH 3630*
Interim CEO, UT Medical Center	MLB 221
Vice President and Director, Athletics	SV 4060*
Interim Vice President, Enrollment Management	LH 4007*
Vice President and General Counsel	UH 3620*
Vice President, Government Relations	UH 3510*
Vice President, Information and CIO/CTO	R1 2200B*
Vice President, Research	UH 2300
Vice President, Human Resources	AS 2050D**
Office of Board of Trustees	UH 3580*



Map shows locations of UT's Main, Scott Park, & Health Science Campuses

MAP KEY

- Emergency Department
- Patient/Visitor Parking
- Valet Parking Service
- Student Parking (white lined spaces)
 - C Commuters, Other Than First Year
 - D Residents, Other Than First Year
- Faculty/Staff Parking (yellow lined spaces)
 - A Faculty/Staff*
 - E Executive
 - G Gold Pass
 - H HSC Volunteer
 - U Union (Areas 44B, 44E, 46, 51 & 55)
- Handicapped Parking
- Non-UT Parking
- Orthopaedic Center Parking
- Service Vehicle Parking
- Electric Vehicle Charging Station
- Buildings
- Accessible Building Entrances
- Helicopter Pad
- Huntington ATMs
- Non-UT Buildings
- Non-UT Property
- Shuttle Bus Stops
- Wooded Areas
- Gender Neutral Restrooms

* Faculty/Staff may park in student areas.