

Principles of Psychology
 The University of Toledo
 College of Literature, Language, and Social Sciences
 Department of Psychology

Course Number: Psy1010

Section Number: 010

Number of Credit Hours: 3

Instructor:	Wei-Cheng (Wilson) Hsiao	Term:	Fall, 2012
Office Hours:	Mon 11 to 12:30; Wed 9 to 12:30 or by appointment	Times/Class Location:	Mon & Wed 12:30 to 1:45 Snyder-Memorial Room 2110
Office Location:	University Hall, Room 1560	Office Phone:	419-530-2724
Course Website:	https://blackboard.utdl.edu (for e-mails, syllabus, MyPsychLab registration instructions, Psy 1010 psychology research exposure information, course handouts, exams, and grades) http://www.mypsychlab.com (for e-text book, audio book, multimedia library, and additional practice exams)		
Course Email:	Through the Blackboard e-mail function by creating messages (Primary and favored)		
Personal Email:	whsiao@rockets.utoledo.edu (Secondary and less encouraged)		
Instructor's Website:	http://psychology.utoledo.edu/showpage.asp?name=psych_assess_team		

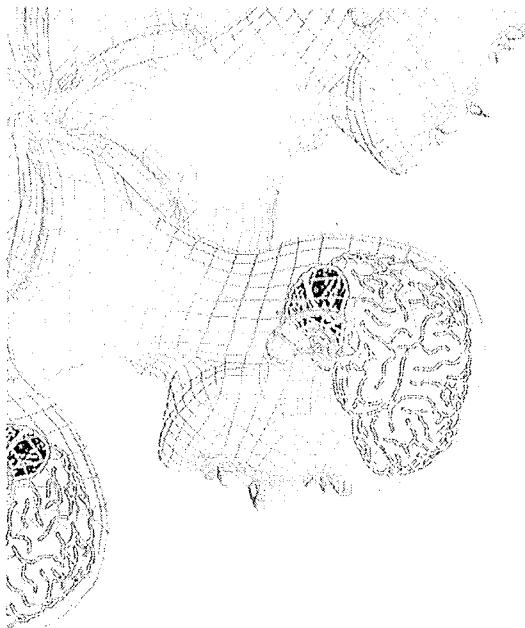
Required Texts and Materials

Kosslyn, S. M., & Rosenberg, R. S. (2010). *Introducing Psychology: Brain, Person, Group* (4 ed.). Boston, MA: Pearson Education.

Standard version: Be aware that used books may not include either CD or online access code for e-book and MyPsychLab. if you buy a used book you will need to purchase the MyPsychLab access code from Pearson website.

Purchase through MyPsychLab Website: See MyPsychLab Course Registration Instructions. (Please note that this did not include a paper copy of the book) MyPsychLab Access Code With eText (Price: \$93.50 USD); MyPsychLab Access Code Without eText (Price: \$38.50 USD)

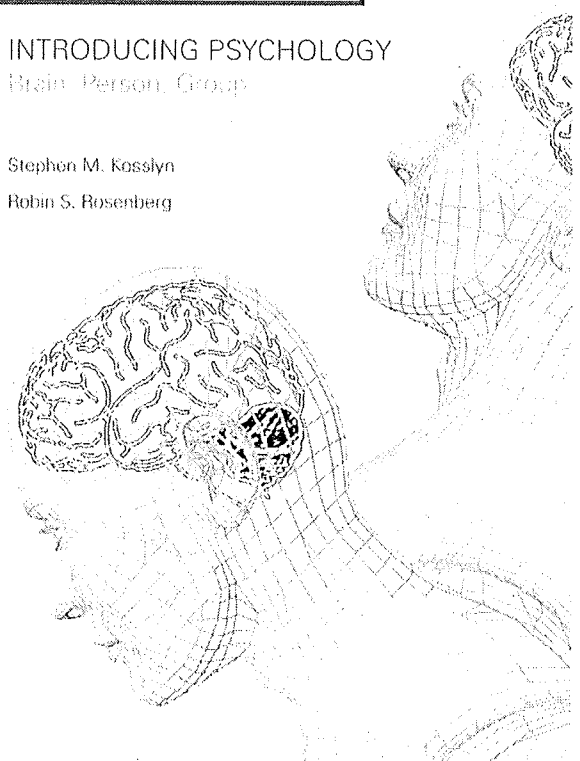
UT Customized Edition: Access code for using e-book and MyPsychLab + paper copy = \$100 (Best deal I found so far)



Introducing Psychology, 4th Edition, Kosslyn & Rosenberg

INTRODUCING PSYCHOLOGY
 Brain, Person, Group

Stephen M. Kosslyn
 Robin S. Rosenberg



Technology Requirements

Browser Check Page

Students need to have access to a functioning computer with internet throughout the semester. The Browser Check Page will enable you to perform a systems check on your browser and to ensure that your browser settings are compatible with Blackboard (the course management system that hosts this course):

<http://www.utdl.edu/utlv/Bb9BrowserCheck/innovation/blackboard/browsercheck.html>

Recommended Browser: Firefox, Chrome, and Safari. Avoid using Internet Explorer because you may encounter problems while accessing lecture content of the course as well as taking online exams.

Software

Student computers need to be capable of running the latest versions of plug-ins, recent software and have the necessary tools to be kept free of viruses and spyware. The computer needs to run the following software, available in the Online Learning Download Center at <http://www.utoledo.edu/dl/main/downloads.html>:

- Word Processing Software
- Adobe Acrobat Reader
- Apple QuickTime Player
- Java Plugin Console
- Adobe Flash Player
- Adobe Shockwave Player
- Mozilla Firefox Browser - **Recommended**

Internet Service

High-speed Internet access is recommended as dial-up may be slow and limited in downloading information and completing online tests. This course material does contain some streaming audio and video content.

Use of Public Computers

If using a public library or other public access computer, please check to ensure that you will have access for the length of time required to complete tasks and tests. A list and schedule for on-campus computer labs is available at http://www.utoledo.edu/it/CS/Lab_hours.html.

Course Description

This is a **General Education Social Science Core** course and there are no prerequisites. This course is designed to help you gain an appreciation of the entire discipline of Psychology and its scientific basis. You will learn about what psychologists study, how they study it, what they know and don't know, and what the difficulties are in understanding behavior. *College students should think about the facts in their textbooks and about how the facts were obtained. Even more important, they should be a little skeptical about what they hear and read about psychology (and a lot of other things, too).* This is why there are *thought questions* on every exam. *Thought questions* require more than memorization; they require that you consider several facts and relate them to each other or apply them to common situations, and sometimes to analyze the facts logically. You cannot get an A in this course if you cannot adequately answer these.

Student Learning Objectives

Based on American Psychological Association Undergraduate Learning Goals and Outcomes

Demonstrate knowledge and understanding representing appropriate breadth and depth in selected content areas of psychology:

- a. **Theory** and research representing each of the following four general domains:
 1. Learning and cognition
 2. Individual differences, psychometrics, personality, and social processes, including those related to sociocultural and international dimensions
 3. Biological bases of behavior and mental processes, including physiology, sensation, perception, comparative, motivation, and emotion
 4. Developmental changes in behavior and mental processes across the life span
- b. The **history** of psychology, including the evolution of methods of psychology, its theoretical conflicts, and its sociocultural contexts
- c. **Relevant levels of analysis:** cellular, individual, group/systems, and culture

d. Themes, persistent questions, & enduring conflicts in psychology

1. The interaction of heredity and environment
2. Variability and continuity of behavior and mental processes within and across species
3. Free will versus determinism
4. Subjective versus objective observations
5. The interaction of mind and body

Students will be able to enumerate evidence underlying beliefs about behavior—

- a. Recognize major **perspectives** of psychology (e.g., behavioral, biological, cognitive, evolutionary, humanistic, psychodynamic, and sociocultural).
 1. Compare and contrast major perspectives
 2. Describe advantages and limitations of major theoretical perspectives
- b. Recognize different **research methods** used by psychologists.
 1. Describe how various research designs address different types of questions and hypotheses
 2. Articulate strengths and limitations of various research designs
 3. Distinguish the nature of designs that permit causal inferences from those that do not

Students will demonstrate an influence of psychological principles on their behavior, specifically study strategies

- a. Demonstrate self-regulation in **setting and achieving goals**
Regular and spaced study sessions in the form of recall practice quizzes
- b. **Self-assess performance accurately**
Use feedback from quizzes to realistically assess own knowledge

Students will answer short essay questions with concise clear statements that directly address the question

- a. Demonstrate **professional writing** conventions (e.g., grammar, audience awareness, formality) appropriate to purpose and context

Assessment of Learning

Grades will be based on Exams. Knowledge of the material in the textbook and lectures as well as successful completion of assignments will be demonstrated by correctly answering multiple choice, fill-in, and short essay questions on the textbook, lectures, and content of the assignments.

Course Policies

Academic dishonesty will not be tolerated. Please read The University's Policy Statement on Academic Dishonesty available at <http://www.utoledo.edu/dl/students/dishonesty.html>.

GRADING POLICIES

Student work will be assessed as follows. Specific guidelines, grading criteria, and a timeframe for grades and feedback will be provided as each grading item is announced:

Grading Items	Total Points	% of Final Grade
Attendance (22 lectures)	50	5%
1 Must Pass Quiz	10	1%
13 Practice Quizzes Based on Each Chapter	$10 \times 13 = 130$	$1\% \times 13 = 13\%$
1 Practice Quiz for Final Exam (Ch1 to 13)	$10 \times 1 = 10$	$1\% \times 1 = 1\%$
7 Exams	$100 \times 7 = 700$	$10\% \times 7 = 70\%$
Final Exam	100	10%
Total	1000	100%
Extra Credits Opportunities	See Psy 1010 Psychology Research Exposure Information	

Students are expected to complete and submit all quizzes and exams by the due date listed in the Course Schedule. **Make-up quizzes and exams will not be permitted unless arrangements are discussed and approved well before the required due date.** If you are qualified to take the make-up quizzes and exams, you will receive a **penalty of 2 points** for the delay on **taking the quizzes** and a **penalty of 20 point** for the delay on **taking the exams**. If you must take an exam late because of unexpected death in your family or your own illness, you will not be penalized if you document your reason. Ask questions as soon as possible by email or by phone if you do not understand the syllabus.

Attendance: Attendance is mandatory. There are 22 lectures for this class (class will not meet on exam day). In addition, there are 8 exam days. I will randomly select 5 out of these days (22 lectures and 8 exam days) to check your attendance. To be more efficient in checking the attendance, I will randomly select 1/5 of the class (about 20 students) to

check attendance. If you are not present on the day I check the attendance, you will lose the 50 points, which is 5% of your final grade. **This is the easiest way to get your points** by just showing up for classes. Don't make yourself need to work harder to pass this core class.

Must Pass Quiz: This is the second easiest way to gain part of your points. This quiz is designed to let you experience what it may look like when you take exams through the blackboard. You will have 10 minutes for this quiz. It contains 10 basic questions that you must know for this course. The answers can be easily found in your course syllabus. The types of question include multiple choice, multiple answers, short answer, and essay. These are the types of question you will encounter in the exam. You must answer all questions correctly before you can take the other exams. Luckily, you can re-take it as many times as needed. If you encounter any technical problems, contact the course instructor or IT immediately to solve the technical problems. **All of the technical problems MUST be addressed on 8/22/12 so that I can help you solve the problem before your first exam.** Otherwise, you will be responsible for the consequence of the technical problems you encounter while taking exams. If you do not address any technical problems during the class on 8/22/12, I will assume that you have learned how to take exams in Blackboard. You can start take the practice quiz for the first two chapters to prepare for your first exam and so on.

Practice Quiz for Each Chapter and for Final Exam: This is the third easiest way to gain part of your points. Practice quiz for each chapter and for final exam will be available in Blackboard between two exam days. You will have 15 minutes to finish 20 questions on each chapter. Questions are randomly selected from a test question pool. Question types include multiple choice and true/false. Even if the question is the same, the answers list under the question will still be presented randomly. **You will have unlimited attempts to do the practice quiz.** However, you can only do the practice quiz for the designated chapters between two exams days. The highest grade you achieved in practice quiz will be counted toward your total points for your practice quiz points. Be sure to submit your quiz; if you do not, the pesky computer will not recognize any of your test scores. **Practice Quizzes are due at 11:59 p.m. on the date prior to the exam day.**

Exams: This counts for the majority of your grade. There will be 7 exams during this semester to prepare you for your final exam. **The exam will only be available in Blackboard on the exam day.** You will have 30 minutes to finish 40 questions from the designated range of course content. Question types include multiple choice, true/false, short answer, and essay. About 80% to 85% of the questions will be randomly selected from the same test question pool that is used in your practice quiz for each chapter. Thus, make sure you practice enough quizzes and be familiar with the content before taking your exam. **There is only one attempt for each exam.**

Final Exam: At the end of the semester, you will take the final exam to demonstrate the knowledge you gained from this course. You will have 75 minutes to answer 100 questions. Good news: the final exam will only include multiple choice and true/false questions. However, the 100 questions are randomly selected from a test question pool of approximately 3000 questions ranging from chapters 1 to 13. **The final exam is only available on the FINAL EXAM day. There is only one attempt for the final exam.**

Request for Extended Time on Exams: If you would like to request extended time on taking your exams for certain reasons (such as having testing anxiety, not familiar with the using the computer, or English as your second language), it is reasonable and acceptable. However, you will need to come to University Hall Room 5000 for a supervised exam. You will need to show up at 12:30 p.m. on the exam day. You will have an additional 10 minutes for each exam, including the final exam. That is, 40 minutes to finish 40 questions on your regular exams and 85 minutes to answer 100 questions on your final exam. There will be a lab monitor available to help with typing in passwords and proctoring. You will need to let me know you want to take the supervised exam ahead of time so that I can adjust the time for you prior to your exam. **The request for extended time on exams has to be approved by the instructor before 11:59 p.m. on September 3rd.** Once you decide to take the supervised exam for extended time, you will have to do so across the whole semester. **I will NOT switch you back to have a take home exam.**

For all of your exams (take at home or supervised exam), you are not allowed to use your textbook or notes. Remember, Psychology is the science of mind and behavior. Gestalt Psychology taught us that the whole is greater than the sum of its parts. To reach your maximum potential, the integration of clear mind and the energetic body is the best resource for you to take the exams as long as you prepare yourself well through studying the course materials and doing the practice quizzes.

The grading scale for this course is as follows:

A	=	92.5	-	100%
A-	=	90	-	92.49%
B+	=	87.5	-	89.99%
B	=	82.5	-	87.49%
B-	=	80	-	82.49%
C+	=	77.5	-	79.99%
C	=	72.5	-	77.49%
C-	=	70	-	72.49%
D+	=	67.5	-	69.99%
D	=	62.5	-	67.49%
D	=	60	-	62.49%
F	=		<	59%
W	=			if you drop the course after the end of the drop period.

Not Attending – Failure to take quizzes and exams will be reported on your final grade to the registrar and such non-attendance may affect your financial aid.

Expected Lecture Schedule

Week	Monday	Progress	Wednesday	Progress
1	8/20/2012	Course Introduction, Ch1: What Psychologists do? & How does psychology relate to you?	8/22/2012	Ch1: History & Research Methods Must Pass Quiz (Due at 12:30 p.m. prior to the class starts)
2	8/27/2012	Ch2: Brain - Biology of Mind and Behavior (Neuron, Nervous System & Probing the Brain)	8/29/2012	Ch2: Brain - Biology of Mind and Behavior (Structure of Brain & the Evolution of the Brain)
3	9/3/2012	Labor Day	9/5/2012	Exam1 (Ch1 & 2) Practice Quizzes for Chapter 1 and 2 due at 11:59 p.m. on 9/4/12
4	9/10/2012	Ch3: Brain - Sensation and Perception (Vision)	9/12/2012	Ch3: Brain - Sensation and Perception (Hearing, Smell, Taste, & Somasthetic Senses) Ch4: Brain/Person - Learning (Types of Learning / Cognitive & Social learning)
5	9/17/2012	Ch4: Brain/Person - Learning (Types of Learning / Classical vs. Operant Conditioning)	9/19/2012	Exam2 (Ch3 & 4) Practice Quizzes for Chapter 3 and 4 due at 11:59 p.m. on 9/18/12
6	9/24/2012	Ch5: Brain/Person - Memory	9/26/2012	Ch6: Brain/Person - Language
7	10/1/2012	Fall Break	10/3/2012	Ch6: Brain/Person - Intelligence
8	10/8/2012	Exam3 (Ch5 & 6) Practice Quizzes for Chapter 5 and 6 due at 11:59 p.m. on 10/7/12	10/10/2012	Ch7: Person - Emotion (Theories) Ch7: Person - Motivation (Two important motivations - Hungry & Sex)
9	10/15/2012	Ch7: Person - Motivation (Theories) Ch8: Person- Personality (Historical Perspective & Definition)	10/17/2012	Ch8: Person - Personality (Biological, Cognitive, & Social influence on Personality)
10	10/22/2012	Exam4 (Ch7 & 8) Practice Quizzes for Chapter 7 and 8 due at 11:59 p.m. on 10/21/12	10/24/2012	Ch9: Person - Development (Conception, Birth, Infancy & Childhood)
11	10/29/2012	Ch9: Person - Development (Adolescence, Adulthood, & Aging)	10/31/2012	Exam5 (Ch9) Practice Quizzes for Chapter 9 due at 11:59 p.m. on 10/30/12
12	11/5/2012	Ch10: Brain/Person/Group: Stress & Coping	11/7/2012	Ch11: Brain/Person/Group: Psychological Disorders (Axis I: Mood, Anxiety, & Schizophrenia)
13	11/12/2012	Veterans Day	11/14/2012	Ch11: Brain/Person/Group: Psychological Disorders (Axis II: Eating & Personality Disorders. Additional disorders that students may want to know, such as ADHD/LD, Substance Abuse/Dependence, etc)
14	11/19/2012	Exam6 (Ch10 & 11) Practice Quizzes for Chapter 10 and 11 due at 11:59 p.m. on 11/18/12	11/21/2012	Ch12: Brain/Person/Group - Treatments (Biologically Based Treatments & CBT)
15	11/26/2012	Ch12: Brain/Person/Group - Treatments (Insight-Oriented & Treatment Variation and Issues)	11/28/2012	Ch13: Group - Social Psychology (Social Cognition)
16	12/3/2012	Ch13: Group - Social Psychology (Social Behavior)	12/5/2012	Exam7 (Ch12 & 13) Practice Quizzes for Chapter 12 and 13 due at 11:59 p.m. on 12/4/12
17	12/10/2012	Final Exam Week - Good Luck Practice Quizzes for Final Exam due at 11:59 p.m. on 12/9/12		