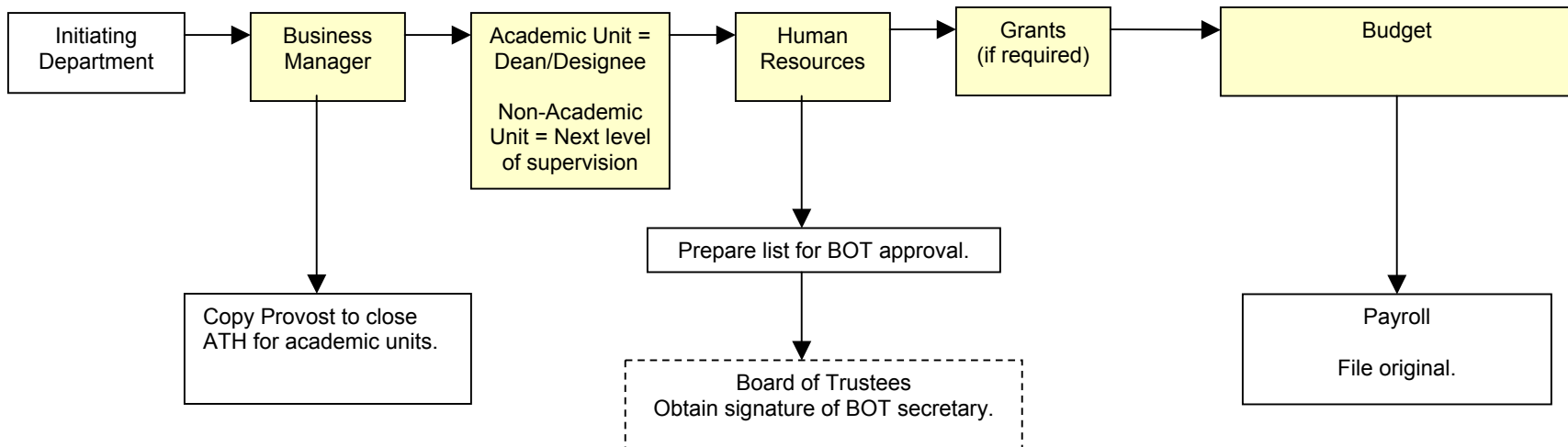


#### 4. Staff Personnel Action (SPA) Form Specific, New Hire Positions

##### Specific, New Hire

- 1100 Administrative—Non-Academic (non-bargaining unit)
- 1110 Classified Exempt
- 1120 CWA
- 1180 UTPPA
- 1280 Post-Doctoral Associate

#### Staff Personnel Action (SPA) Form (New Hire)



**NOTE: Shaded boxes are the “Required Signatures” needed to get a paycheck processed.**