

# Toledo-Lucas County Health Department Seasonal Influenza Activity Summary

MMWR Week 6

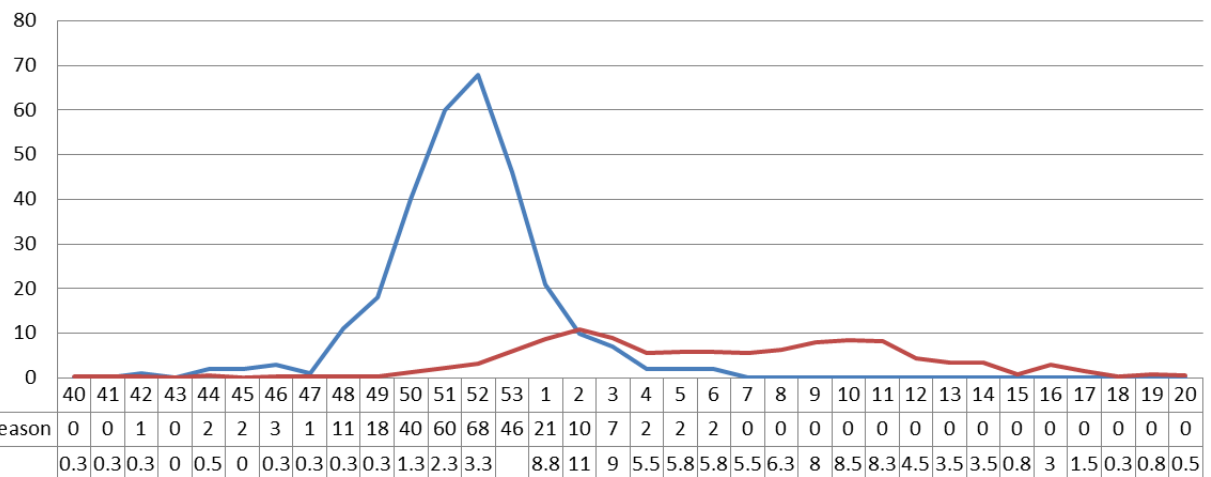
February 8-14, 2015

## Current Influenza Activity Levels:

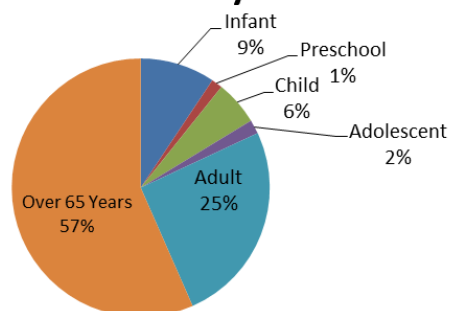
- Lucas County had **2** confirmed Influenza-associated Hospitalizations, bringing the total to **296** as of February 14, 2015. There was one influenza-related death in February reported by the Toledo-Lucas County Health Department during MMWR Week 6.
  - Graph 1 illustrates the current confirmed Influenza-Associated Hospitalizations compared to baseline, which is a four year average excluding the 2009 pandemic year.
  - Females account for 57% of the hospitalizations and males account for the remaining 43%.
- \*Lucas County accounts for **3.8%** of all Influenza-Associated Hospitalizations in Ohio for the 2014-2015 flu season thus far.

**Graph 1 2014-2015 Confirmed Influenza-Associated Hospitalizations by MMWR Week for Lucas County**

Confirmed Influenza-Associated Hospitalizations



## 2014-2015 Age Distribution of Influenza-associated Hospitalizations in Lucas County



Infant: 0-2 years

Preschool: 3-5 years

Child: 6-12 years

Adolescent: 13-17 years

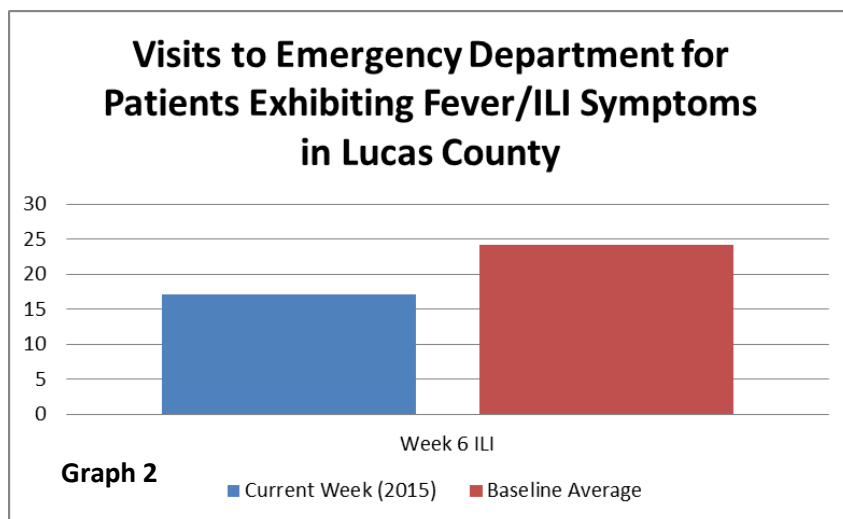
Adult: 18-64 years

Over 65 years

**\*\*According to the CDC, There are early indications that this season may be severe, especially for people aged 65 years and older and young children.**

**Summary of State Data:** During week 6, influenza-like illness activity decreased in Ohio, the proportion of outpatient visits for ILI was 1.37%, which is above the average percentage of visits for this time period. 130 Influenza-associated hospitalizations were reported from these regions: 38 from Central, 21 from East Central, 5 from Northeast, 10 from Northwest, 26 from Southeast, 17 from Southwest, and from 13 West Central. The percentage of emergency department visits with patients exhibiting constitutional and fever/ILI symptoms are below baseline averages.

\*The number of emergency department visits with patients exhibiting fever/ILI symptoms was below the baseline in Lucas County for MMWR week 6. ILI (Influenza-Like Illness) is defined as a *fever greater than or equal to 100 degrees F AND a cough or sore throat*. (Graph 2)



#### State Surveillance Data:

- ODH lab reports results for those cases that are PCR positive for seasonal influenza. 2014-2015 Season Positive results: (1) A/PdH1N1; (990) A/H3N2; (12) Influenza B (through 02/14/15).
- The National Respiratory and Enteric Virus Surveillance System (NREVSS) has reported 14,062 RT-PCR influenza tests performed at participating facilities during the 2014-2015 Season, the following represents those specimens that tested positive: (0) H1N1, (505) H3N2, (825) Flu A Not Subtyped, and (67) Flu B (through 02/14/15).
- 6 influenza-associated pediatric mortalities have been reported for the 2014-2015 season (through 02/14/15).
- Incidence of confirmed influenza-associated hospitalizations in 2014-2015 season = 7738 (through 02/14/15).

**Regional Surveillance:** During week 5 (February 1– February 7, 2015), influenza-like illness activity among the states surrounding Ohio (Region 5) decreased. Influenza activity ranged from Minimal to High activity. The proportion of outpatient visits for ILI was 1.9%, which is above the regional baseline of 1.7%. Michigan, Kentucky, and West Virginia report Regional activity. Indiana, Ohio, and Pennsylvania report Widespread Activity.

#### Important Flu Information:

Key Flu Indicators provided by the Centers for Disease Control and Prevention

- According to this week's FluView report, influenza activity is still elevated but is decreasing and some key indicators that measure severity are leveling off or decreasing also.

- Flu activity is likely to continue for several more weeks.
- The cumulative hospitalization rate for people 65 years and older is the highest of any age group but the rate of increase has slowed.
- Flu activity has been elevated for 12 consecutive weeks nationally. An average season lasts about 13 weeks. However, because this season started relatively early, it could last longer than average. [HERE](#) is a summary of the key flu indicators for the week ending February 7, 2015.

What sort of flu season are we having?

As of February 6, 2015, despite declines in some key indicators, flu remains widespread across most of the country and severity indicators are still high. National influenza-like-illness levels are declining slowly; at a regional level some parts of the country are seeing declines in activity while other parts of the country are seeing increases.

[Read more from CDC here](#)

National Influenza Vaccination Week (NIVW) is a national observance that was established to highlight the important of continuing influenza vaccination.

The Centers for Disease Control and Prevention (CDC) released the dates for 2015!

NIVW 2015 will be observed December 6-12, 2015.

**National activity levels and more information can be found at the following CDC pages:**

- <http://www.cdc.gov/flu/weekly/usmap.htm>
- <http://www.cdc.gov/flu/>

State and Regional data provided by the Ohio Department of Health

[ODH Seasonal Influenza Activity Summary MMWR Week 6](#)