

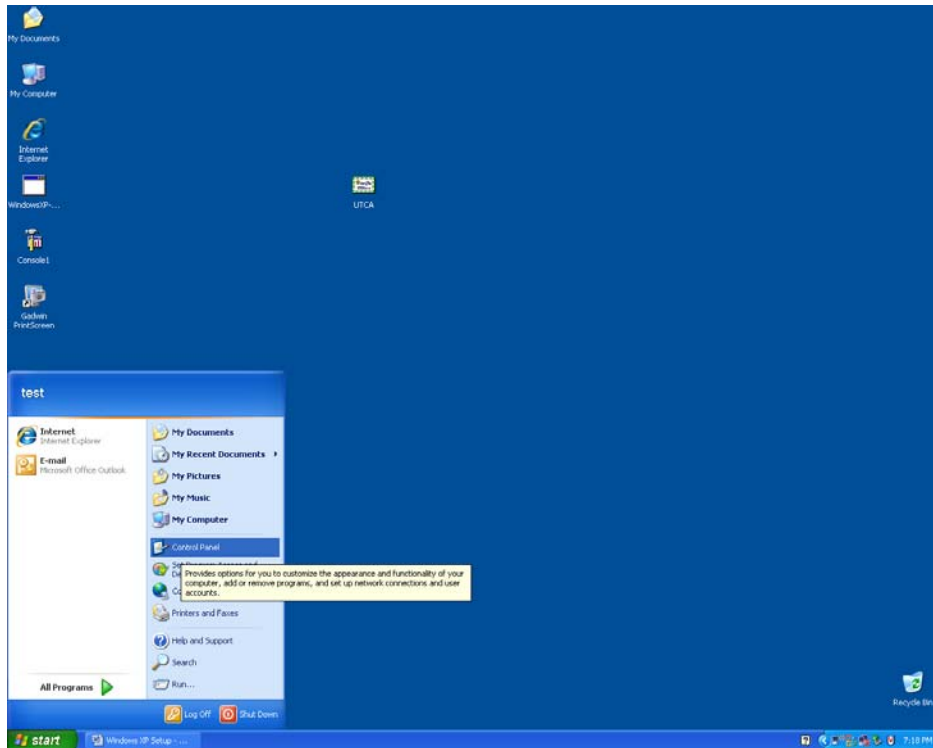
Procedure for setting up PEAP
(Wireless) on a Windows XP machine
at the University of Toledo



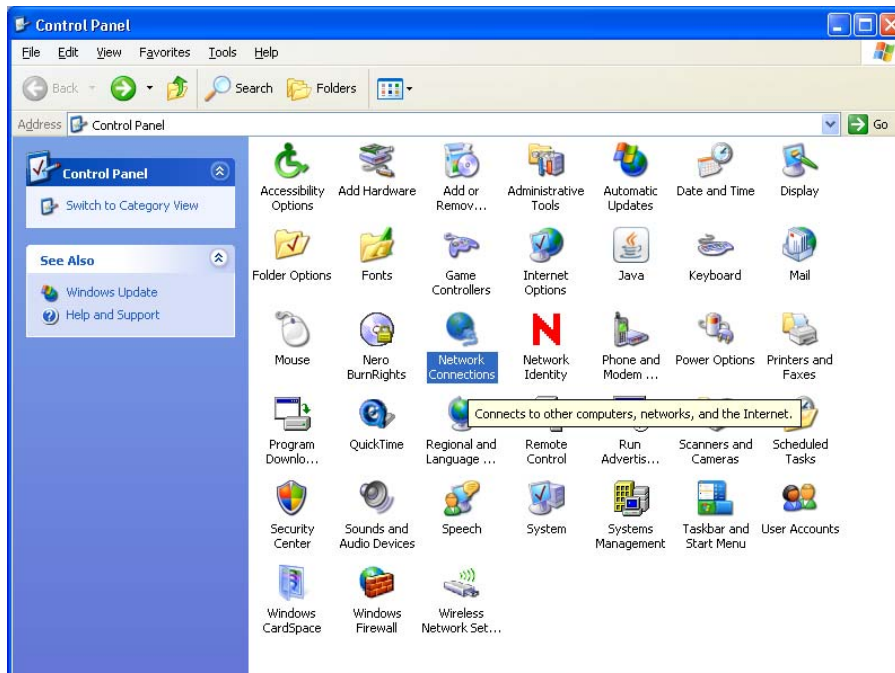
THE UNIVERSITY OF
TOLEDO

1872

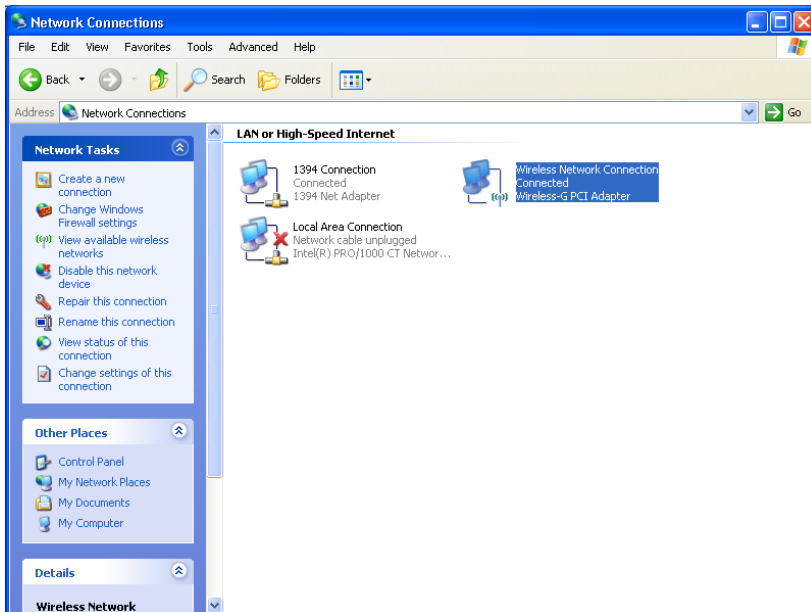
1. Click on the **Start Menu** button and open the **Control Panel**.



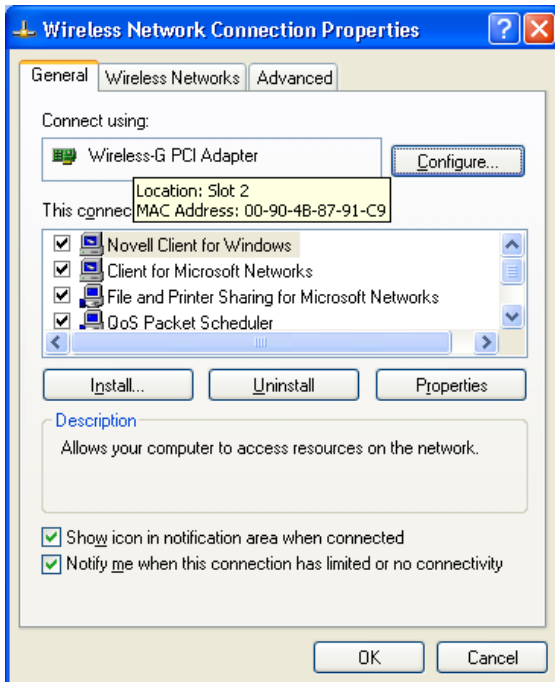
2. Double click on **Network Connections**.



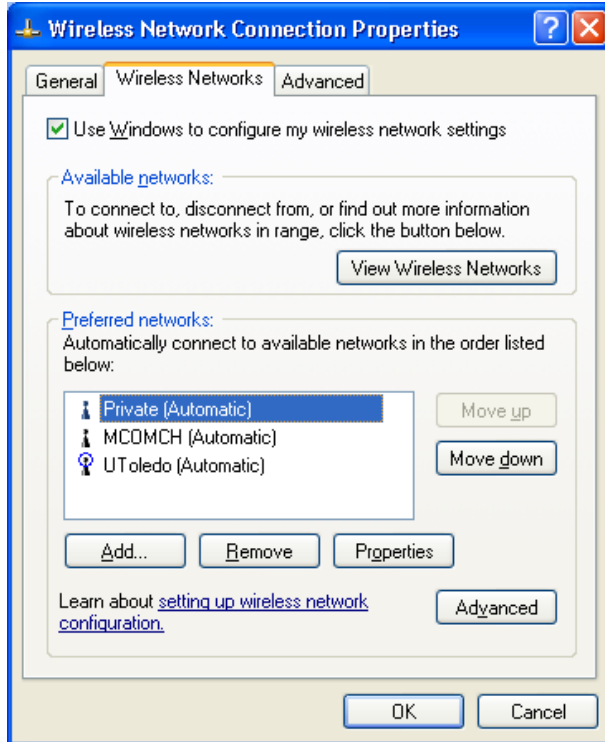
3. Right click on the **Wireless Network Connection** and select **Properties**.



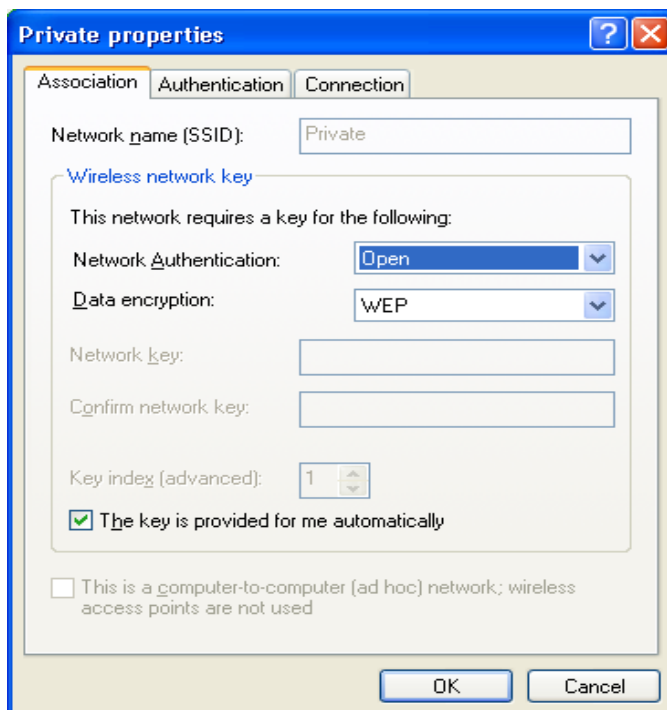
4. Select the second Tab (**Wireless Networks**).



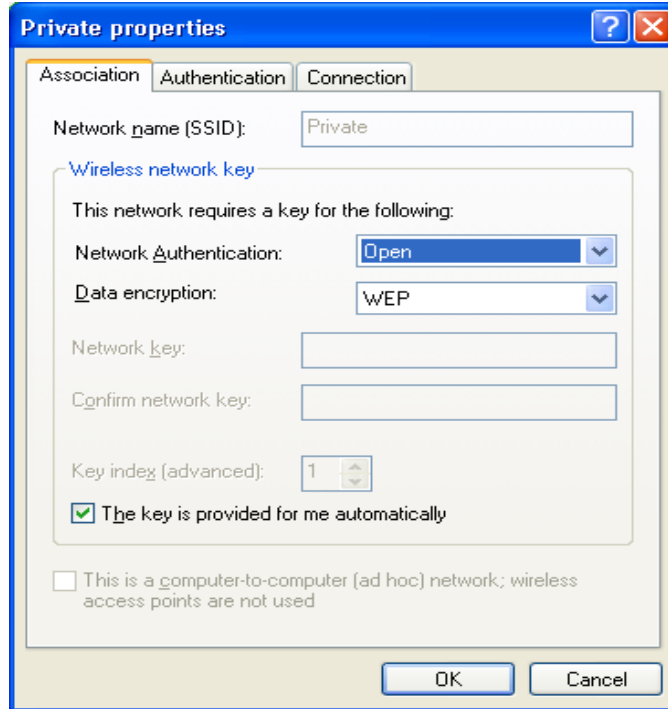
5. Select **Private** under the **Preferred Network** area.



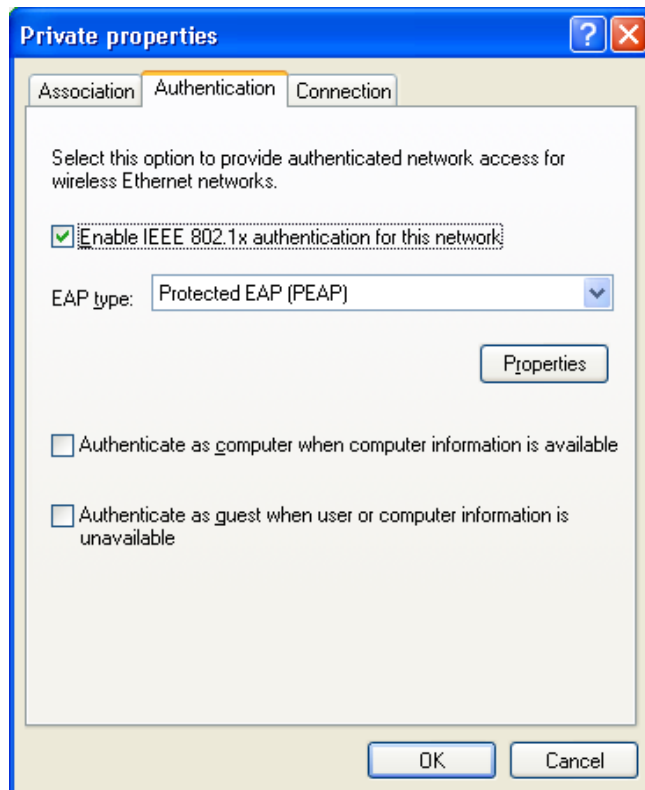
6. Make sure **Private** is highlighted and click the **Properties** button.
7. Make sure the **Network Authentication** is set to **Open** and the **Data encryption** is set to **WEP**



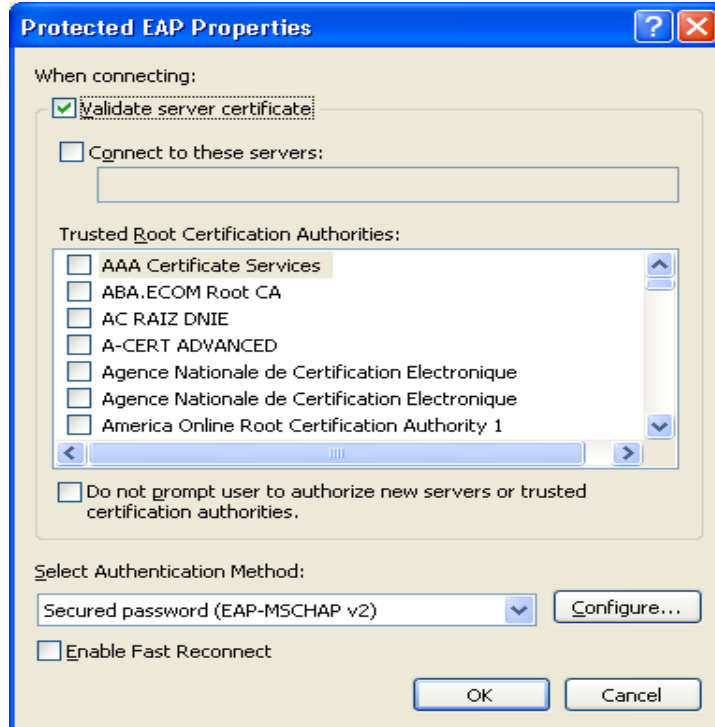
8. Click on the **Authentication Tab**.



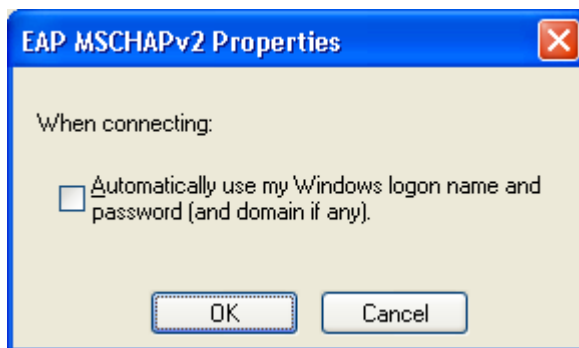
9. Click on the **Properties** button under EAP type.



10. Click on the **Configure** button next to EAP-MSCHAP v2.



11. Uncheck the box (**Automatically use my Windows Logon name and password**).



12. Click **OK**.

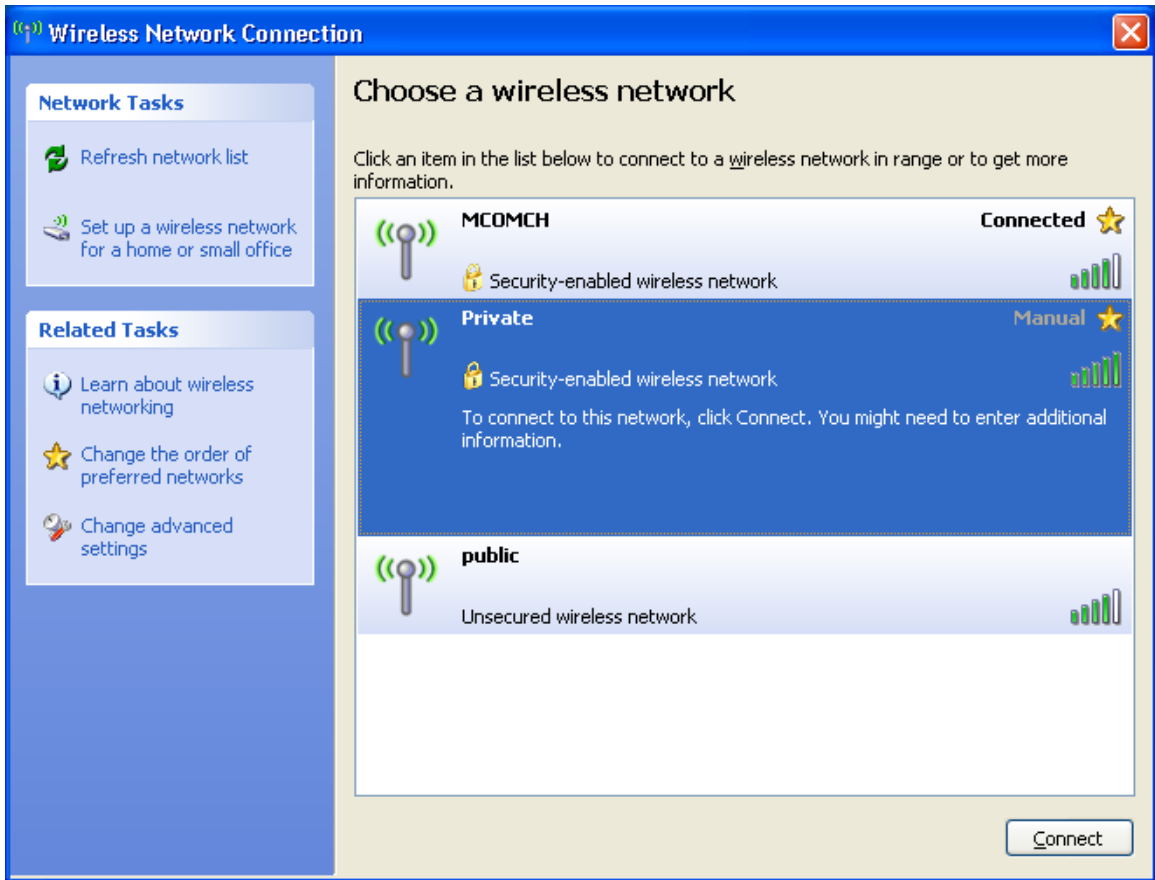
13. Click **OK** again.

14. Click **OK**.

15. Click **OK**.

16. Right click on the **Wireless Network Connection** and select **View Available Wireless Connections**.

17. Select **Private** and click the **Connect** button.



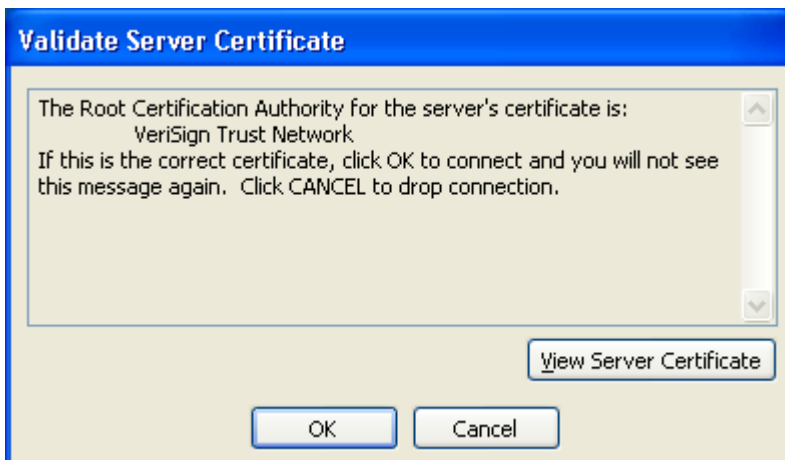
18. A box will pop up at the bottom right hand corner (See below).



19. Click on it and another box will show up asking for a **User Name, Password, and Domain.**



20. Type in your **UTAD User ID, your UTAD password, and UTAD for Logon domain.**
21. Click **OK.**
22. A box will pop up (**Validate Server Certificate**)



23. Click Ok
24. It will connect you to the **UT wireless Network** using PEAP.