

“Approved Minutes ”
College of Medicine Faculty Council Meeting
Friday October 19, 2018
12 noon – 1 pm
Dowling Hall Room 2315

1. Call to order by President Dr. Shoba Ratnam at 12:08 p.m.

Faculty Present: Ali Imran, Tom Blomquist, Shirley Bodi, Francis Brunicardi, Saurabh Chattopadhyay, Joan Duggan, Kate Eisenmann, Patrick Frank, David Giovannucci, Jeff Hammersley, Jennifer Hill, Marthe, Howard, Champa Jayasuriya, Andrea Kalinoski, Punit Kaur, David Kennedy, Jim Kleshinski, Jyl Matson, Mahasin Osman, Shoba Ratnam, Linda Speer, Travis Taylor, Jiang Tian, Rande Worth, Youngsook Yoon-Krawczyk, Nicole Zmijewski, Douglas Brunner, Jermei Laukka, Sivarajan Kumarasamy, Sophia Ali, Robyn Gandy

2. A motion for the approval of the August 17, 2018 COM Faculty Council minutes was approved.
3. Dean’s Report: Christopher Cooper, MD: Dr. Cooper commented on the student to faculty ratio. We are expanding faculty. Full time faculty has been expanded by 20%, from 313 to approximately 380 faculty and the affiliation has made this possible. This is the single largest faculty expansion in several decades. We have also added 281 faculty from ProMedica to 388 current UTMC faculty. Because of this the student to faculty ratio has gone from 0.4 to .92, but we are still below our peers so there is work to be done to improve this. Resources are going to programs such as the Physician Assistant program and Basic Science departments. The overall intent is to improve the campus for students, residents, fellows, and faculty
4. Kashif Haque, our Patent Technology Associate gave a presentation on patent protect and commercial ideas. **Please see associated slides.**
5. Dr. Jim Kleshinski, Senior Associate Dean for Clinical Affiliation provided an update on the ProMedica affiliation. **Please see associated slides.**
6. Report of the Executive Committee: Shoba Ratnam, M.D.
The Executive Committee met Oct. 5, 2018 and the following was discussed:
 - Review of executive council meeting
 - Faculty are encouraged to contact the COM Council with any concerns
 - Dr. Ali introduced Dr. Lori Schuh, Associate Dean for GME and Dr. Ratnam suggested that she will have time to be introduced in an upcoming meeting
 - The faculty mixer was introduced. The next faculty mixer is scheduled for Dec. 7th in Phoenicia, main campus SU 3022. We are the world: Preparing a Fulbright Fellowship application, Rick Francis will present.
 - WebEx has been added to COM Faculty Council meetings to expand reach of meeting to more faculty; please let us know if you are having issues

7. Report of the Standing Committees of the Council

- Office of faculty affairs and development update: Joan Duggan, MD

- The open enrollment date for health care benefits ends on Oct 31st – even if you do not want to change any benefits or dependents, you must certify that by the 10/31 deadline or you will be dropped – so complete the e-paperwork!
- There is a new IRB application software system that is being rolled out. Two emails regarding this have been sent out from the ORSP so please check your email for the details
- There are three policies that affect faculty that are currently open for comment prior to finalization – please review these policies and let your voice be heard if you have thoughts/ideas on how to improve these processes
 - a. Minors on campus
 - b. Contracts
 - c. IT/Technology safety – this is about 8 policies that are being rolled into 2

9. Research Council Report: Marthe Howard, Ph.D.:

- The Office of Research and Sponsored Programs is requiring that all RSP100 forms include Excel budgets from investigators. Investigators should inquire if the NIH budget pages are also acceptable.
- There is a new electronic research system headed by Rick Francis. The first parts to be implemented are IRB and IACUC. The IRB system is in place and now required for all IRB applications. The University is looking into hire support staff to assist with the new system implementation. The second part of the system for grants will be implemented in January, 2019. Please see web links below for introduction to the new IRB system.
http://utnews.utoledo.edu/index.php/10_19_2018/use-new-software-for-research-with-human-subjects-beginning-oct-29
<http://www.utoledo.edu/research/rsp/irbmanager.html>
- There is a new strategic plan metric for publication in high impact journals.
- There have been changes to the intramural grants program: Please see the following link: <http://www.utoledo.edu/research/rsp/urfo/> Faculty are encouraged to apply.
- There is a new policy for researchers who use controlled substances. Please see the following link: <http://www.utoledo.edu/research/rsp/controlledsubstances.html>
- Research misconduct: There is a large increase in the number of cases. Many involve plagiarism, falsification of data, or issues related to clinical trials. In several cases, faculty tried to deal with these issues themselves and not follow policy. These policies are designed to protect the accused, the accuser, and the University. Please encourage faculty to follow the appropriate policy. Please see the following link: <http://www.utoledo.edu/policies/content.html/#grievance>

10. Graduate Council Report: Andrea Kalinoski, PhD:

- A number of College of Graduate studies policies are being revised and will be posted in the next few weeks. These include the Graduate Student Enrollment Policy, Graduate Academic Grievance Policy, and Graduate Academic Dishonesty Policy. Please be sure to look over these policies when posted and comment as needed.

- The new Vice Chair of Graduate Council is Song-Tao Liu, Professor of Biological Sciences.
- The new Interim Associate Dean for Graduate and Student Affairs College of Graduate Studies is Beth Schlemper, Associate Professor, Department of Geography and Planning.
- The new Interim Vice Provost for Graduate Affairs and Dean College of Graduate Studies is Cyndee Gruden, Professor, Department of Civil and Environmental Engineering.
- Upcoming Graduate Council meetings will include discussion on implementation of the UT Strategic Plan. Specific topics will include growing enrollment and programs, student success and role of graduate students (esp. PhD students) in research/creative activity.

11. Clinical Affairs Committee Report: Shobha Ratnam, MD, PhD: No new business to report

12. Faculty Senate Report: David Giovannucci, PhD:

- The Faculty Senate unanimously approved the Physician Assistant program move into Family Medicine program.
- COMLS Faculty Senate: Ruliu Xie has left and needs to be replaced. Dr. Stan Stepkowski was nominated by COMLS faculty for replacing Ruliu Xie.
- The Faculty Senate constitution is being updated. One substantive change is to exclude Deans from faculty Senate. The next meeting is Tuesday Oct 23rd and a draft will go to all faculty for voting.

13. Old Business:

- Update on Faculty Compensation Plan: Bryan Pyles and Nikki Russell: *No new business to report/In the process of generating letters to faculty that will receive a bonus/incentive from the FY18 compensation plan.*
- Update on New Medical School Curriculum: Shirley Bodi, MD: M2's continue to perform competitively with Step 1 comparisons. We are interviewing for Associate Dean for Clinical Undergraduate Medical Education to work on redesigning the clinical experience for M3 and M4.

14. The meeting was adjourned at 1:25pm



**COLLEGE OF MEDICINE
AND LIFE SCIENCES**

THE UNIVERSITY OF TOLEDO

College of Medicine and Life Sciences
Faculty Council Meeting
October 19, 2018
Dowling Hall Room 2315



Agenda

1. Call to Order
2. Approval of Minutes from previous COM Council meeting (August 17, 2018)
3. Dean's Report: Christopher Cooper, MD
4. Patent Technology Associate: Kashif Haque
5. Dr. Jim Kleshinski: Update on the ProMedica affiliation
6. Report of the Executive Committee: Shobha Ratnam, MD, PhD
7. Report of the Standing Committees of the Council
 - Faculty Affairs Committee update: Joan Duggan, MD
8. Research Council Report: Marthe Howard, PhD
9. Graduate Council Report: Andrea Kalinoski, PhD
10. Clinical Affairs Committee Report: Shobha Ratnam, MD, PhD
11. Faculty Senate Report: David Giovannucci, PhD
12. New faculty to serve on committees
13. Old Business:
 - Update on Faculty Compensation Plan: Bryan Pyles and Nikki Russell: *No new business to report*
 - Update on New Medical School Curriculum: Shirley Bodi, MD
14. New Business
15. Adjourn: Next COM Council Meeting December 14th, 2018



2018-2019 Faculty Senate Roster

College of Medicine and Life Sciences (14 senators)

Joan Duggan, 3 years

David Giovannucci, 3 years

Jeffrey Hammersley, 3 years

Laura Murphy, 3 years

Joshua Park, 2 years

Patrick Frank, 2 years

Jason Schroeder, 2 years

David Weldy, 2 years

Ruili Xie, 2 years

Chattopadhyay Saurabh, 1 year

Juan Jaume, 1 year

Beata Lecka-Czernik, 1 year

Nikolai Modyanov, 1 year

Jorge Ortiz, 1 year





THE UNIVERSITY OF TOLEDO
MEDICAL CENTER

University IP & Technology Transfer

Syed Kashif Haque, MS, MD

October 19, 2018



What If?



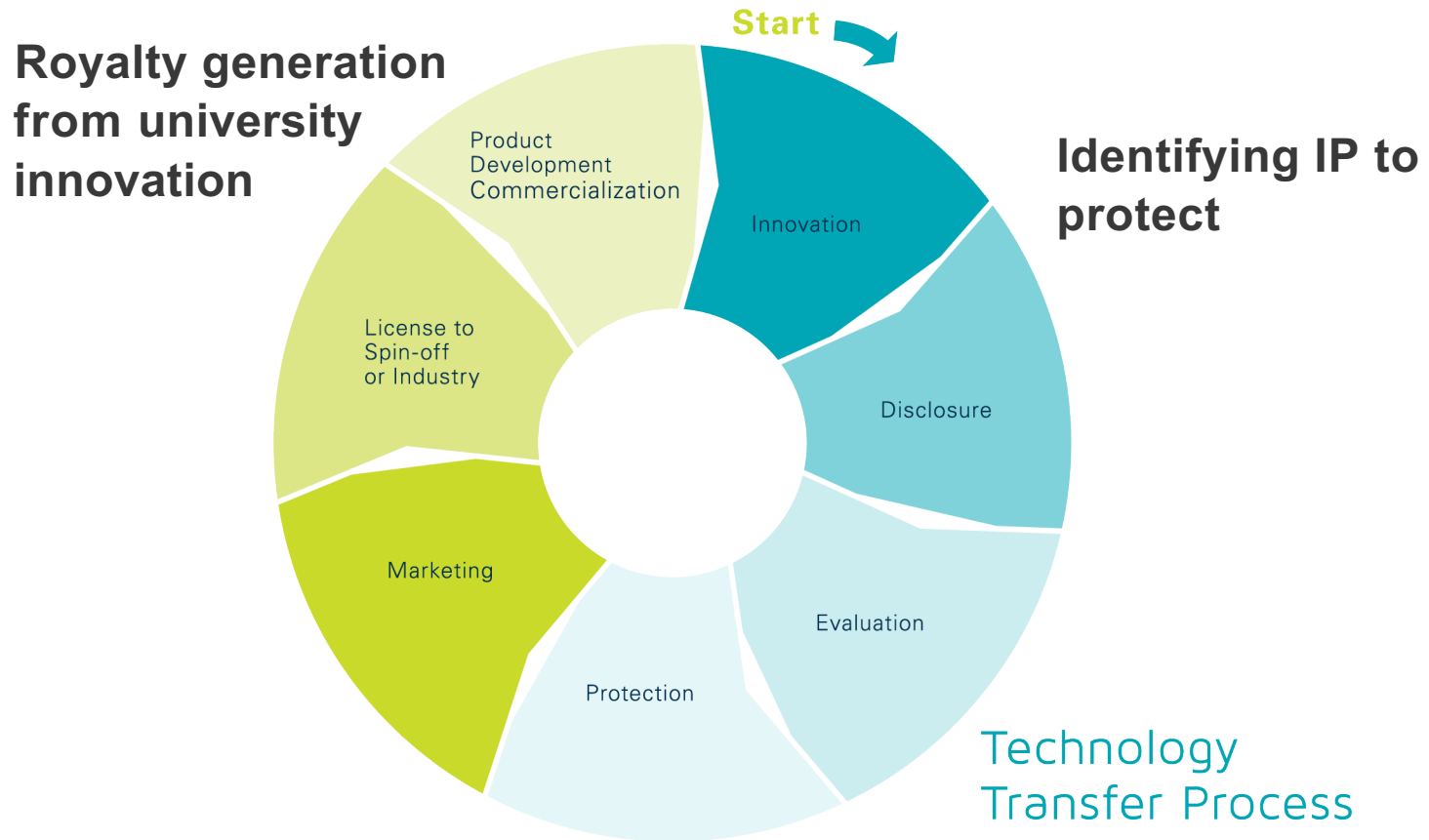
- Someone at UT develops something novel with commercial potential?
- Office of Technology Transfer works with you to help secure the Intellectual Property rights to the invention and transfer the technology.

Technology Transfer Office

- We work with faculty, staff, and students to:
 - Identify novel technologies
 - Protect IP through patents or copyrights
 - Identify potential firms to help commercialize and develop the intellectual property, and
 - Market the technology
 - License the technology
- The ultimate goal is to license the technology to a company and find ways to commercialize research so that this invention is in the best position to become a commercial product.



Tech Transfer Process



Diffusion of innovation & transfer of technology from university labs to marketplace



UT Tech Transfer Statistics

- 349 Invention Disclosures*
- 141 Issued Patents (92 U.S. and 49 International)*
- 68 licenses and/or option agreements*
- 10 start-up companies*
- Ranked among the top 100 universities in the world for patents issued in 2017, by the National Academy of Inventors.
- UT was ranked among the top 75 universities for technology transfer and commercialization in 2017, by the Miliken Institute.
- This 2017 report measures public and private research universities' four-year averages of research expenditures, patents, licenses executed, licensing income and startup companies.

* FY '13-'17



University Policy

- Recognizing that time is of the essence in the protection of the legal interests of both the University and its employees in their inventions, it shall be the duty of each employee to:
 - Report in writing to the Universities all patentable inventions resulting from research or investigations. Such report shall include all the information requested in a standard Invention Disclosure Form (IDF)
 - Cooperate with agents to enable the evaluation and disposition of the submitted invention.
 - Cooperate with agents to secure all legal protection for such inventions, including preparation and signing of all papers attendant thereto



Why Disclose to TTO?

There are several reasons:

1. Disclosure to the Technology Transfer Office starts a process of protecting and commercializing the innovation which provides the greatest opportunity for the innovation to be used in practice for the public good.
2. The same process provides the greatest opportunities for the innovation to generate revenue to be shared among the innovator(s) as well as the University.
3. Employees of University of Toledo are required as a condition of employment or matriculation to disclose their inventions or discoveries.
4. Federal reporting requirements for researchers and universities, as per Bayh-Dole, need to report to federal agency funding research



Patent

Definition: A patent is a right granted by the federal government **to exclude others** from making, using, offering for sale, selling, or importing the invention into the United States for a term of 20 years from the date of filing.

Protects: Provides the patent owner the right to exclude others from practicing the patented invention for duration of time.

Duration: [Utility/Plant] 20 years from date of filing;
[Design] 14 years from patent grant

Purpose: *A quid pro quo*; Disclosure of the invention to the government in specific terms, in exchange for exclusive rights to the inventor



Patentability Requirements

In order to patent an invention, the invention must be:

- Something New (Novel)
- Useful
- Non-Obvious
 - An invention must **not be obvious to one skilled in the art** of the relevant prior art or trade.
- Fully Disclosed



What is an Invention?

An “invention” occurs when there is a “conception” and “reduction to practice”:

- Conception:
 - Formation in the mind of the inventor of a definite and permanent idea of the complete and operative invention, as it is to be applied in practice
- Reduction to Practice:
 - The embodiment of the concept of the invention
 - Actually making the invention
 - Filing of an application is considered a type of reduction to practice



Patentable Subject Matter

A patent can be obtained for any new and useful:

- Process (Method)
- Machine
- Manufacture
- Composition of matter

Patentable:

- “Anything under the sun that is made by man”
 - Oil eating bacteria
 - Software and business methods



Patentable Subject Matter

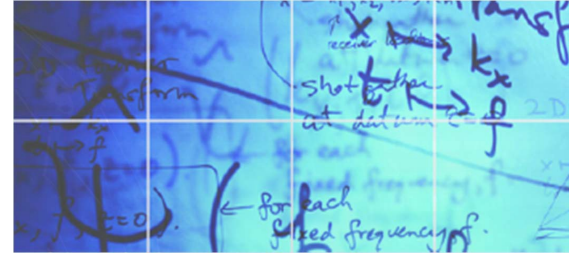
- Software
- Process or Method
- Machines
 - Concrete thing, consisting of parts, or of certain devices
- Article of Manufacture
 - May have parts but interaction is usually static
- Methods of modulating biochemical processes
- Isolated and purified, or altered naturally occurring substances
- Research Tools
- Research techniques and methods
- Chemical compounds or compositions
- Methods of creating compounds or compositions
- Drugs and drug targets
- Novel plants and plant derivatives
- Biological targets
- Man-made micro-organisms



Not Patentable

NOT Patentable include:

- A mere idea or concept,
- Pure mathematical formulas
- Algorithms
- Laws of Nature, Physical phenomenon

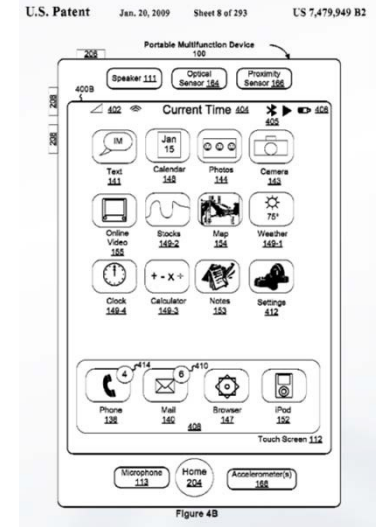


- If your invention is not patentable, that does not mean that you can't manufacture it and earn proceeds from its sale
 - It only means that you don't have the right to exclude others from making and selling your device
 - Example: No one can get a patent on a chair as a device for sitting, however companies/people can still build and sell chairs.

Types of Patents

Utility:

New and useful process, machine, article of manufacture, or composition of matter, or any new and useful improvement thereof
 → How an invention works



Design:

New, original & ornamental design
 → How an invention looks



Plant:

Asexually-produced distinct and new variety of plant



Research Tools

Research Tools are defined as: Full range of resources that are used in the laboratory or clinical setting, including but not limited to:

- Research techniques and methods
- Methods of treatment and diagnosis
- Medical devices and equipment
- Animal models
- Reagents
- Cell lines
- Antibodies
- Proteins/Peptides
- Clones and cloning tools

Federal funding agencies sponsoring research often require that newly discovered research tools be reported.

A Research Tool Disclosure Form (RTDF) should be completed for any novel research tool developed at UT

Once a disclosure is made, appropriate agency reports are filed.



Am I an Inventor?

- You are an inventor if you contribute materially to the conception of at least one of the patent claims.
- If your name is listed on the patent as an inventor and you did not contribute to the conception of the invention, the patent could ultimately be invalidated.
- You are NOT an inventor if:
 - You simply follow the instructions of another in performing experiments
 - You merely suggest how to realize the invention



Co-Inventors

- CoAuthor \neq CoInventor
- Not subjective, this is a legal determination.
- Each must materially contribute to the conception of at least one claim
- Contributions need not be equal
- CoInventors do not need to physically work together



Things to Watch Out For

Upon public disclosure or “publication”:

- All foreign rights are lost
- One year bar date is set to file a patent or all rights are lost in the U.S.



What Constitutes Publication?

- An invention is not novel if it is published and forms “part of the state of the art”
- In U.S. patent law, “state of the art” is defined as “everything made available to even one member of the public anywhere in the world by means of a written or visually displayed oral description, by use or in any other way.”



Examples of Publication?

- Publication in research papers, journals, or magazines
- Abstracts
- Thesis
- Disclosing in job interviews
- Publishing on the internet
- Poster displays
- Corridor presentations
- Exhibitions
- Oral and casual disclosures (**outside the institution**)



Summary

- The UT Tech Transfer Office works with faculty, staff, and students to:
 - Identify novel technologies
 - Protect IP through patents or copyrights
 - Identify potential firms to help commercialize and develop the intellectual property, and
 - Market the technology
 - License the technology
- The ultimate goal is to license the technology to a company and find ways to commercialize research so that this invention is in the best position to become a commercial product.



Questions?

Syed Kashif Haque, M.S., M.D.

The University of Toledo

Office of Research and Sponsored Programs

Technology Transfer Office, MS 218

Phone: 419.530.6229 (phone)

Email: syed.haque@utoledo.edu

Thank You





**COLLEGE OF MEDICINE
AND LIFE SCIENCES**
THE UNIVERSITY OF TOLEDO



UTCOMLS & ProMedica Academic Affiliation Update

**James Kleshinski, M.D.
Senior Associate Dean for Clinical Affiliation**

**COMLS Council
October 19, 2018**

Guiding Principles- Affiliation

- Retain high-quality graduating students, residents, fellows and allied health professionals
- Develop a unique academic/clinical medical partnership focused on safety, quality, efficiency, and patient-centered, cost-effective medical care
- Identify and develop unique areas of research excellence

Guiding Principles- Affiliation

- Develop Toledo Hospital (TH) and Toledo Children's Hospital (TCH) into a premier academic medical center
- Substantially all clinical rotations of UT medical students, residents, and fellows at ProMedica

Academic Affiliation Activities

- Over 300 ProMedica based physicians added to COM faculty
 - M1 Integrated Clinical Experience (ICE)- high impact area
- \$1.8 million allocated for medical student scholarships
- Increase in UT medical students entering UT residency programs
- \$2 million investment for core research lab equipment

Academic Affiliation Activities

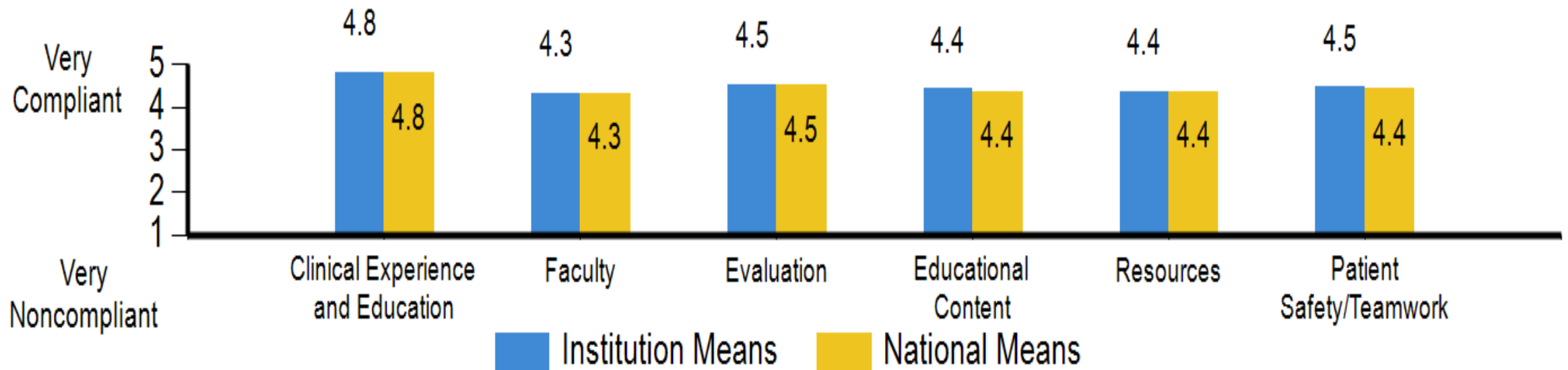
- 180 residents across 20 specialties and nearly all medical students rotating at TH/TCH for AY 18-19
- New/expanded UT residency and fellowship programs
 - endocrinology, hematology/oncology, rheumatology
 - IM primary care track, sports medicine, anesthesia critical care
- 100% of residencies/fellowships accredited at highest level with annual survey at or above national means in all domains

UT GME Residency Program Survey 2017-18

Survey taken: January 2018 - April 2018

389501 University of Toledo - Aggregated Program Data

Institution Means at-a-glance



Student Clerkship Learning Environment 2017-18

Learning Environment Survey
Year 3 - Promedica compared to UT
2017-2018

	Promedica 2017-2018		UT 2017-2018	
	Mean	Count	Mean	Count
I felt that appropriate boundaries were established and maintained by:				
Faculty	4.73	77	4.76	88
Residents and/or Fellows	4.73	77	4.76	87
Nursing personnel	4.64	79	4.70	87
Other hospital and clinical support staff	4.70	79	4.75	88
Medical Students	4.61	77	4.74	88
My classmates and I were treated with respect by:				
Faculty	4.54	78	4.61	88
Residents and/or Fellows	4.42	79	4.61	87
Nursing personnel	4.22	80	4.32	87
Other hospital and clinical support staff	4.50	82	4.55	87
Medical Students	4.70	78	4.63	91
Regard for diversity of race, gender, religion, sexual orientation, age, disability and socioeconomic status demonstrated by:				
Faculty	4.73	77	4.72	87
Residents and/or Fellows	4.79	78	4.71	87
Nursing personnel	4.75	76	4.72	87
Other hospital and clinical support staff	4.71	77	4.75	87
Medical Students	4.74	77	4.75	87
Conflicts, if any and when they occurred, were resolved in a manner respectful of all parties involved by:				
Faculty	4.57	77	4.62	87
Residents and/or Fellows	4.59	78	4.63	87
Nursing personnel	4.48	77	4.53	87
Other hospital and clinical support staff	4.61	78	4.63	87
Medical Students	4.62	77	4.65	87
Professional language, dress and demeanor were exhibited by:				
Faculty	4.76	78	4.69	88
Residents and/or Fellows	4.74	78	4.69	93
Nursing personnel	4.67	80	4.69	87
Other hospital and clinical support staff	4.73	78	4.72	87
Medical Students	4.64	78	4.70	88
Honesty and integrity were always demonstrated by:				
Faculty	4.67	79	4.69	88
Residents and/or Fellows	4.68	79	4.66	87
Nursing personnel	4.54	81	4.66	86
Other hospital and clinical support staff	4.64	80	4.69	87
Medical Students	4.66	79	4.57	88
I felt that an atmosphere conducive to learning was promoted by:				
Faculty	4.52	80	4.61	88
Residents and/or Fellows	4.52	79	4.60	87
Nursing personnel	4.26	80	4.39	87
Other hospital and clinical support staff	4.48	79	4.53	87
Medical Students	4.67	80	4.67	88
I felt that the development and understanding of my responsibilities as a medical professional were promoted by:				
Faculty	4.54	79	4.57	88
Residents and/or Fellows	4.53	79	4.55	87
Nursing personnel	4.29	82	4.44	83
Other hospital and clinical support staff	4.53	79	4.49	87
Medical Students	4.62	79	4.64	88
I am aware of the COM's student mistreatment policies and reporting mechanisms:				
	4.44	81	4.46	88
I am satisfied with COM's student mistreatment policies reporting mechanisms:				
	4.19	87	4.38	87

Academic Affiliation Activities

- Support for resident board review course and ITE costs
- Faculty assuming leadership roles at TH
 - Dr. Geehan Suleyman, IP&C Director
 - Dr. Imran Ali, Epilepsy & Neurophysiology Director
 - Dr. Juan Jaume, Endocrinology Section Head
- Successful recruitment of new Chairs and other faculty

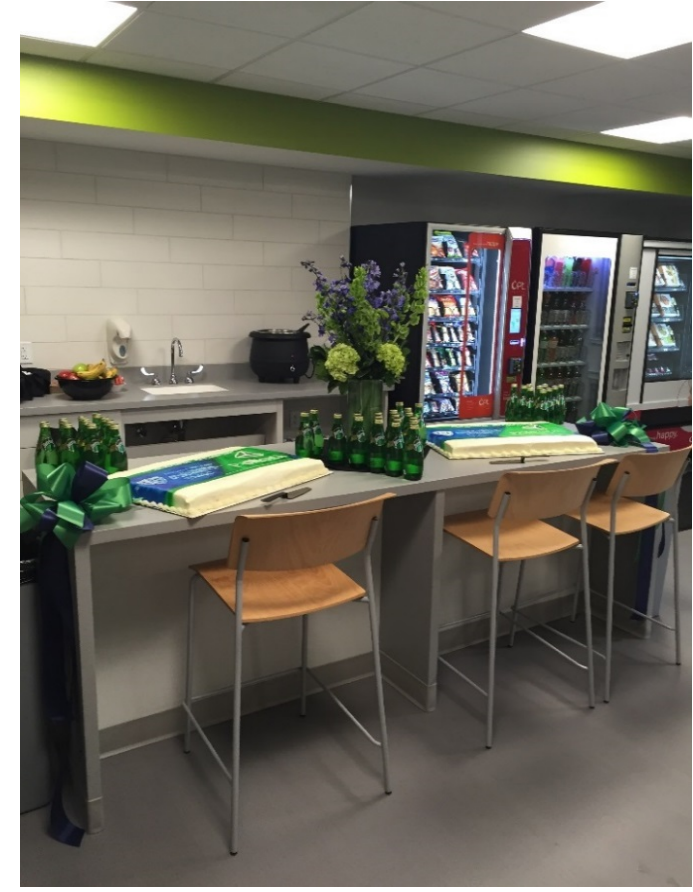
Academic Affiliation Activities

- Neuroscience Center opening
 - enhancing education, research and patient care in an interdisciplinary setting
- Completion of conference center and administrative office space renovations at TH

Neurosciences Center



Academic Conference Center Space- TH



Academic Affiliation- What's Ahead

- Implementation of a Master Research Agreement
- Implementation of a Philanthropy Agreement
- Master space planning

Academic Affiliation- What's Ahead

- Continued work on physician integration models
- Continued student/resident transition as appropriate with monitoring of learning environment
- ProMedica metro medical staff bylaws revision
- AMC planning for Generations Tower opening AY 19-20

Generations Tower

