

MESSAGE FROM THE VICE DEAN



Imran Ali, M.D.

Dear Medical Students,

On behalf of the College of Medicine and Department of Medical Education I would like to convey my best wishes for a joyous holiday season and a very happy new year!

As we begin our new calendar year we need to start planning for new academic initiatives. The meeting with a group of M2 students as well as a separate meeting with M3 students has provided us with valuable feedback for our curriculum and possible avenues for enhancing our curriculum. We are truly appreciative of the thoughtful feedback and insight provided by both groups of students. Our goal is to provide all students

with the best possible medical and professional education and with that in the forefront, we are planning to keep engaged with the students through monthly focus groups to develop a greater understanding of the potential issues facing the students and their possible solutions. We have added additional students to the curriculum committees and plan to address all of the concerns to the best of our ability.

Our faculty and I are always available for any queries or questions you may have, so feel free to reach out to us at any time.

Look forward to seeing you all after the break. Happy Holidays!

NBME PRACTICE EXAMS FOR M2'S



Jeremy Laukka, Ph.D.

Working with Dr. Andy Beavis and the faculty in Organ Systems, the Department of Medical Education will provide a practice NBME exam for the M2 class that will be *customized* to focus on content that you have learned to date. Although we are in the process of planning, the tentative date is Tuesday March 13, 2018. In January, we will provide an update on the date for the second practice exam that will follow Organ Systems in April.

CURRICULUM COMMITTEE STUDENT REPS

Foundational Sciences Curriculum Committee

- M1 Danielle Saevig and Vinaya Gogineni
- M2 Lucien McBeth

Clinical Curriculum Committee

- M1 Vinaya Gogineni
- M2 Margaret Reilly
- M3 Samuel Ivan
- M4 Evan Rotar

Executive Curriculum Committee

- M1 Daniel Lubarsky and Danielle Saevig
- M2 Nick Cairl and Alex Wisniewski
- M3 Darren Gordon
- M4 Sophie Cannon

Curriculum Evaluation Committee

- M3 Megan Crippen and Richard Voigt

If you are an M3 or M4 and are interested in representing your class on the Foundational Sciences Curriculum Committee or an M1, M2, or M4 and are interested in representing your class on the Curriculum Evaluation Committee, please contact Melissa Hansen at 419-383-4458 or by e-mail at melissa.hansen@utoledo.edu.



GREAT JOB!

ProMedica Toledo Hospital participates in a Hand Hygiene auditing program sponsored by OHA in which a "secret shopper" completes random monthly hand hygiene audits on the various clinical areas throughout the campus.

During the month of November medical students and residents were 100% compliant with hand hygiene!

Keep up the great work!



In the Spotlight



Stefanie Bias

Stefanie Bias is an **Administrative Assistant** in the Department of Medical Education, College of Medicine and Life Sciences. In this position, Stefanie provides administrative assistance for Dr. Jeremy Laukka, Assistant Dean for Foundational Sciences, as well as other department faculty.

Stefanie has worked for the University of Toledo for six years. Prior to her position in the DME, she served as a secretary for the department of Neurosciences and was a Cardiology Fellowship Coordinator. Her experience as a coordinator has given her the understanding of what's involved with residency and fellowship from interviews to graduation.

Please feel free to contact Stefanie for any of your Foundational Science needs and queries at 419-383-6454, or by e-mail at stefanie.bias@utoledo.edu.

FINANCIAL AID NEWS



Jason Titus

The end of fall semester is rapidly approaching, and before we head into 2018, there are a few financial aid items I would like to mention.

1. The College of Medicine Continuing Student Scholarship Application is now open. You can access the application [here](#). The deadline to submit your application is March 15, 2018.
2. If you have not already done so, please complete your 2018-2019 FAFSA: <https://fafsa.ed.gov/>. The 18/19 FAFSA is required for the continuing student scholarship application.
3. As always, financial aid disbursements occur on the official start date of the semester, unless you are enrolled in non-aid eligible hours to start the term, such as FLEX. For spring semester, the disbursement dates are as follows:

- M1: January 3
- M2: January 3
- M3: February 5
- M4: January 2



As a reminder, the Financial Aid Office will be closed from Monday, December 25 to Monday, January 1, and will reopen on Tuesday, January 2.

Please remember that I am here as a resource for you. Whether you have a question about financial aid, debt management, loan repayment strategies, or any other financial related topic, I am here to help, so please do not hesitate to reach out. Feel free to call, email, or stop by my office in the Student Service Center.

I wish all of you a safe and enjoyable holiday season!

OCCUPATIONAL EXPOSURE FLOW CHART

The flow chart on the following page is for the exposure process, please note that this includes needle sticks, body fluid and contaminated sharps. For any exposure individuals should report to the Emergency Department.

Below is the CDC link regarding Occupational Safety and Health, there is valuable information in this link to help answer many questions regarding prevention of needle sticks as well as the management and treatment guidelines.

<https://www.cdc.gov/niosh/topics/bbp/emergnedl.html>

Exposures elsewhere should follow specific organization protocol and report the incident to our employee health at ext. 5598 to ensure follow-up. Following the report, they will complete follow-up with the student.



STUDENT MENTAL HEALTH SERVICES

Students have access to mental health and counseling services at Kobacker Center on the Health Science Campus. Additional counseling services are available at the University Counseling Center on Main Campus as well. To make an appointment, please call 419.383.3815

Health Science Campus

Behavioral Health Services
Amy Riese, M.D.
Sandra McCluskey, LPCC-S
Kobacker Center
1400 East Medical Loop
419.383.3815



Main Campus

University Counselling Center
Rocket Hall, room 1810
419.530.2426

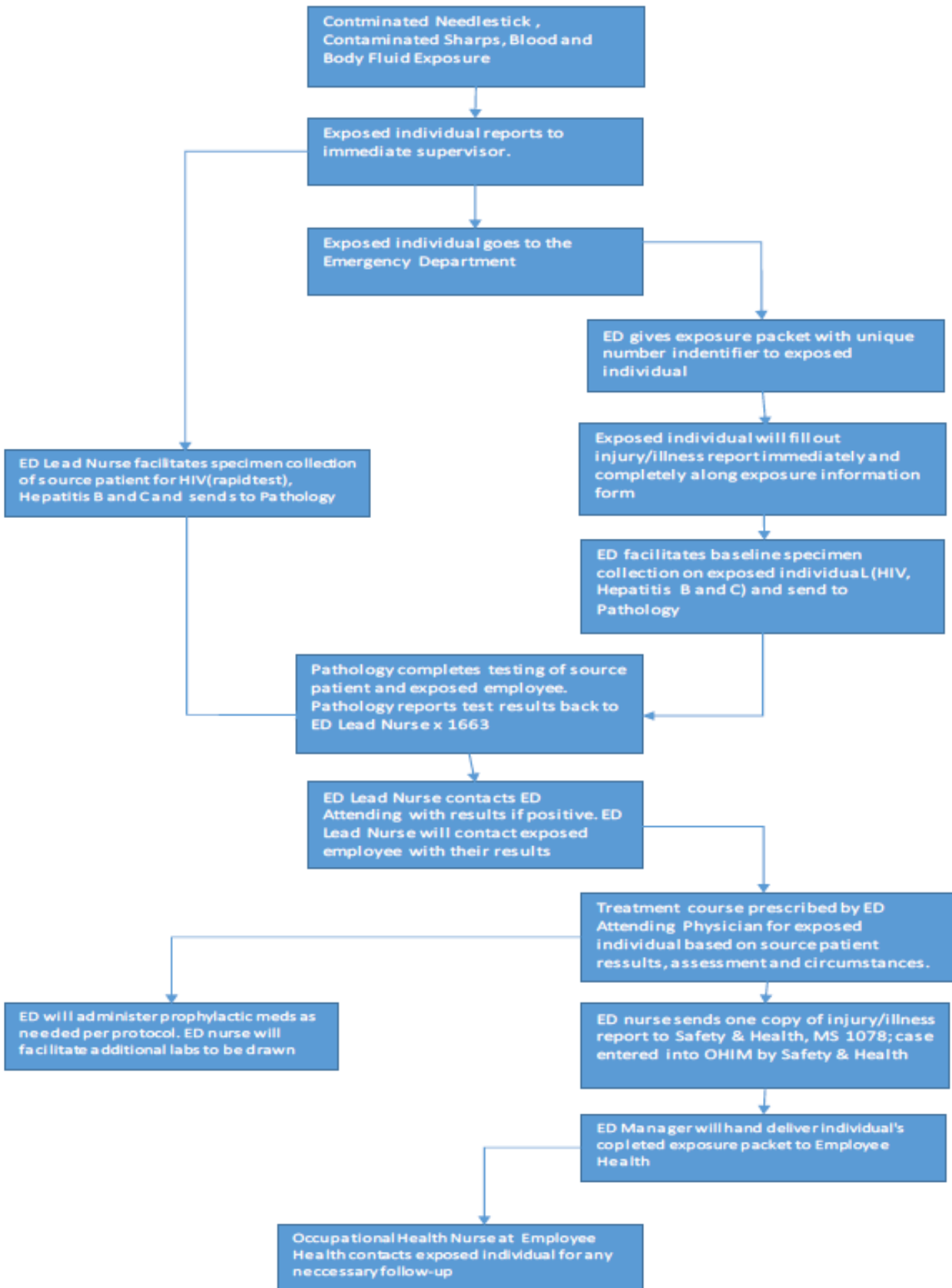
STUDENT WELLNESS SERVICES

Students have access to wellness services at the Ruppert Health Center on the Health Science Campus. Services include medical visits, travel consults, immunizations and program physicals. To make an appointment, please call 419.383.5000.

Health Science Campus

0013 Ruppert Health Center
419.383.5000

OCCUPATIONAL EXPOSURE FLOW CHART



Exposures elsewhere should follow specific organization protocol and report the incident to our employee health at ext. 5598 to ensure follow-up. Following the report, they will complete follow-up with the student.

Change in Minimum Passing Score for Step 1

Announcement posted to USMLE website December 1, 2017

The recommended Step 1 minimum passing score will change from 192 to 194. This change will affect examinees who take a Step 1 examination that begins on or after **January 1, 2018**.

As stated in the USMLE Bulletin of Information and as explained in a [previous posting](#) to the USMLE website, the minimum passing score for each USMLE Step examination is reviewed periodically and may be adjusted at any time.

At its November 2017 meeting, the USMLE Management Committee conducted a review of the Step 1 examination minimum passing score. During the meeting, the Committee considered information from multiple sources, including:

- ? Recommendations from independent groups of physicians who participated in content-based standard-setting activities in 2017;
- ? Results of surveys of various groups (e.g., state licensing representatives, medical school faculty, examinees) concerning the appropriateness of current passing requirements for the Step 1 examination;
- ? Data on trends in examinee performance;
- ? Data on precision of pass/fail classifications.

As a result of its review, the USMLE Management Committee decided to raise the recommended Step 1 minimum passing score from 192 to 194.

As noted above, this change will apply to Step 1 examinees who take a Step 1 examination that begins on or after **January 1, 2018**.

Medical School Services | National Board of Medical Examiners

Send questions or comments to medicalschoolservices@nbme.org