

Direct Insulin and Leptin Action on Pro-opiomelanocortin Neurons Is Required for Normal Glucose Homeostasis and Fertility

Jennifer W. Hill,^{1,2} Carol F. Elias,² Makoto Fukuda,² Kevin W. Williams,² Eric D. Berglund,² William L. Holland,³ You-Ree Cho,³ Jen-Chieh Chuang,² Yong Xu,² Michelle Choi,² Danielle Lauzon,² Charlotte E. Lee,² Roberto Coppari,² James A. Richardson,⁵ Jeffrey M. Zigman,² Streamson Chua,⁶ Philipp E. Scherer,³ Bradford B. Lowell,^{7,9} Jens C. Brüning,^{8,9} and Joel K. Elmquist^{2,4,9,*}

¹Center for Diabetes and Endocrine Research, Department of Physiology and Pharmacology, College of Medicine, The University of Toledo, Toledo, OH 43614, USA

²Division of Hypothalamic Research

³Touchstone Diabetes Center

⁴Department of Pharmacology

Department of Internal Medicine, University of Texas Southwestern Medical Center, Dallas, TX 75390, USA

⁵Department of Pathology, University of Texas Southwestern Medical School, Dallas, TX 75390, USA

⁶Department of Medicine, Albert Einstein College of Medicine, Bronx, NY 10461, USA

⁷Division of Endocrinology, Department of Medicine, Beth Israel Deaconess Medical Center, Boston, MA 02215, USA

⁸Institute for Genetics, Center for Molecular Medicine Cologne (CMMC) and Cologne Excellence Cluster for Cellular Stress Responses in Aging Associated Diseases (CECAD), University of Cologne, Zùlpicher Str. 47, D-50674 Cologne, Germany

⁹These authors contributed equally to this work

*Correspondence: joel.elmquist@utsouthwestern.edu

DOI 10.1016/j.cmet.2010.03.002

SUMMARY

Circulating leptin and insulin convey information regarding energy stores to the central nervous system, particularly the hypothalamus. Hypothalamic pro-opiomelanocortin (POMC) neurons regulate energy balance and glucose homeostasis and express leptin and insulin receptors. However, the physiological significance of concomitant leptin and insulin action on POMC neurons remains to be established. Here, we show that mice lacking both leptin and insulin receptors in POMC neurons (*Pomc-Cre, Lep^{fllox/fllox} IR^{fllox/fllox}* mice) display systemic insulin resistance, which is distinct from the single deletion of either receptor. In addition, *Pomc-Cre, Lep^{fllox/fllox} IR^{fllox/fllox}* female mice display elevated serum testosterone levels and ovarian abnormalities, resulting in reduced fertility. We conclude that direct action of insulin and leptin on POMC neurons is required to maintain normal glucose homeostasis and reproductive function.

INTRODUCTION

Identifying mechanisms linking obesity and insulin resistance is crucial for understanding type 2 diabetes. Changing levels of circulating insulin and leptin inform the CNS regarding energy stores. Thus, brain-specific disruption of the insulin receptor (IR) causes mild obesity, hyperleptinemia, and insulin resistance (Brüning et al., 2000). Hypothalamic insulin signaling also influences hepatic glucose production (HGP), and its blockade is

implicated in diabetes (Gelling et al., 2006; Inoue et al., 2006; Obici et al., 2002). Likewise, leptin action in the hypothalamus is required to maintain both normal body weight and insulin sensitivity (Balthasar et al., 2004; Coppari et al., 2005; Dhillon et al., 2006; Morton et al., 2003, 2005; van de Wall et al., 2008). Indeed, leptin and insulin can engage similar hypothalamic intracellular signaling pathways (Carvalho et al., 2005; Mirshamsi et al., 2004; Niswender et al., 2001, 2003).

Within the hypothalamus, POMC neurons are critical regulators of energy balance and glucose homeostasis (Baskin et al., 1999; Benoit et al., 2002; Cheung et al., 1997; Elmquist et al., 1998; Porte et al., 2002). Deletion of SOCS-3, a negative regulator of the actions of leptin, insulin, and various cytokines in POMC neurons, results in modest changes in body weight, but substantially improved glucose homeostasis and insulin sensitivity as well as resistance to dietary obesity (Kievit et al., 2006). However, deletion of leptin receptors (LepRs) alone in POMC neurons causes mild obesity (Balthasar et al., 2004) and reportedly induces no (Balthasar et al., 2004) or mild effects on glucose homeostasis in males only (Shi et al., 2008). In addition, deletion of POMC IRs results in no discernable impact on body weight or glucose regulation (Könner et al., 2007).

These results call into question the physiological importance of direct leptin and insulin action on POMC neurons for modulating glucose homeostasis. Recent work from our laboratory has shown that leptin and insulin induce changes in membrane potential in disparate subgroups of arcuate nucleus (ARC) POMC cells (Williams et al., 2010). Thus, we hypothesized that previous studies deleting one receptor type from a subgroup of POMC neurons failed to eliminate the collective POMC neuronal regulation of glucose levels maintained by the other adiposity signal. To this end, we characterized mice lacking both IRs and LepRs specifically in POMC neurons (*Pomc-Cre, Lep^{fllox/fllox} IR^{fllox/fllox}* mice).

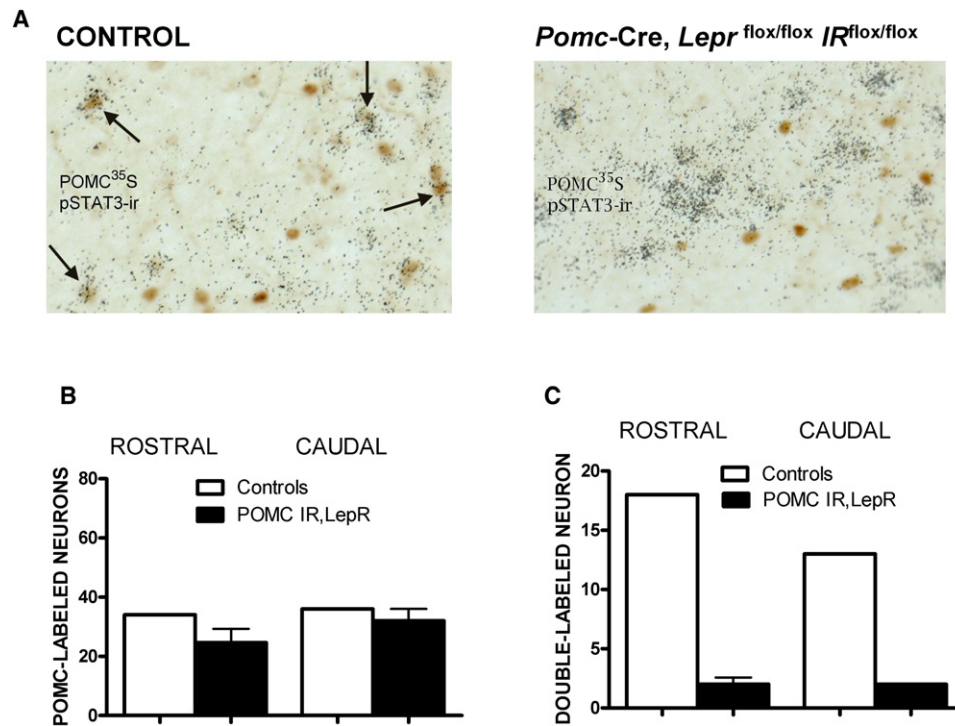


Figure 1. POMC Neurons in *Pomc-Cre, Lepr^{flox/flox} IR^{flox/flox}* Mice No Longer Respond to Leptin

(A) Leptin was administered i.p. (10 μ g), and animals were perfused.

(B and C) POMC ³⁵S-labeled neurons (B) and STAT3 phosphorylation colocalized with POMC ³⁵S-labeled neurons (C) were quantified in the rostral and caudal ARC (Paxinos levels 43 and 47) in littermate controls (white bars) and *Pomc-Cre, Lepr^{flox/flox} IR^{flox/flox}* mice (black bars). Values are presented as means \pm SEM. See also Figure S1.

RESULTS

We crossed mice lacking LepRs in POMC cells (*Pomc-Cre, Lepr^{flox/flox}* mice) (Balthasar et al., 2004) with mice carrying a loxP-modified IR allele (*IR^{flox/flox}*) (Könner et al., 2007) to create *Pomc-Cre, Lepr^{flox/flox} IR^{flox/flox}* mice. These mice lack IRs and LepRs in POMC-expressing cells in the hypothalamus and pituitary, but retain them in other cell types and tissues, such as liver and ovary (Figures S1A–S1D). POMC-expressing neurons are found in brainstem, although many (Coppari et al., 2005; Huo et al., 2006; Morton et al., 2003, 2005; Perello et al., 2007), but not all (Ellacott et al., 2006), reports suggest that action in the hypothalamus underlies leptin's role in energy balance and glucose regulation. However, it should be noted that we cannot rule out a potential role of NTS (nucleus of the solitary tract) neurons in these studies.

In mice lacking both LepRs and IRs in POMC neurons, hypothalamic POMC neuronal distribution resembled controls (Figure 1B). As expected, leptin-induced phosphorylation of STAT3 was absent in POMC neurons of *Pomc-Cre, Lepr^{flox/flox} IR^{flox/flox}* mice (Figures 1A and 1C). We also used our new insulin signaling reporter mouse to examine the effect of the targeted deletions on FoxO1a translocation (Fukuda et al., 2008). Despite administration of a pharmacological dose of insulin to hypothalamic slices, nuclear exclusion of FoxO1a was absent in POMC neurons of double knockout mice (Figures 2A and 2B). Since POMC is also expressed in the corticotropes in the anterior pitu-

itary gland and glucocorticoids can cause glucose intolerance and insulin resistance (Jacobson et al., 2005; Zinker et al., 2007), we assessed corticosterone levels under baseline conditions and with a moderately stressful social challenge. We found that corticosterone levels of *Pomc-Cre, Lepr^{flox/flox} IR^{flox/flox}* mice were similar to controls (Table 1), indicating that these mice are not hypersensitive to stress.

Previous reports suggest that leptin activates POMC neurons while insulin inhibits POMC neuronal activity (Choudhury et al., 2005; Claret et al., 2007; Cowley et al., 2001; Hill et al., 2008b; Plum et al., 2006). Thus, we examined the acute effects of leptin and insulin in POMC neurons from *Pomc-Cre, Lepr^{flox/flox} IR^{flox/flox}* mice carrying a floxed Rosa-GFP allele and POMC-GFP control mice using whole-cell patch-clamp electrophysiology. Similar to previous reports, leptin (100 nM) superfusion resulted in a depolarization in 5 of 8 POMC neurons from POMC-GFP mice (6.6 ± 0.4 mV; resting membrane potential = -45.4 ± 1.9 mV; $n = 5$) (Figures 2C and 2E). Likewise, some POMC neurons from POMC-GFP mice hyperpolarized in response to 50 nM insulin (5 of 10 POMC neurons; -6.6 ± 1.4 mV; resting membrane potential = -44.2 ± 2.8 mV; $n = 5$) (Figures 2C and 2E). However, POMC neurons from *Pomc-Cre, Lepr^{flox/flox} IR^{flox/flox}* mice failed to respond to either leptin (0.1 ± 0.3 mV; $n = 10$) (Figures 2D and 2E) or insulin (-0.4 ± 0.2 mV; $n = 11$) (Figures 2D and 2E). The resting membrane potential, average input resistance, and whole-cell capacitance of POMC neurons from *Pomc-Cre, Lepr^{flox/flox} IR^{flox/flox}* mice were statistically

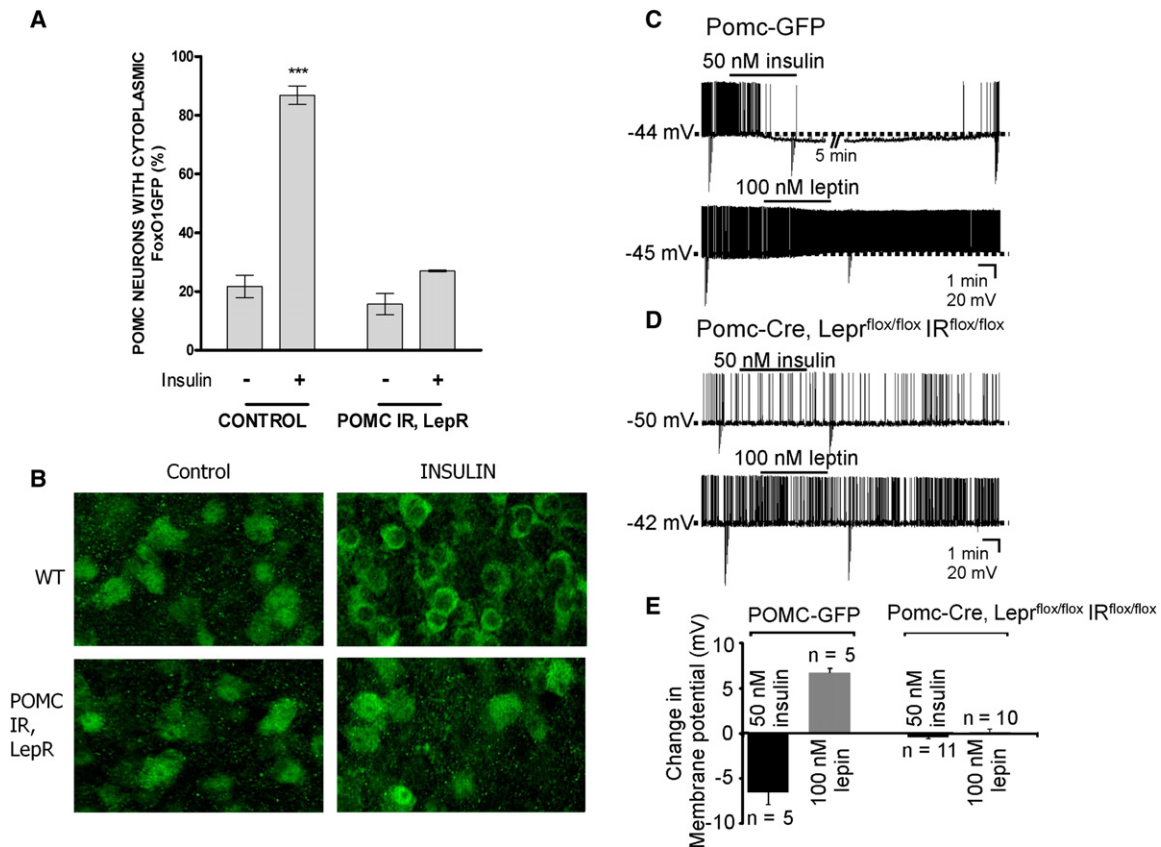


Figure 2. POMC Neurons in *Pomc-Cre, LepR^{flox/flox} IR^{flox/flox}* Mice Do Not Respond to Insulin

(A) The percentage of neurons with cytoplasmic FoxO1GFP.

(B) Hypothalamic organotypic slices from FoxO1GFP-POMC reporter mice were treated with insulin (100 nM for 30 min) or vehicle, compared with slices from *Pomc-Cre, LepR^{flox/flox} IR^{flox/flox}* mice carrying the FoxO1GFP reporter, and subjected to anti-GFP immunohistochemistry. Scale bar, 20 μ m.

(C) Current-clamp recordings at resting membrane potential depicting an insulin-induced hyperpolarization and a leptin-induced depolarization in separate POMC neurons from POMC-GFP mice. Downward deflections are responses to rectangular current steps.

(D) Current-clamp recordings show insulin and leptin fail to influence the membrane potential of POMC neurons in *Pomc-Cre, LepR^{flox/flox} IR^{flox/flox}* mice.

(E) Histogram of insulin- and leptin-induced responses in identified POMC neurons from POMC-GFP and *Pomc-Cre, LepR^{flox/flox} IR^{flox/flox}* mice. Values are means \pm SEM. *** $p < 0.001$, compared by two-way ANOVA followed by Bonferroni post hoc. See also Figure S2.

similar to POMC-GFP neurons (Figure S2). These data suggest POMC neurons from *Pomc-Cre, LepR^{flox/flox} IR^{flox/flox}* mice have similar cellular properties to POMC neurons from POMC-GFP mice, but the acute effects of leptin and insulin are disrupted in POMC neurons from *Pomc-Cre, LepR^{flox/flox} IR^{flox/flox}* mice.

Assessment of Energy Homeostasis

We next examined the effect of simultaneous deletion of IRs and LepRs in POMC neurons on energy balance. As previously shown (Könnner et al., 2007), deletion of the IR alone in POMC neurons did not affect body weight (Figure 3A). Deletion of LepRs alone in POMC neurons produced obesity within the first 3 months of age, as we previously reported (Balthasar et al., 2004; Könnner et al., 2007). Interestingly, the additional deletion of IRs in the context of POMC-specific deletion of LepRs ameliorated obesity (Figure 3A). Specifically, males lacking IRs and LepRs in POMC neurons were significantly heavier by 6 months than littermate controls, but weighed significantly less than the single LepR-deleted mice. No change was seen in food intake

by *Pomc-Cre, LepR^{flox/flox} IR^{flox/flox}* mice (Figure 3B). To examine the underlying tissue contribution to the body weight phenotype in *Pomc-Cre, LepR^{flox/flox} IR^{flox/flox}* mice, body composition was assessed using NMR. As previously reported, the deletion of IR alone did not change adipose tissue deposition (Figure 3C). However, at 6 months of age, both male and female *Pomc-Cre, LepR^{flox/flox} IR^{flox/flox}* mice had less body fat than *Pomc-Cre, LepR^{flox/flox}* mice (Figure 3C).

We next examined the source of body weight variation among the mice. As the IR-only deletion had no effect on body weight or fat mass, these mice were not examined further. Deletion of the LepR only from POMC neurons had previously been reported to suppress POMC mRNA expression (Balthasar et al., 2004), and we saw a similar trend (Figure 3D). In addition, we found that the double deletion showed a significant suppression in POMC expression, apparently exacerbating the effect of the single deletion. We then examined the metabolic parameters involved in energy balance. As female mice lacking LepRs only in POMC neurons reportedly exhibit clear decreases in energy

Table 1. Endocrine Profile of *Pomc-Cre, Lepr^{flox/flox} IR^{flox/flox}* Mice

	Littermate Controls	SEM	n	<i>Pomc-Cre, Lepr^{flox/flox} IR^{flox/flox}</i>	SEM	n
Corticosterone (ng/ml): males, basal	158.2	20.83	8	140.5	17.99	6
Corticosterone (ng/ml): males, psychosocial stress	264.2	31.82	13	278.8	16.27	6
Corticosterone (ng/ml): females, basal	166.0	47.09	6	150.4	33.95	6
Corticosterone (mg/ml): females, psychosocial stress	324.0	27.00	6	361.9	43.82	6
FSH (ng/ml): females	6.44	1.029	16	8.29	1.273	12
LH/FSH ratio: females	0.089	0.02	16	0.073	0.02	12
Estradiol (pg/ml): females	13.08	5.842	5	12.14	2.873	7
Prolactin (ng/ml): females	83.4	23.68	5	68.0	17.68	7

Mouse trunk blood was collected from 3-month-old mice and assayed for hormone levels. Serum corticosterone levels were measured by EIA from mice in basal and under conditions of psychosocial stress (Hill et al., 2008b). Blood was collected from female mice on diestrus for assay of LH, FSH by RIA, and prolactin and estradiol levels by EIA kit. Groups were compared by t test. Values are presented as means \pm SEM.

expenditure (Shi et al., 2008), we chose to examine female mice. Both *Pomc-Cre, Lepr^{flox/flox}* and *Pomc-Cre, Lepr^{flox/flox} IR^{flox/flox}* mice showed a significant suppression of oxygen consumption with no alteration in substrate preference (Figures 3E and 3G). While *Pomc-Cre, Lepr^{flox/flox}* mice showed significant suppression of ambulatory activity, *Pomc-Cre, Lepr^{flox/flox} IR^{flox/flox}* activity levels were similar to controls (Figure 3F). Thus, insulin and leptin signaling in POMC neurons may have opposing effects on activity levels, although no causal link has been established between increased activity levels and reduced weight in the double knockout.

Blood Glucose Regulation

We next investigated possible alterations in glucose homeostasis. As previously shown, the single deletion of IRs from POMC neurons did not affect glucose parameters (Figure S3). Male *Pomc-Cre, Lepr^{flox/flox}* mice fed normal chow reportedly exhibit insulin resistance (Shi et al., 2008). We therefore examined *Pomc-Cre, Lepr^{flox/flox}* and *Pomc-Cre, Lepr^{flox/flox} IR^{flox/flox}* mice for evidence of hyperinsulinemia. Basal insulin levels in mice lacking LepRs only in POMC neurons were not significantly above control mouse levels, although they tended to be higher (Figures 4A and 4C). In contrast to either single deletion, the double deletion mice showed significantly increased insulin levels in both males and females. An insulin tolerance test (ITT) in male mice revealed insulin resistance in *Pomc-Cre, Lepr^{flox/flox} IR^{flox/flox}* mice but not *Pomc-Cre, Lepr^{flox/flox}* mice (Figure 4E). In response to a glucose tolerance test (GTT), the double receptor knockout females (but not males) displayed abnormally elevated glucose levels (Figures 4B and 4D). We next isolated islets from the pancreas of the double knockout males to examine pancreatic function. High-glucose treatment induced significantly greater insulin release from islets isolated from *Pomc-Cre, Lepr^{flox/flox} IR^{flox/flox}* mice (Figure 4F), as expected with pancreatic β cell compensation for reduced insulin sensitivity. Our results suggest that deletion of IRs and LepRs in POMC neurons leads to insulin resistance despite increased pancreatic insulin secretion, independent of effects on body weight.

Hyperinsulinemic-euglycemic clamps were then performed in cohorts of female and male *Pomc-Cre, Lepr^{flox/flox} IR^{flox/flox}* mice and *Lepr^{flox/flox} IR^{flox/flox}* mice to assess insulin action. We first examined 2-month-old female mice in which body weight did

not differ between genotypes (data not shown). Basal plasma insulin levels were comparable and similarly elevated during the clamp steady-state period (Figure 5A). Fasted blood glucose levels were elevated in young female *Pomc-Cre, Lepr^{flox/flox} IR^{flox/flox}* mice compared to control mice, but this difference normalized during the clamp (Figure 5B). The glucose infusion rate (GIR) required to clamp euglycemia in young female *Pomc-Cre, Lepr^{flox/flox} IR^{flox/flox}* mice was markedly reduced compared to *Lepr^{flox/flox} IR^{flox/flox}* controls, indicating impaired whole-body insulin action (Figure 5C). Fasting HGP and whole-body glucose disposal rates were also elevated in young female *Pomc-Cre, Lepr^{flox/flox} IR^{flox/flox}* mice (Figures 5D and 5E), consistent with the modest increase in blood glucose. As expected, suppression of HGP in young female control *Lepr^{flox/flox} IR^{flox/flox}* mice was complete (Figure 5D). HGP, in contrast, was not suppressed in young female *Pomc-Cre, Lepr^{flox/flox} IR^{flox/flox}* mice, indicating insulin resistance (Figure 5D). We found no differences in clamp glucose disposal (Figure 5E). In 6-month-old male mice, body weight was greater in *Pomc-Cre, Lepr^{flox/flox} IR^{flox/flox}* mice due to higher total fat mass. Fasted blood glucose was similar between groups (178.6 ± 30.25 mg/dl in controls, 188 ± 41.11 mg/dl in *Pomc-Cre, Lepr^{flox/flox} IR^{flox/flox}*), and target euglycemia was achieved during the clamp steady-state (Figure S4A). The GIR required to clamp blood glucose in older male *Pomc-Cre, Lepr^{flox/flox} IR^{flox/flox}* mice was 80% lower than in *Lepr^{flox/flox} IR^{flox/flox}* controls (Figure S4B). HGP was suppressed by 43% in older male *Lepr^{flox/flox} IR^{flox/flox}* mice, but this effect was absent in *Pomc-Cre, Lepr^{flox/flox} IR^{flox/flox}* mice (Figure S4C). These findings are consistent with the results in young female mice and further demonstrate hepatic insulin resistance. Whole-body glucose disposal was similar between the two groups of older male mice, again suggesting no differences in skeletal muscle glucose uptake (Figure S4D).

Assessments of Reproductive Function

In the course of our studies, we noted that female mice lacking LepRs and IRs in POMC neurons had difficulty producing offspring. Thus, we examined their fertility by mating them with control male mice that had previously sired pups. We saw a significant difference in the average number of pups born to littermate controls versus *Pomc-Cre, Lepr^{flox/flox} IR^{flox/flox}* females older than 4 months of age (Figure 6A). This phenotype

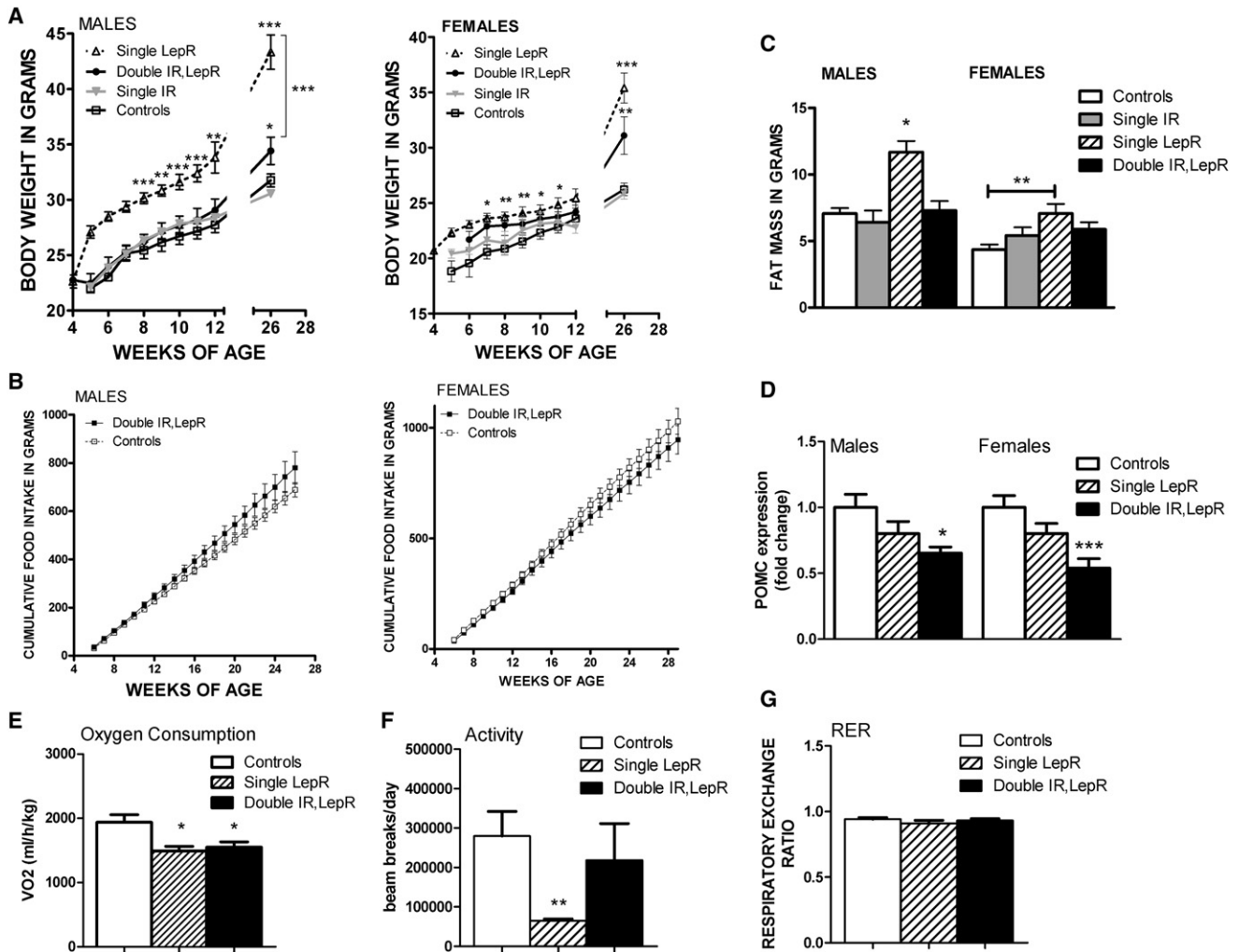


Figure 3. Altered Metabolism and POMC Expression in *Pomc-Cre, LepR^{flox/flox} IR^{flox/flox}* Mice

(A) Body-weight curves of male *LepR^{flox/flox} IR^{flox/flox}* (open squares, n = 12), *Pomc-Cre, IR^{flox/flox}* (filled gray triangles, n = 16), *Pomc-Cre, LepR^{flox/flox}* (open black triangles and dashed line, n = 8), and *Pomc-Cre, LepR^{flox/flox} IR^{flox/flox}* mice (filled black circles, n = 9) and body-weight curves of female *LepR^{flox/flox} IR^{flox/flox}* (open squares, n = 10), *Pomc-Cre, IR^{flox/flox}* (filled gray triangles, n = 18), *Pomc-Cre, LepR^{flox/flox}* (open black triangles and dashed line, n = 8), and *Pomc-Cre, LepR^{flox/flox} IR^{flox/flox}* mice (filled black circles, n = 8) on standard chow.

(B) Cumulative food intake in male and female *LepR^{flox/flox} IR^{flox/flox}* mice (filled dark-gray squares, n = 13, 13) and *Pomc-Cre, LepR^{flox/flox} IR^{flox/flox}* mice (open light-gray circles, n = 9, 10) over time.

(C) Fat mass in a separate cohort of 6-month-old *LepR^{flox/flox} IR^{flox/flox}* (white bars), *Pomc-Cre, IR^{flox/flox}* (gray bars), *Pomc-Cre, LepR^{flox/flox}* (striped bars), and *Pomc-Cre, LepR^{flox/flox} IR^{flox/flox}* mice (black bars) as measured by NMR (n = 7–15 per group). ANOVA: p < 0.0001 males, p = 0.0124 females.

(D) Relative expression of POMC as measured by quantitative PCR in *LepR^{flox/flox} IR^{flox/flox}* (white bars, n = 14–18), *LepR^{flox/flox}*, *Pomc-Cre* (striped bars, n = 7–9), and *LepR^{flox/flox} IR^{flox/flox} Pomc-Cre* (black bars, n = 7–8) mouse hypothalami.

(E–G) O₂ consumption (E), ambulatory activity (F), and respiratory exchange rate (G) in 3-month-old female mice lacking IRs and LepRs in POMC neurons (black bars, n = 9), those lacking only LepRs (striped bars, n = 7), and littermate controls (white bars, n = 8). Values throughout figure are means ± SEM. For entire figure, *p < 0.05, **p < 0.01, and ***p < 0.0001, determined by Bonferroni's Multiple Comparison Test following one-way ANOVA for each group or time point.

was not seen in *Pomc-Cre, IR^{flox/flox}* or *Pomc-Cre, LepR^{flox/flox}* mice, although *Pomc-Cre, LepR^{flox/flox}* mice showed a trend toward reduced litter sizes at 6–8 months of age. In addition, the percentage of matings not resulting in a litter after 2 months was higher for *Pomc-Cre, LepR^{flox/flox} IR^{flox/flox}* females across all maternal ages (Figure 6B). No pups born to *Pomc-Cre, LepR^{flox/flox} IR^{flox/flox}* dams died after birth (data not shown), arguing against a lactational deficiency in the knockouts. Monitoring of cycle stages by assessing vaginal cytology revealed

a lengthened estrus period in older *Pomc-Cre, LepR^{flox/flox} IR^{flox/flox}* females (Figure 6C). These reproductive deficits did not result from abnormal prolactin or estrogen levels (Table 1). In addition, hypothalamic gonadotropin-releasing hormone (GnRH) expression levels were comparable among the groups (Figure 6E). Finally, luteinizing hormone (LH) levels were significantly increased in the *Pomc-Cre, LepR^{flox/flox} IR^{flox/flox}* females (Figure 6D). These results indicate that gonadotroph and GnRH neuronal function is not grossly impaired in these mice.

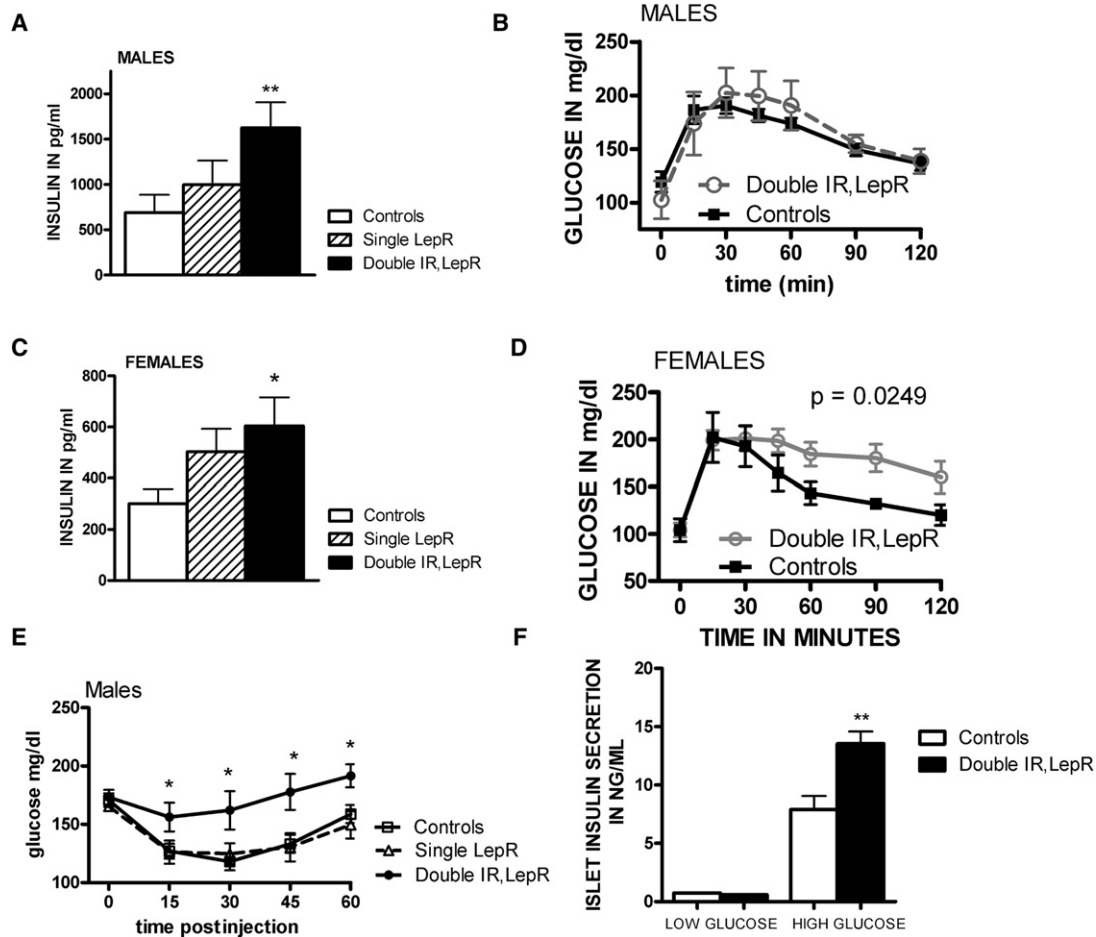


Figure 4. Insulin Resistance in Mice Lacking Both IRs and LepRs in POMC Neurons

(A) Serum insulin levels were measured by ELISA following removal of food for 2 hr in 3-month-old male ($n = 14-15$) *Pomc-Cre, Lep^{fllox/fllox} IR^{fllox/fllox}* and Cre-negative littermate controls and analyzed by one-way ANOVA followed by Tukey's post hoc test.
 (B) Adult male *Pomc-Cre, Lep^{fllox/fllox} IR^{fllox/fllox}* and littermates lacking *Pomc-Cre* ($n = 7-8$) were matched by weight and subjected to a GTT (1 mg/kg).
 (C) Serum insulin levels were measured by ELISA following removal of food for 2 hr in 3-month-old female ($n = 7-21$) *Pomc-Cre, Lep^{fllox/fllox} IR^{fllox/fllox}* and Cre-negative littermate controls and analyzed by one-way ANOVA followed by Tukey's post hoc test.
 (D) Adult female *Pomc-Cre, Lep^{fllox/fllox} IR^{fllox/fllox}* and littermates lacking *Pomc-Cre* ($n = 7-8$) were matched by weight and subjected to a GTT (1 mg/kg).
 (E) Male *Pomc-Cre, Lep^{fllox/fllox} IR^{fllox/fllox}* mice and *Lep^{fllox/fllox} IR^{fllox/fllox}* littermates 3 months of age ($n = 7$) were subjected to an ITT. Blood glucose levels were measured following injection of insulin (0.75 U/kg). Values are presented as means \pm SEM. Statistical significance as shown by p value was determined by comparison of area under the curve, and significant differences at individual time points were evaluated by t test.
 (F) Isolated islets (six islets per well) from 3-month-old male mice were incubated in 5 mM or 17.5 mM glucose for 1 hr, and the secreted insulin in the media was harvested for insulin assay. Values are presented as means \pm SEM. * $p < 0.05$, ** $p < 0.01$. See also Figure S3.

Histological examination of their ovaries showed that double knockout females exhibited more degenerating follicles (Figures 6F and 6G), as well as occasional cysts (data not shown). In addition, we observed significantly elevated serum testosterone levels in *Pomc-Cre, Lep^{fllox/fllox} IR^{fllox/fllox}* females (Figure 6H). This rise was accompanied by a significant elevation in the expression of ovarian enzyme 3 β -HSD I (Figure 6I), which produces androstenedione, the precursor of testosterone. Interestingly, 3 β -HSD I has been found to be upregulated in models of polycystic ovarian syndrome (PCOS) (Zurvarra et al., 2009), and its human ortholog 3 β -HSD II is upregulated in theca cells from patients with PCOS (Nelson et al., 2001). The gene encoding the enzyme upstream of 3 β -HSD in the testosterone synthesis pathway, CYP17, showed a trend toward increased expression

as well (controls: 1.000 ± 0.3606 $N = 10$ versus double knockout: 2.412 ± 0.5784 $N = 10$, $p = 0.0530$). Notably, insulin drives transcriptional activity of the CYP17 gene in primary cultures of theca cells (Zhang and Veldhuis, 2004) and increases 3 β -HSD expression in human granulosa cells (McGee et al., 1995). Thus, the reproductive deficits seen in *Pomc-Cre, Lep^{fllox/fllox} IR^{fllox/fllox}* mice may reflect inappropriate regulation of fertility secondary to peripheral insulin resistance and hyperandrogenemia.

DISCUSSION

POMC neurons are critical regulators of energy balance and glucose homeostasis that sense circulating adiposity signals such as insulin and leptin (Baskin et al., 1999; Benoit et al.,

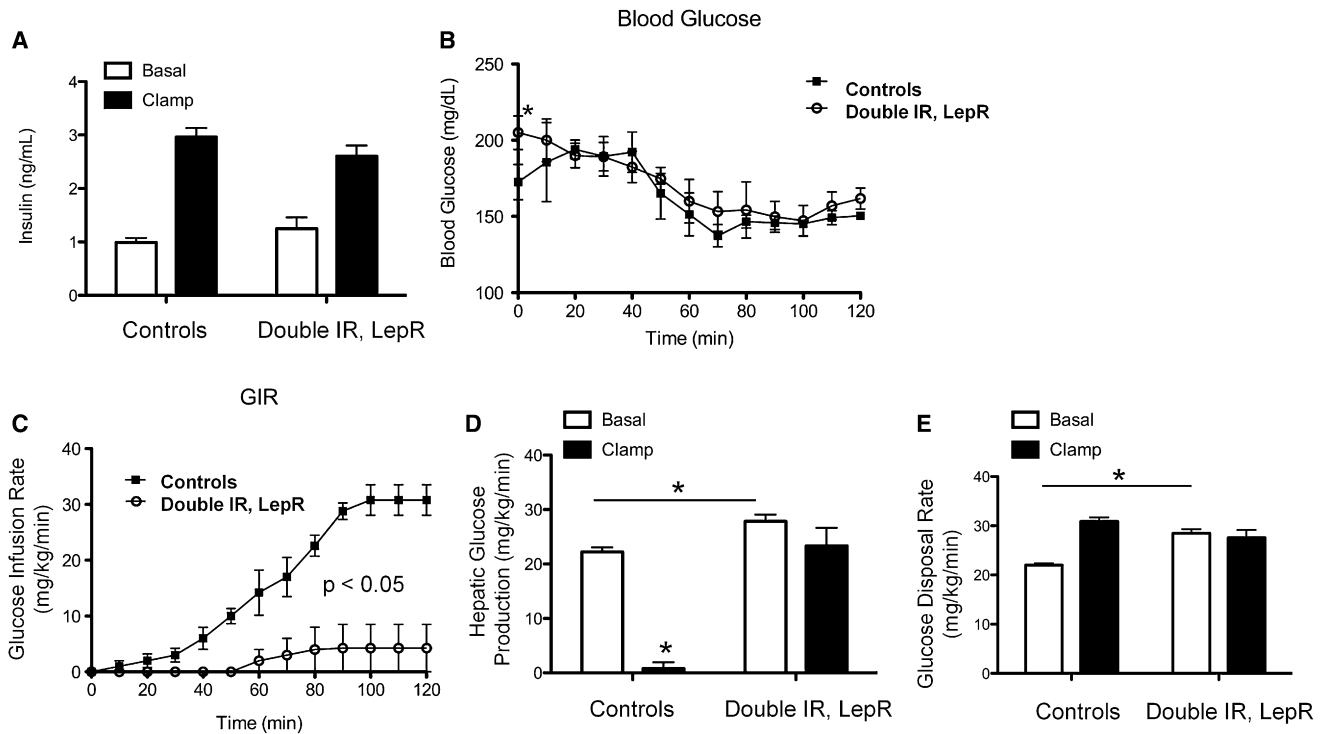


Figure 5. Failure to Suppress Endogenous Glucose Production during Hyperinsulinemic-Euglycemic Clamps

(A–E) Basal and clamp insulin (A), blood glucose (B), glucose infusion rate (GIR) (C), HGP (EndoRa) (D), and glucose disposal rate (Rd) (E) in conscious 2-month-old female *LepR^{fllox/fllox} IR^{fllox/fllox}* (white bars, n = 5) and *Pomc-Cre, LepR^{fllox/fllox} IR^{fllox/fllox}* (black bars, n = 5) mice. Values are presented as means \pm SEM. *p < 0.05. See also Figure S4.

2002; Cheung et al., 1997; Elmquist et al., 1998). Our understanding of insulin and leptin sensing by these neurons is evolving rapidly. Functional LepRs have recently been found on approximately 25%–40% of POMC/CART (cocaine- and amphetamine-regulated transcript) neurons in the mediobasal hypothalamus using electrophysiology and immunohistochemistry (Williams et al., 2010). Similar percentages of POMC neurons display immunoreactive pSTAT3 following leptin treatment (~40%) (Xu et al., 2007). While leptin-induced excitation is seen throughout the retrochiasmatic area (RCA) and ARC, a higher percentage (40%–70%) of leptin-excited POMC cells exist in the lateral RCA and medial ARC (Hill, 2010; Williams et al., 2010). In contrast, insulin-inhibited POMC cells are largely found in the medial RCA and rostromedial areas of the ARC (Williams et al., 2010), as assessed by acute electrophysiological responses. This segregation may not be absolute, since Al-Qassab and colleagues (Al-Qassab et al., 2009) reported electrophysiological recordings of three POMC neurons that showed responsiveness to both leptin and insulin. Interestingly, they reported that the PI3K subunit p110 β was required for the acute effects of insulin and leptin, while the p110 α isoform was required for only the acute effects of insulin. Thus, while different channel distribution is likely to be responsible for the selective responsiveness of POMC neurons to leptin or insulin, the activation of specific signaling cascades may be required as well. It is also possible that some POMC neurons targeted by insulin do not show changes in membrane potential and firing rate, perhaps including leptin-activated POMC neurons in which

insulin exerts long-term genomic responses. Therefore, these recent electrophysiological findings do not exclude the potential for crosstalk between the insulin and leptin signal transduction pathways (Mirshamsi et al., 2004; Niswender et al., 2001, 2003), including parallel PI3K activation and inhibition of FoxO to promote POMC expression (Belgardt et al., 2008; Kitamura et al., 2006). Hence, deletion of both LepRs and IRs may have additional effects on POMC transcription. Nevertheless, our results suggest the existence of functional redundancy of the actions of leptin and insulin on POMC neurons in the context of the control of glucose homeostasis.

These studies have demonstrated that insulin and leptin signaling within POMC neurons do not serve the same function in body-weight regulation. Similar to a previous report (Shi et al., 2008), female mice lacking LepRs from POMC neurons showed increased adiposity accompanied by consistently decreased energy expenditure. We also saw suppression of ambulatory activity levels in these females, while previous reports showed merely a trend toward reduced wheel running. Nevertheless, mouse models with reduced melanocortin system activation, such as MC3r- and MC4r-deficient mice (Butler, 2006; Chen et al., 2000; Ste Marie et al., 2000), show substantially reduced activity. Additionally, restoration of LepRs in POMC neurons rescues the hypoactivity seen in mice lacking LepRs (Huo et al., 2009). In contrast, additional deletion of IRs from POMC neurons decreased body weight and adipose tissue in mice lacking POMC LepRs. These data suggest the anorectic effects of central insulin action (Baskin et al., 1987; Woods et al.,

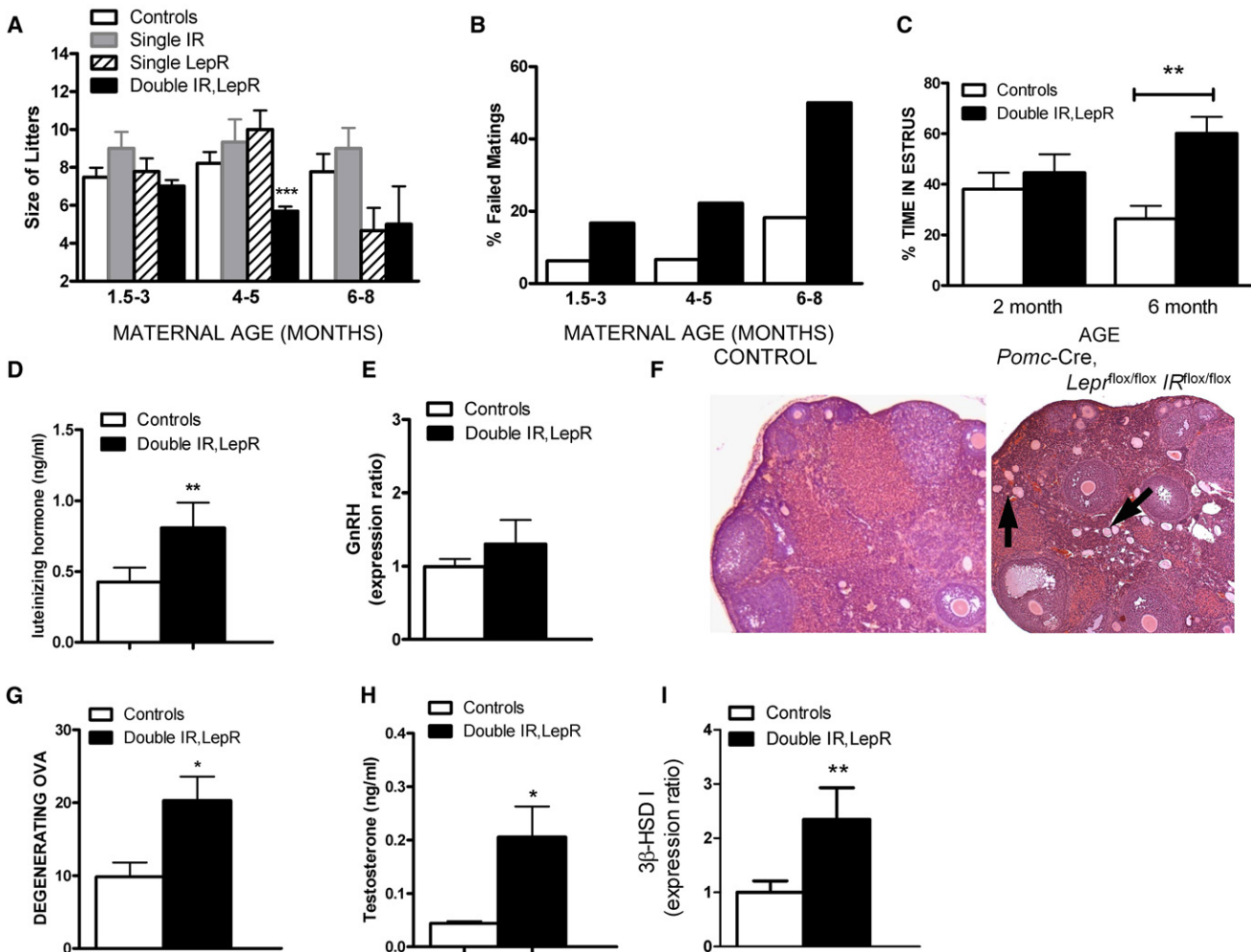


Figure 6. Reduced Fertility in *Pomc-Cre, LepR^{flox/flox} IR^{flox/flox}* Mice

(A) Number of pups born to *LepR^{flox/flox} IR^{flox/flox}* (white bars), *Pomc-Cre, IR^{flox/flox}* (gray bars), *Pomc-Cre, LepR^{flox/flox}* (striped bars), and *Pomc-Cre, LepR^{flox/flox} IR^{flox/flox}* dams (black bars) that were 1.5–3 months of age (n = 7–29), 4–5 months of age (n = 7–14), or 6–8 months of age (n = 7–9).

(B) Percentage of *LepR^{flox/flox} IR^{flox/flox}* (white bars) and *Pomc-Cre, LepR^{flox/flox} IR^{flox/flox}* dams (black bars) caged with control males that failed to produce a litter in 2 months.

(C) *Pomc-Cre, LepR^{flox/flox} IR^{flox/flox}* mice (black bars, n = 7) and littermate controls (*LepR^{flox/flox} IR^{flox/flox}*; white bars, n = 7) were examined daily for 3 weeks for estrus length via vaginal cytology. Smears showing predominantly cornified cells were considered estrus-like. Data were analyzed by t test.

(D) Blood was collected from female mice on diestrus as determined by vaginal cytology for assay of luteinizing hormone levels by RIA. Groups were compared by t test (n = 15, 20).

(E) Relative expression of GnRH as measured by quantitative PCR in *LepR^{flox/flox} IR^{flox/flox}* (white bars, n = 7) and *LepR^{flox/flox} IR^{flox/flox} Pomc-Cre* (black bars, n = 7) female mouse hypothalami. Values are means ± SEM.

(F and G) Sliced and H&E-stained paraffin-embedded ovarian tissue from *Pomc-Cre, LepR^{flox/flox} IR^{flox/flox}* mice (black bars, n = 10) and littermate controls (*LepR^{flox/flox} IR^{flox/flox}*; white bars, n = 10, 6) was examined for number of degenerating ova.

(H) Blood was collected from female mice on diestrus for assay of testosterone levels by RIA (n = 7).

(I) Relative expression of murine 3β-HSD I as measured by quantitative PCR in *LepR^{flox/flox} IR^{flox/flox}* (white bars, n = 10) and *LepR^{flox/flox} IR^{flox/flox} Pomc-Cre* (black bars, n = 11) female mouse ovaries. Values are presented as means ± SEM. Groups were compared by t test.

1979) are not mediated by POMC neurons. These findings may reflect differing roles of POMC neuronal populations that sense leptin or insulin in the modulation of adiposity. Indeed, we have recently shown that deletion of IRs from the brain in adulthood induces a pronounced loss of white adipose tissue (WAT) with a concomitant increase in circulating triglyceride levels, suggesting a role for central insulin signaling in the prevention of lipodystrophy and the expansion of adipocyte size (Koch et al., 2008).

Our results suggest that these actions may be at least partially mediated by insulin-sensitive POMC neurons. Recent studies argue that WAT expansion serves a protective role in the face of excess energy intake (Gray and Vidal-Puig, 2007; Virtue and Vidal-Puig, 2008). Thus, POMC neuronal populations may promote an adaptive response to a positive energy balance by increasing overall energy expenditure and promoting appropriate fat storage in WAT.

Our results confirm that POMC neurons are an important target for the actions of insulin and leptin in maintaining normal glucose homeostasis. Mice lacking IRs and LepRs in POMC neurons show a marked effect on HGP, no longer responding to high insulin levels to suppress HGP. These findings are in accord with those of German and colleagues (German et al., 2009), who have demonstrated that replacement of LepRs in the ARC nucleus of LepR-deficient rats improved peripheral insulin sensitivity via enhanced suppression of HGP independent of any change in insulin-stimulated glucose uptake or disposal. Interestingly, they could block the effect by selective hepatic vagotomy. Our results suggest that both leptin- and insulin-sensitive subpopulations of POMC neurons play a crucial role in the control of HGP and that insulin as well as leptin action on these POMC neurons can suppress HGP. Indeed, redundancy in such a crucial function as the avoidance of β cell damage from excess glucose production should be anticipated.

Leptin and insulin action in the brain is required for coordinated reproduction (Brüning et al., 2000; Burks et al., 2000; de Luca et al., 2005; Keen-Rhinehart et al., 2005; Kowalski et al., 2001; Okamoto et al., 2004; Salvi et al., 2006), effects believed to be due to the ability of leptin and insulin to indirectly modulate GnRH release (Donato et al., 2009; Hill et al., 2008a; Leshan et al., 2009; Tortoriello et al., 2007). We have not measured GnRH pulse levels across the estrous cycle in *Pomc-Cre, Lep^{fllox/fllox} IR^{fllox/fllox}* mice. However, unlike mice lacking IRs in all neurons (Brüning et al., 2000), diestrus LH levels are elevated in our mice, arguing against a diagnosis of hypothalamic hypogonadism.

Interestingly, our POMC double receptor knockout model recapitulates many characteristics associated with PCOS, including ovarian abnormalities, insulin resistance, and, notably, hyperandrogenism. Hyperinsulinemia may be the primary factor driving increased ovarian androgen production in PCOS patients (Adashi et al., 1981; Barbieri et al., 1986; Dunaif et al., 1990; Geffner et al., 1986; Soldani et al., 1994), though androgen excess in turn may promote further insulin resistance (Corbould, 2008). Mice lacking LepRs and IRs in POMC neurons may display a similar progression, as insulin resistance is detectable in females at 2 months of age and reproductive difficulties do not appear before 4 months. Given the population of lean PCOS patients with hyperinsulinemic androgen excess (Chang et al., 1983; Dunaif et al., 1989, 1992), it is interesting to note that our double deletion mouse is leaner than POMC LepR-only-deleted mice and yet shows reproductive impairment not present in the latter.

In conclusion, our results establish that POMC neurons that respond to insulin and leptin regulate systemic glucose homeostasis via control of HGP and reveal a function for this system in maintaining fertility.

EXPERIMENTAL PROCEDURES

Targeted LepR and IR Deletion and Assessment of Energy Homeostasis

Care of all animals and procedures was approved by the UT Southwestern Medical Center Institutional Animal Care and Use Committees. All genotypes were on a mixed C57BL/6J;129S6/SvEv background. Experimental mice were compared to littermate controls carrying only the floxed alleles (*Lep^{fllox/fllox} IR^{fllox/fllox}* mice) and, in some cases, to mice with a single receptor deletion

(*Pomc-Cre, Lep^{fllox/fllox}* or *Pomc-Cre, IR^{fllox/fllox}* mice). Study animals were derived from crosses between animals that were heterozygous for the floxed LepR and homozygous for the floxed IR and carried the *Pomc-Cre* allele and animals that were homozygous for both floxed receptors. Thus, mice lacking LepRs in POMC-expressing cells were not used during the breeding of experimental animals.

In situ hybridization for POMC (³⁵S) mRNA was performed as described earlier (Elias et al., 1999). Whole-cell patch-clamp recordings from POMC neurons were performed as previously detailed (Cowley et al., 2001; Hill et al., 2008b). Food intake and body weight measurements were made using established protocols. Physical activity, oxygen consumption (VO₂), and RER were monitored using a combined indirect calorimetry system (TSE Systems GmbH; Bad Homburg, Germany) (Pfluger et al., 2008). See Supplemental Experimental Procedures for additional information.

Hormone and Glucose Regulation Assays

Plasma corticosterone levels were obtained between 1400 and 1600 hr following the protocol described by Popova and colleagues (Hill et al., 2008b; Popova et al., 2006). Briefly, psychosocial stress was induced in eight mice of each strain by aggregation for 30 min in groups of four animals after 3 day isolation in individual cages. Blood samples were taken from the trunk in heparin-free tubes after decapitation within 30 s of handling. The corticosterone concentration was measured from serum by EIA (Assay Designs Correlate-EIA Corticosterone kit) according to the manufacturer's instructions. Additional hormone levels were assayed according to established protocols; see Supplemental Experimental Procedures for additional information.

Hyperinsulinemic-euglycemic clamps were performed as previously described (Nawrocki et al., 2006). In all GTTs and ITTs, subsets of age-matched mice with similar body weights were chosen to avoid the confounding influence of body weight on results. Additional details appear in Supplemental Experimental Procedures.

FoxO Translocation Measurements in Hypothalamic Slices

We used a reporter mouse to monitor PI3K-Akt signaling in specific populations of neurons in hypothalamic slice cultures based on FoxO1 nucleocytoplasmic shuttling. The reporter, FoxO1 fused to green fluorescent protein (FoxO1GFP), is expressed under the control of a ubiquitous promoter silenced by a *loxP*-flanked transcriptional blocker. Thus, expression of the reporter in selected cells depends on the action of Cre recombinase. Image pixel intensity, as a measurement of fluorescence intensity, was measured within specific regions of the neuron (cytoplasmic [in the soma] and nuclear) as well as in regions outside the cell (background) with the AxioVision 4.1 software. Neurons positive for cytoplasmic FoxO1GFP were defined as those with an N:C ratio of <1:2. See Supplemental Experimental Procedures for additional details.

Mouse Islet Isolation

All pancreatic islets were obtained from 3-month-old male mice and were harvested in early morning with mice in the fed state. The mouse pancreas was perfused and digested with liberase R1 (Roche; Indianapolis, IN). Islets were then isolated using Ficoll gradient centrifugation and hand selection under a stereomicroscope for transfer to RPMI 1640 medium (11.1 mM glucose) supplemented with 10% (vol/vol) heat-inactivated fetal bovine serum (FBS), 100 IU/ml penicillin, and 100 μ g/ml streptomycin (Invitrogen; Carlsbad, CA), culture conditions routinely used to avoid apoptotic cell death and preserve optimal glucose-stimulated insulin capacity. Three mice were used per group to isolate islets that would be pooled and then distributed evenly among multiple wells (six islets per well) for each assay condition. To determine the effect of glucose, mouse islets were incubated in glucose-free secretion assay buffer for 1 hr and then shifted to 5 mM (low) or 17.5 mM (high) glucose. After 1 hr of incubation, insulin secretion from the islets was measured by EIA (Crystal Chem; Downers Grove, IL). All experiments were performed three times.

Reproductive Phenotyping

Mating success rates were determined by pairing experimental mice with unrelated control mice (known to be fertile) for 2 months or until a litter was produced. Pairs were monitored regularly for signs of visible pregnancy.

Ovaries were removed at autopsy and fixed for 72 hr in 4% paraformaldehyde. The tissues were then embedded in paraffin, cut into 20 μm sections on a sliding microtome, and stained with hematoxylin and eosin. The number of degenerating ova present in representative sections throughout the ovaries was tabulated by a blinded observer for each of the genotypes. Quantitative PCR was performed using established protocols (Bookout and Mangelsdorf, 2003).

Statistics

The data are reported as mean \pm SEM. All statistical analyses were performed using Prism (version 5.0) software. ITTs and GTTs were analyzed by comparing the mean of the area under the curves by t test. Groups of more than two and individual weight-gain time points were analyzed by a Bonferroni post hoc test following a one-way ANOVA. When planned comparisons had been part of the experimental design, a Bonferroni post hoc analysis was used to assess selected pairs of means. t tests were used to compare results between groups of two. $p < 0.05$ was considered statistically significant.

SUPPLEMENTAL INFORMATION

Supplemental Information includes Supplemental Experimental Procedures and four figures and can be found with this article online at [doi:10.1016/j.cmet.2010.03.002](https://doi.org/10.1016/j.cmet.2010.03.002).

ACKNOWLEDGMENTS

The authors gratefully acknowledge Jason Anderson for technical assistance; Aktar Ali, Laura Brule, and Damalie Namponye for Metabolic Phenotyping Core support (supported by NIH grants 1PL1DK081182 and 1UL1RR024923); and S.R. Hammes and R.E. Hammer for interpretive assistance. Ovarian histology was provided by the UTSW Molecular Pathology Core Laboratory and the University of Toledo Advanced Microscopy & Imaging Center Facility (supported by the Cancer Biology Fund of the University of Toledo Foundation). Radioimmunoassays were performed by A.F. Parlow (Harbor-UCLA REI) and Aleisha Schoenfelder (UVA Ligand Assay and Analysis Core; NICHD/NIH [SCCPRI] Grant U54-HD28934). This work was supported by German research foundation (DFG1492-7/1) funding to J.C.B.; American Diabetes Association and a Smith Family Foundation Pinnacle Program Project Award to J.K.E.; and NIH grants 1F32DK066972 and K99HD056491 to J.W.H., PO1 DK56116 to B.B.L. and J.K.E., and R01DK53301 and RL1DK081185 to J.K.E. TL1DK081181 supported E.D.B.

Received: May 5, 2009

Revised: October 30, 2009

Accepted: March 5, 2010

Published: April 6, 2010

REFERENCES

- Adashi, E.Y., Hsueh, A.J., and Yen, S.S. (1981). Insulin enhancement of luteinizing hormone and follicle-stimulating hormone release by cultured pituitary cells. *Endocrinology* *108*, 1441–1449.
- Al-Qassab, H., Smith, M.A., Irvine, E.E., Guillermet-Guibert, J., Claret, M., Choudhury, A.I., Selman, C., Piipari, K., Clements, M., Lingard, S., et al. (2009). Dominant role of the p110beta isoform of PI3K over p110alpha in energy homeostasis regulation by POMC and AgRP neurons. *Cell Metab.* *10*, 343–354.
- Balthasar, N., Coppari, R., McMinn, J., Liu, S.M., Lee, C.E., Tang, V., Kenny, C.D., McGovern, R.A., Chua, S.C., Jr., Elmquist, J.K., and Lowell, B.B. (2004). Leptin receptor signaling in POMC neurons is required for normal body weight homeostasis. *Neuron* *42*, 983–991.
- Barbieri, R.L., Makris, A., Randall, R.W., Daniels, G., Kistner, R.W., and Ryan, K.J. (1986). Insulin stimulates androgen accumulation in incubations of ovarian stroma obtained from women with hyperandrogenism. *J. Clin. Endocrinol. Metab.* *62*, 904–910.
- Baskin, D.G., Figlewicz, D.P., Woods, S.C., Porte, D., Jr., and Dorsa, D.M. (1987). Insulin in the brain. *Annu. Rev. Physiol.* *49*, 335–347.
- Baskin, D.G., Schwartz, M.W., Seeley, R.J., Woods, S.C., Porte, D., Jr., Breininger, J.F., Jonak, Z., Schaefer, J., Krouse, M., Burghardt, C., et al. (1999). Leptin receptor long-form splice-variant protein expression in neuron cell bodies of the brain and co-localization with neuropeptide Y mRNA in the arcuate nucleus. *J. Histochem. Cytochem.* *47*, 353–362.
- Belgardt, B.F., Husch, A., Rother, E., Ernst, M.B., Wunderlich, F.T., Hampel, B., Klöckener, T., Alessi, D., Kloppenburg, P., and Brüning, J.C. (2008). PDK1 deficiency in POMC-expressing cells reveals FOXO1-dependent and -independent pathways in control of energy homeostasis and stress response. *Cell Metab.* *7*, 291–301.
- Benoit, S.C., Air, E.L., Coolen, L.M., Strauss, R., Jackman, A., Clegg, D.J., Seeley, R.J., and Woods, S.C. (2002). The catabolic action of insulin in the brain is mediated by melanocortins. *J. Neurosci.* *22*, 9048–9052.
- Bookout, A.L., and Mangelsdorf, D.J. (2003). Quantitative real-time PCR protocol for analysis of nuclear receptor signaling pathways. *Nucl. Recept. Signal.* *1*, e012.
- Brüning, J.C., Gautam, D., Burks, D.J., Gillette, J., Schubert, M., Orban, P.C., Klein, R., Krone, W., Müller-Wieland, D., and Kahn, C.R. (2000). Role of brain insulin receptor in control of body weight and reproduction. *Science* *289*, 2122–2125.
- Burks, D.J., Font de Mora, J., Schubert, M., Withers, D.J., Myers, M.G., Towery, H.H., Altamuro, S.L., Flint, C.L., and White, M.F. (2000). IRS-2 pathways integrate female reproduction and energy homeostasis. *Nature* *407*, 377–382.
- Butler, A.A. (2006). The melanocortin system and energy balance. *Peptides* *27*, 281–290.
- Carvalho, J.B., Torsoni, M.A., Ueno, M., Amaral, M.E., Araújo, E.P., Velloso, L.A., Gontijo, J.A., and Saad, M.J. (2005). Cross-talk between the insulin and leptin signaling systems in rat hypothalamus. *Obes. Res.* *13*, 48–57.
- Chang, R.J., Nakamura, R.M., Judd, H.L., and Kaplan, S.A. (1983). Insulin resistance in nonobese patients with polycystic ovarian disease. *J. Clin. Endocrinol. Metab.* *57*, 356–359.
- Chen, A.S., Marsh, D.J., Trumbauer, M.E., Frazier, E.G., Guan, X.M., Yu, H., Rosenblum, C.I., Vongs, A., Feng, Y., Cao, L., et al. (2000). Inactivation of the mouse melanocortin-3 receptor results in increased fat mass and reduced lean body mass. *Nat. Genet.* *26*, 97–102.
- Cheung, C.C., Clifton, D.K., and Steiner, R.A. (1997). Proopiomelanocortin neurons are direct targets for leptin in the hypothalamus. *Endocrinology* *138*, 4489–4492.
- Choudhury, A.I., Heffron, H., Smith, M.A., Al-Qassab, H., Xu, A.W., Selman, C., Simmgren, M., Clements, M., Claret, M., Maccoll, G., et al. (2005). The role of insulin receptor substrate 2 in hypothalamic and beta cell function. *J. Clin. Invest.* *115*, 940–950.
- Claret, M., Smith, M.A., Batterham, R.L., Selman, C., Choudhury, A.I., Fryer, L.G., Clements, M., Al-Qassab, H., Heffron, H., Xu, A.W., et al. (2007). AMPK is essential for energy homeostasis regulation and glucose sensing by POMC and AgRP neurons. *J. Clin. Invest.* *117*, 2325–2336.
- Coppari, R., Ichinose, M., Lee, C.E., Pullen, A.E., Kenny, C.D., McGovern, R.A., Tang, V., Liu, S.M., Ludwig, T., Chua, S.C., Jr., et al. (2005). The hypothalamic arcuate nucleus: a key site for mediating leptin's effects on glucose homeostasis and locomotor activity. *Cell Metab.* *1*, 63–72.
- Corbould, A. (2008). Effects of androgens on insulin action in women: is androgen excess a component of female metabolic syndrome? *Diabetes Metab. Res. Rev.* *24*, 520–532.
- Cowley, M.A., Smart, J.L., Rubinstein, M., Cerdán, M.G., Diano, S., Horvath, T.L., Cone, R.D., and Low, M.J. (2001). Leptin activates anorexigenic POMC neurons through a neural network in the arcuate nucleus. *Nature* *411*, 480–484.
- de Luca, C., Kowalski, T.J., Zhang, Y., Elmquist, J.K., Lee, C., Kilimann, M.W., Ludwig, T., Liu, S.-M., and Chua, S.C., Jr. (2005). Complete rescue of obesity, diabetes, and infertility in db/db mice by neuron-specific LEPR-B transgenes. *J. Clin. Invest.* *115*, 3484–3493.
- Dhillon, H., Zigman, J.M., Ye, C., Lee, C.E., McGovern, R.A., Tang, V., Kenny, C.D., Christiansen, L.M., White, R.D., Edelstein, E.A., et al. (2006). Leptin

- directly activates SF1 neurons in the VMH, and this action by leptin is required for normal body-weight homeostasis. *Neuron* 49, 191–203.
- Donato, J., Jr., Silva, R.J., Sita, L.V., Lee, S., Lee, C., Lacchini, S., Bittencourt, J.C., Franci, C.R., Canteras, N.S., and Elias, C.F. (2009). The ventral premammillary nucleus links fasting-induced changes in leptin levels and coordinated luteinizing hormone secretion. *J. Neurosci.* 29, 5240–5250.
- Dunaif, A., Segal, K.R., Futterweit, W., and Dobrjansky, A. (1989). Profound peripheral insulin resistance, independent of obesity, in polycystic ovary syndrome. *Diabetes* 38, 1165–1174.
- Dunaif, A., Green, G., Futterweit, W., and Dobrjansky, A. (1990). Suppression of hyperandrogenism does not improve peripheral or hepatic insulin resistance in the polycystic ovary syndrome. *J. Clin. Endocrinol. Metab.* 70, 699–704.
- Dunaif, A., Segal, K.R., Shelley, D.R., Green, G., Dobrjansky, A., and Licholai, T. (1992). Evidence for distinctive and intrinsic defects in insulin action in polycystic ovary syndrome. *Diabetes* 41, 1257–1266.
- Elias, C.F., Aschkenasi, C., Lee, C., Kelly, J., Ahima, R.S., Bjorbaek, C., Flier, J.S., Saper, C.B., and Elmquist, J.K. (1999). Leptin differentially regulates NPY and POMC neurons projecting to the lateral hypothalamic area. *Neuron* 23, 775–786.
- Ellacott, K.L., Halatchev, I.G., and Cone, R.D. (2006). Characterization of leptin-responsive neurons in the caudal brainstem. *Endocrinology* 147, 3190–3195.
- Elmquist, J.K., Bjorbaek, C., Ahima, R.S., Flier, J.S., and Saper, C.B. (1998). Distributions of leptin receptor mRNA isoforms in the rat brain. *J. Comp. Neurol.* 395, 535–547.
- Fukuda, M., Jones, J.E., Olson, D., Hill, J., Lee, C.E., Gautron, L., Choi, M., Zigman, J.M., Lowell, B.B., and Elmquist, J.K. (2008). Monitoring FoxO1 localization in chemically identified neurons. *J. Neurosci.* 28, 13640–13648.
- Geffner, M.E., Kaplan, S.A., Bersch, N., Golde, D.W., Landaw, E.M., and Chang, R.J. (1986). Persistence of insulin resistance in polycystic ovarian disease after inhibition of ovarian steroid secretion. *Fertil. Steril.* 45, 327–333.
- Gelling, R.W., Morton, G.J., Morrison, C.D., Niswender, K.D., Myers, M.G., Jr., Rhodes, C.J., and Schwartz, M.W. (2006). Insulin action in the brain contributes to glucose lowering during insulin treatment of diabetes. *Cell Metab.* 3, 67–73.
- German, J., Kim, F., Schwartz, G.J., Havel, P.J., Rhodes, C.J., Schwartz, M.W., and Morton, G.J. (2009). Hypothalamic leptin signaling regulates hepatic insulin sensitivity via a neurocircuit involving the vagus nerve. *Endocrinology* 150, 4502–4511.
- Gray, S.L., and Vidal-Puig, A.J. (2007). Adipose tissue expandability in the maintenance of metabolic homeostasis. *Nutr. Rev.* 65, S7–S12.
- Hill, J.W. (2010). Gene Expression and the Control of Food Intake by Hypothalamic POMC/CART Neurons. *Open Neuroendocrinol.* J. 3, 21–27.
- Hill, J.W., Elmquist, J.K., and Elias, C.F. (2008a). Hypothalamic pathways linking energy balance and reproduction. *Am. J. Physiol. Endocrinol. Metab.* 294, E827–E832.
- Hill, J.W., Williams, K.W., Ye, C., Luo, J., Balthasar, N., Coppari, R., Cowley, M.A., Cantley, L.C., Lowell, B.B., and Elmquist, J.K. (2008b). Acute effects of leptin require PI3K signaling in hypothalamic proopiomelanocortin neurons in mice. *J. Clin. Invest.* 118, 1796–1805.
- Huo, L., Grill, H.J., and Bjorbaek, C. (2006). Divergent regulation of proopiomelanocortin neurons by leptin in the nucleus of the solitary tract and in the arcuate hypothalamic nucleus. *Diabetes* 55, 567–573.
- Huo, L., Gamber, K., Greeley, S., Silva, J., Huntoon, N., Leng, X.H., and Bjorbaek, C. (2009). Leptin-dependent control of glucose balance and locomotor activity by POMC neurons. *Cell Metab.* 9, 537–547.
- Inoue, H., Ogawa, W., Asakawa, A., Okamoto, Y., Nishizawa, A., Matsumoto, M., Teshigawara, K., Matsuki, Y., Watanabe, E., Hiramatsu, R., et al. (2006). Role of hepatic STAT3 in brain-insulin action on hepatic glucose production. *Cell Metab.* 3, 267–275.
- Jacobson, P.B., von Geldern, T.W., Ohman, L., Osterland, M., Wang, J., Zinker, B., Wilcox, D., Nguyen, P.T., Mika, A., Fung, S., et al. (2005). Hepatic glucocorticoid receptor antagonism is sufficient to reduce elevated hepatic glucose output and improve glucose control in animal models of type 2 diabetes. *J. Pharmacol. Exp. Ther.* 314, 191–200.
- Keen-Rhinehart, E., Kalra, S.P., and Kalra, P.S. (2005). AAV-mediated leptin receptor installation improves energy balance and the reproductive status of obese female Koletsy rats. *Peptides* 26, 2567–2578.
- Kievit, P., Howard, J.K., Badman, M.K., Balthasar, N., Coppari, R., Mori, H., Lee, C.E., Elmquist, J.K., Yoshimura, A., and Flier, J.S. (2006). Enhanced leptin sensitivity and improved glucose homeostasis in mice lacking suppressor of cytokine signaling-3 in POMC-expressing cells. *Cell Metab.* 4, 123–132.
- Kitamura, T., Feng, Y., Kitamura, Y.I., Chua, S.C., Jr., Xu, A.W., Barsh, G.S., Rossetti, L., and Accili, D. (2006). Forkhead protein FoxO1 mediates Agrp-dependent effects of leptin on food intake. *Nat. Med.* 12, 534–540.
- Koch, L., Wunderlich, F.T., Seibler, J., Könnner, A.C., Hampel, B., Irlenbusch, S., Brabant, G., Kahn, C.R., Schwenk, F., and Brüning, J.C. (2008). Central insulin action regulates peripheral glucose and fat metabolism in mice. *J. Clin. Invest.* 118, 2132–2147.
- Könnner, A.C., Janoschek, R., Plum, L., Jordan, S.D., Rother, E., Ma, X., Xu, C., Enriori, P., Hampel, B., Barsh, G.S., et al. (2007). Insulin action in AgRP-expressing neurons is required for suppression of hepatic glucose production. *Cell Metab.* 5, 438–449.
- Kowalski, T.J., Liu, S.M., Leibel, R.L., and Chua, S.C., Jr. (2001). Transgenic complementation of leptin-receptor deficiency. I. Rescue of the obesity/diabetes phenotype of LEPR-null mice expressing a LEPR-B transgene. *Diabetes* 50, 425–435.
- Leshan, R.L., Louis, G.W., Jo, Y.H., Rhodes, C.J., Münzberg, H., and Myers, M.G., Jr. (2009). Direct innervation of GnRH neurons by metabolic- and sexual odorant-sensing leptin receptor neurons in the hypothalamic ventral premammillary nucleus. *J. Neurosci.* 29, 3138–3147.
- McGee, E., Sawetawan, C., Bird, I., Rainey, W.E., and Carr, B.R. (1995). The effects of insulin on 3 beta-hydroxysteroid dehydrogenase expression in human luteinized granulosa cells. *J. Soc. Gynecol. Investig.* 2, 535–541.
- Mirshamsi, S., Laidlaw, H.A., Ning, K., Anderson, E., Burgess, L.A., Gray, A., Sutherland, C., and Ashford, M.L.J. (2004). Leptin and insulin stimulation of signalling pathways in arcuate nucleus neurones: PI3K dependent actin reorganization and KATP channel activation. *BMC Neurosci.* 5, 54.
- Morton, G.J., Niswender, K.D., Rhodes, C.J., Myers, M.G., Jr., Blevins, J.E., Baskin, D.G., and Schwartz, M.W. (2003). Arcuate nucleus-specific leptin receptor gene therapy attenuates the obesity phenotype of Koletsy (fa(k)/fa(k)) rats. *Endocrinology* 144, 2016–2024.
- Morton, G.J., Gelling, R.W., Niswender, K.D., Morrison, C.D., Rhodes, C.J., and Schwartz, M.W. (2005). Leptin regulates insulin sensitivity via phosphatidylinositol-3-OH kinase signaling in mediobasal hypothalamic neurons. *Cell Metab.* 2, 411–420.
- Nawrocki, A.R., Rajala, M.W., Tomas, E., Pajvani, U.B., Saha, A.K., Trumbauer, M.E., Pang, Z., Chen, A.S., Ruderman, N.B., Chen, H., et al. (2006). Mice lacking adiponectin show decreased hepatic insulin sensitivity and reduced responsiveness to peroxisome proliferator-activated receptor gamma agonists. *J. Biol. Chem.* 281, 2654–2660.
- Nelson, V.L., Qin, K.N., Rosenfield, R.L., Wood, J.R., Penning, T.M., Legro, R.S., Strauss, J.F., 3rd, and McAllister, J.M. (2001). The biochemical basis for increased testosterone production in theca cells propagated from patients with polycystic ovary syndrome. *J. Clin. Endocrinol. Metab.* 86, 5925–5933.
- Niswender, K.D., Morton, G.J., Stearns, W.H., Rhodes, C.J., Myers, M.G., Jr., and Schwartz, M.W. (2001). Intracellular signalling. Key enzyme in leptin-induced anorexia. *Nature* 413, 794–795.
- Niswender, K.D., Morrison, C.D., Clegg, D.J., Olson, R., Baskin, D.G., Myers, M.G., Jr., Seeley, R.J., and Schwartz, M.W. (2003). Insulin activation of phosphatidylinositol 3-kinase in the hypothalamic arcuate nucleus: a key mediator of insulin-induced anorexia. *Diabetes* 52, 227–231.
- Obici, S., Zhang, B.B., Karknias, G., and Rossetti, L. (2002). Hypothalamic insulin signaling is required for inhibition of glucose production. *Nat. Med.* 8, 1376–1382.

- Okamoto, H., Nakae, J., Kitamura, T., Park, B.-C., Dragatsis, I., and Accili, D. (2004). Transgenic rescue of insulin receptor-deficient mice. *J. Clin. Invest.* *114*, 214–223.
- Perello, M., Stuart, R.C., and Nillni, E.A. (2007). Differential effects of fasting and leptin on proopiomelanocortin peptides in the arcuate nucleus and in the nucleus of the solitary tract. *Am. J. Physiol. Endocrinol. Metab.* *292*, E1348–E1357.
- Pfluger, P.T., Kirchner, H., Günzel, S., Schrott, B., Perez-Tilve, D., Fu, S., Benoit, S.C., Horvath, T., Joost, H.G., Wortley, K.E., et al. (2008). Simultaneous deletion of ghrelin and its receptor increases motor activity and energy expenditure. *Am. J. Physiol. Gastrointest. Liver Physiol.* *294*, G610–G618.
- Plum, L., Ma, X., Hampel, B., Balthasar, N., Coppari, R., Münzberg, H., Shanabrough, M., Burdakov, D., Rother, E., Janoschek, R., et al. (2006). Enhanced PIP3 signaling in POMC neurons causes KATP channel activation and leads to diet-sensitive obesity. *J. Clin. Invest.* *116*, 1886–1901.
- Popova, N.K., Maslova, L.N., Morosova, E.A., Bulygina, V.V., and Seif, I. (2006). MAO A knockout attenuates adrenocortical response to various kinds of stress. *Psychoneuroendocrinology* *31*, 179–186.
- Porte, D., Jr., Baskin, D.G., and Schwartz, M.W. (2002). Leptin and insulin action in the central nervous system. *Nutr. Rev.* *60*, S20–S29, discussion S68–S84, 85–87.
- Salvi, R., Castillo, E., Voirol, M.-J., Glauser, M., Rey, J.-P., Gaillard, R.C., Vollenweider, P., and Pralong, F.P. (2006). Gonadotropin-releasing hormone-expressing neurons immortalized conditionally are activated by insulin: implication of the mitogen-activated protein kinase pathway. *Endocrinology* *147*, 816–826.
- Shi, H., Strader, A.D., Sorrell, J.E., Chambers, J.B., Woods, S.C., and Seeley, R.J. (2008). Sexually different actions of leptin in proopiomelanocortin neurons to regulate glucose homeostasis. *Am. J. Physiol. Endocrinol. Metab.* *294*, E630–E639.
- Soldani, R., Cagnacci, A., and Yen, S.S. (1994). Insulin, insulin-like growth factor I (IGF-I) and IGF-II enhance basal and gonadotrophin-releasing hormone-stimulated luteinizing hormone release from rat anterior pituitary cells in vitro. *Eur. J. Endocrinol.* *131*, 641–645.
- Ste Marie, L., Miura, G.I., Marsh, D.J., Yagaloff, K., and Palmiter, R.D. (2000). A metabolic defect promotes obesity in mice lacking melanocortin-4 receptors. *Proc. Natl. Acad. Sci. USA* *97*, 12339–12344.
- Tortoriello, D.V., McMinn, J.E., and Chua, S.C. (2007). Increased expression of hypothalamic leptin receptor and adiponectin accompany resistance to dietary-induced obesity and infertility in female C57BL/6J mice. *Int. J. Obes (Lond)* *31*, 395–402.
- van de Wall, E., Leshan, R., Xu, A.W., Balthasar, N., Coppari, R., Liu, S.M., Jo, Y.H., MacKenzie, R.G., Allison, D.B., Dun, N.J., et al. (2008). Collective and individual functions of leptin receptor modulated neurons controlling metabolism and ingestion. *Endocrinology* *149*, 1773–1785.
- Virtue, S., and Vidal-Puig, A. (2008). It's not how fat you are, it's what you do with it that counts. *PLoS Biol.* *6*, e237.
- Williams, K.W., Margatho, L.O., Lee, C.E., Choi, M., Lee, S., Scott, M.M., Elias, C.F., and Elmquist, J.K. (2010). Marked segregation of acute leptin and insulin effects in distinct populations of arcuate Proopiomelanocortin neurons. *J. Neurosci.* *30*, 2472–2479.
- Woods, S.C., Lotter, E.C., McKay, L.D., and Porte, D., Jr. (1979). Chronic intracerebroventricular infusion of insulin reduces food intake and body weight of baboons. *Nature* *282*, 503–505.
- Xu, A.W., Ste-Marie, L., Kaelin, C.B., and Barsh, G.S. (2007). Inactivation of signal transducer and activator of transcription 3 in proopiomelanocortin (Pomc) neurons causes decreased pomc expression, mild obesity, and defects in compensatory refeeding. *Endocrinology* *148*, 72–80.
- Zhang, G., and Veldhuis, J.D. (2004). Insulin drives transcriptional activity of the CYP17 gene in primary cultures of swine theca cells. *Biol. Reprod.* *70*, 1600–1605.
- Zinker, B., Mika, A., Nguyen, P., Wilcox, D., Ohman, L., von Geldern, T.W., Oppenorth, T., and Jacobson, P. (2007). Liver-selective glucocorticoid receptor antagonism decreases glucose production and increases glucose disposal, ameliorating insulin resistance. *Metabolism* *56*, 380–387.
- Zurvarra, F.M., Salvetti, N.R., Mason, J.I., Velazquez, M.M., Alfaro, N.S., and Ortega, H.H. (2009). Disruption in the expression and immunolocalisation of steroid receptors and steroidogenic enzymes in letrozole-induced polycystic ovaries in rat. *Reprod. Fertil. Dev.* *21*, 827–839.