

## HOW TO USE THIS MAP

- UToledo's Major Map is a guide for you to plan for future success while you explore your University experience. The five rows of the map provide a step-by-step guide to integrate your academic courses with experiences on and off-campus that will help build your career readiness.
- Start thinking about life beyond college now and use the map to set short- and long-term goals, such as preparing for graduate or professional schools, preparing for your first career-track job and networking with others in your profession.

## RESOURCES FOR SUPPORT

From orientation to graduation, there are many resources to support your University experience.

Your success coach is like your personal GPS. As you navigate from where you are to where you want to be, coaches offer one-on-one guidance and support through referrals to academic support services and other campus resources, and connections to campus engagement and experiential learning opportunities. Visit [utoledo.edu/success-coach](http://utoledo.edu/success-coach) to connect with your success coach.

Career Services provides comprehensive career planning and preparation services for all UToledo students in order to clarify and implement their academic and career goals. Connect with Career Services during your first year and continue working with them often throughout your academic career. Visit [utoledo.edu/career](http://utoledo.edu/career) to learn more about the programs, services and events to support your success.



## TOP FIVE REASONS TO STUDY ENVIRONMENTAL STUDIES AT UTOLEDO

- 1** The NW Ohio region is the perfect place to study the environment. The diverse ecosystems – wetlands, savannahs, woodlands – combined with the location near Lake Erie, and a large human population, make for an ideal natural laboratory.
- 2** Experiential learning through hands-on undergraduate research, as early as your first year, working directly with faculty that are experts in their field.
- 3** Work in outstanding labs and facilities such as the UToledo Lake Erie Center and UToledo's Stranahan Arboretum.
- 4** Choose a minor and apply your skills in an area of interest to you!
- 5** Graduate with hands-on research and field-work experience as well as 100 hours of internship experience.

## PUTTING YOUR DEGREE TO WORK

- City, State & Local Government
- Conservation
- Consulting Services
- Energy
- Environmental Services
- Food Production
- Land Management
- Non-Profit Organizations
- Planning & Sustainability
- Rescue & Rehabilitation
- Restaurant & Food Services



## BUILD YOUR EXPERIENCE BEYOND THE CLASSROOM

Service-learning activities offered by our department build job skills and help you network with potential employers. Our students assist the State of Ohio with restoration work eliminating invasive species at Irwin Prairie and also grow food for the community while learning about urban agriculture with our partners at The University Church (TUC) Garden.

Get involved with faculty research projects and learn in the field by doing!

## AMPLIFY YOUR MAJOR

- Study abroad during your junior year in a yearlong exchange program with The University of Salford in Manchester, England. All courses transfer seamlessly.
- Get involved in undergraduate research and service learning, it will make you stand out and you may also have the opportunity to present and publish your research results in scientific literature and at conferences.

**“The relationships I built with researchers and staff at UToledo and the Lake Erie Center have greatly benefitted my work as a water quality professional. My professors and mentors as an undergraduate and graduate student are now partners in improving water resources in northwest Ohio!”**

KARI GERWIN, Director of Water Quality Planning, Toledo Metropolitan Area Council of Governments, OH, B.S. Environmental Studies, '03 and M.A. in Environmental Geography, '06

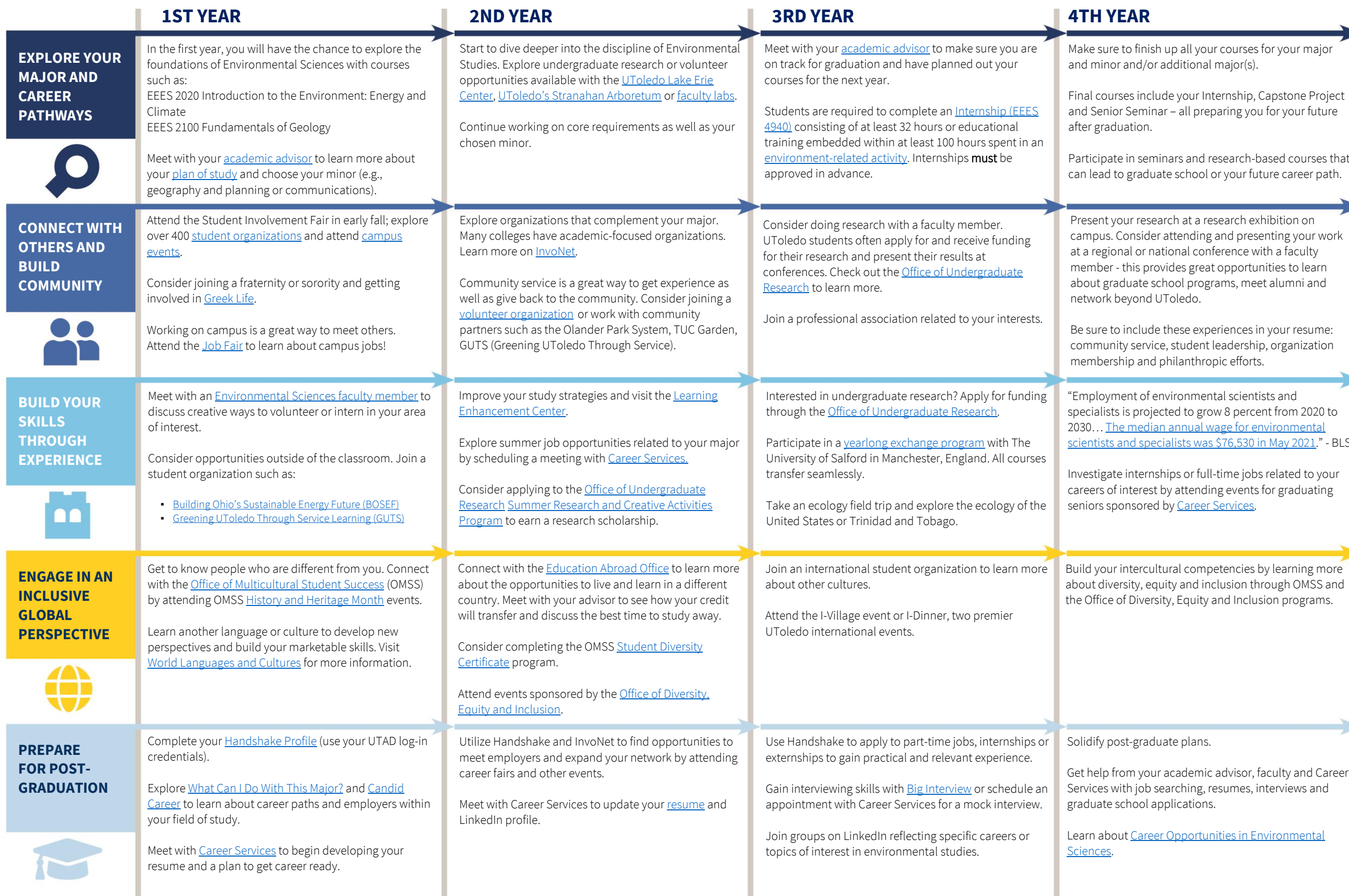
## COLLEGE OF NATURAL SCIENCES AND MATHEMATICS

Department of Environmental Sciences  
Main Campus, Wolfe Hall, Room #1235  
419.530.2009

[envsciences@utoledo.edu](mailto:envsciences@utoledo.edu)  
[utoledo.edu/nsm/envsciences/](http://utoledo.edu/nsm/envsciences/)



FUELING TOMORROWS



## WHAT WILL I LEARN?

Develop your career readiness competencies to ensure you are prepared to launch your career upon graduation:

- Career & Self Development
- Communication
- Critical Thinking
- Equity & Inclusion
- Leadership
- Professionalism
- Teamwork
- Technology

## HOW WILL I USE IT?

Use your degree to attain career positions such as:

- Community planning specialist
- Compliance program coordinator
- Consultant
- Development specialist
- Education coordinator
- Education & outreach coordinator
- Environmental field technician
- Environmental protection specialist
- Environmental restoration planner
- Government environmental consultant
- Habitat restoration coordinator
- Natural resource specialist
- Occupational health & safety specialist
- Policy analyst
- Public relations
- Research associate
- Seasonal environmental naturalist
- Stormwater planner
- Sustainability specialist
- Technical report writer
- Water resource specialist