

What you need to know about AAALAC International's expectations and interpretations related to the new standards for animal care and use

Your guide to the new standards

AAALAC will use three primary standards

During the Fall (September through November) 2011 trimester, AAALAC International's Council on Accreditation will begin to use **three primary standards to evaluate animal care and use programs**: the 8th Edition of the *Guide for the Care and Use of Laboratory Animals* (Guide, NRC 2011); the *Guide for the Care and Use of Agricultural Animals in Research and Teaching* (Ag Guide, FASS 2010); and the European Convention for the Protection of Vertebrate Animals Used for Experimental and Other Scientific Purposes, Council of Europe (ETS 123).

The Council on Accreditation has used all three documents for several years and their adoption by AAALAC's Board of Trustees as primary standards signifies the importance of these performance-based guidelines in the accreditation process.

Revised Program Description

AAALAC has revised the Institutional Animal Care and Use Program Description to reflect the new and updated content in the *Guide* and to encompass principles and guidance in the *Ag Guide* and ETS 123. You can download copies of the instructions and the revised Program Description at www.aaalac.org/programdesc/index.cfm.

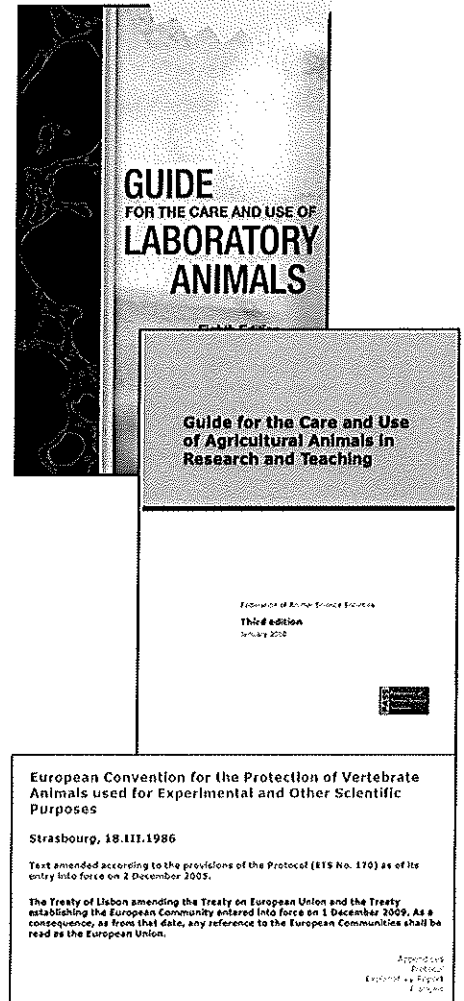
Proposed new or replacement Position Statements

(30-day public comment period ended March 16, 2011)

As a consequence of the publication of the new *Guide* and the adoption of three primary standards for conducting accreditation assessments, the Council proposed several **new or replacement Position Statements**. Position Statements serve to advise institutions participating in the AAALAC International accreditation program regarding AAALAC's expectations for implementation of an accreditable animal care and use program, and provide AAALAC's interpretation of some recommendations in the *Guide*.

The proposed Position Statements reflect the conclusions from an in-depth analysis of the *Guide*, *Ag Guide* and the European Directive conducted by the 51-member Council over a two-day retreat during the Summer of 2010. AAALAC International offered a **30 day comment period** for feedback from the scientific and laboratory animal science and medicine communities through March 16, 2011. (The Council will review the proposed Position Statements in the context of the comments received before issuing the Position Statements in final format.) Links to the current Position Statements are available at: www.aaalac.org/accreditation/positionstatements.cfm

continued on back page...



Visit: www.aaalac.org/about/guidelines.cfm



Additional FAQs to provide clarification

The Council on Accreditation has developed several **Frequently Asked Questions** (FAQs) to provide clarification and AAALAC's interpretation of several potential ambiguities in the new *Guide*. These FAQs supplement others previously posted on the AAALAC website. All FAQs are available online at: www.aaalac.org/accreditation/faq_landing.cfm.

Background on AAALAC International's review and implementation process

As mentioned above, AAALAC's adoption of the three primary standards and the new materials resulted from an in-depth analysis of the *Guide*, *Ag Guide* and the European Directive conducted by the 51-member Council over a two-day retreat during the Summer of 2010 and multiple face-to-face, web-based and teleconference meetings. A detailed explanation of **how this review was conducted** can be found at www.aaalac.org/about/GuideTransition.cfm.

Education and training to support the transition to the new standards

In the months ahead, AAALAC International will also be offering a series of **online webinars and other education sessions** to discuss the new standards and AAALAC's expectations for accredited institutions. We will email and post announcements about these opportunities on our website as soon as they become available. For more information about AAALAC's supporting educational and outreach activities email jbradfield@aaalac.org.

Questions?

Email accredit@aaalac.org or call +301.696.9626

