

Computer Science and Engineering Flow Chart Fall 2020 & After

Shaded boxes are LCCC courses. Plain boxes are UT courses.

Lines with arrows between courses indicate a pre-requisite

Dotted lines indicate courses taken prior to or concurrent with a course.

Pre-requisites (PR) listed below course; or see catalog; not all are "lined".

Courses should typically be taken in the order shown due to pre-reqs/offerings.

Selection of Hums/Soc/MC Div. electives must be selected from UT Core

Brackets [1], [2], [3] indicate pre-requisites for co-ops 1,2, and 3

Minimum GPA of 3.0 overall (combined) is suggested for Co-Op eligibility.

Co-Ops are to be completed in rotation shown, exceptions must be pre-approved.

All CSE students at the LCCC campus are required to meet with the Associate Director (AD) for advising & registration each semester.

All schedule adjustments/withdrawals must be approved by AD.

Summer courses are recom'd 1st & 4th years in program to reduce

course load, esp. in final semester; required during co-op rotations.

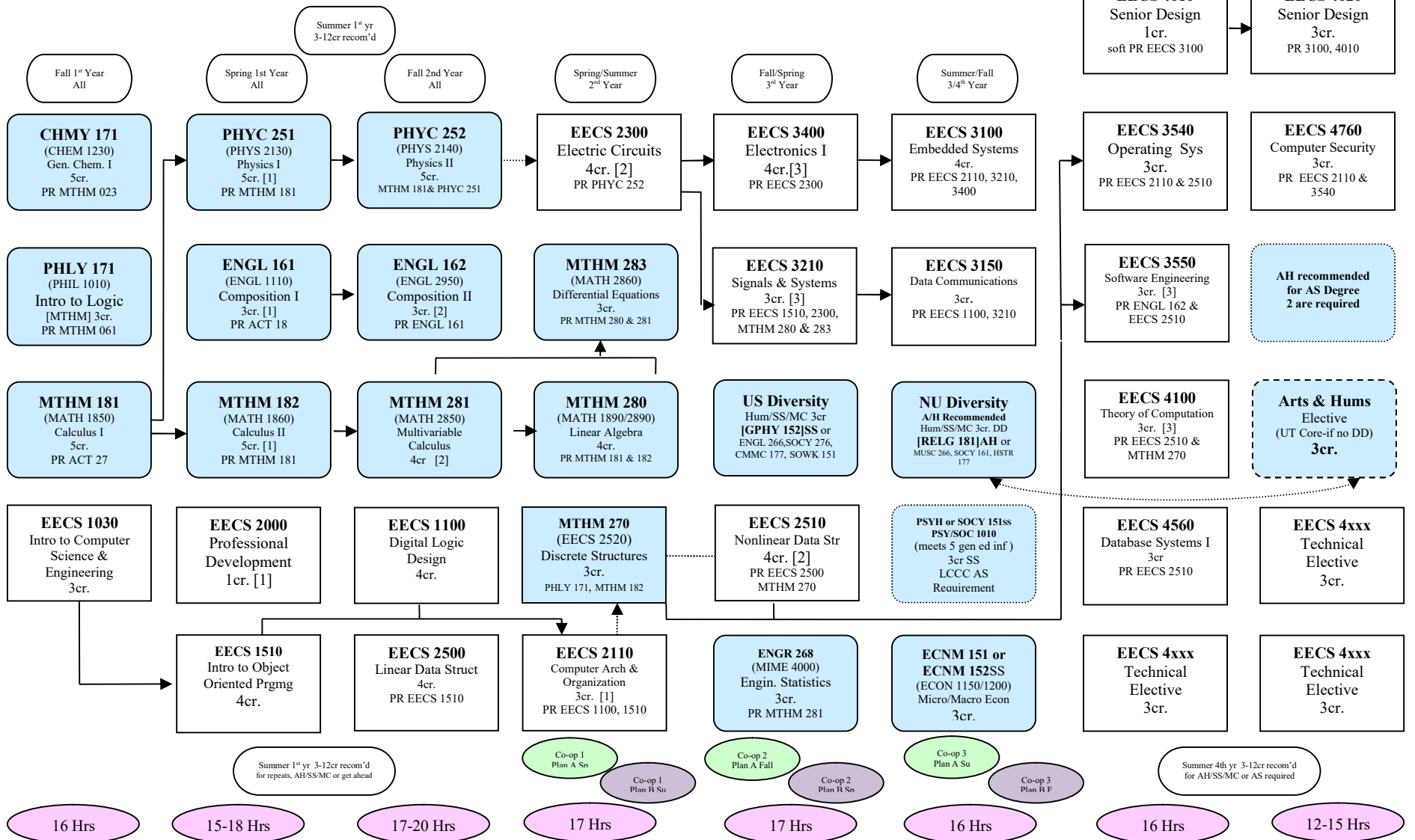
This is a 4.5-5 yr program due to co-ops and lockstep nature.

Most courses have pre-reqs even if not indicated by lines.

Pre-reqs are listed in each block or see AD concerning pre-reqs.

CSE Flow Chart for LCCC varies slightly from main campus.

Variances: ENGL 161/162 in 2nd& 3rd semester due to total cr. hrs. in 1st sem. vs. @ UT. ENGR 268 in F/Sp instead of Su/F due to LCCC course/instructor . 132 cr total due to 1 add'l. cr hr in LCCC MTHM 181, 182, 280 & CHMY 171.



This Flow Chart is Effective for Students entering the program Fall 2020 or after.