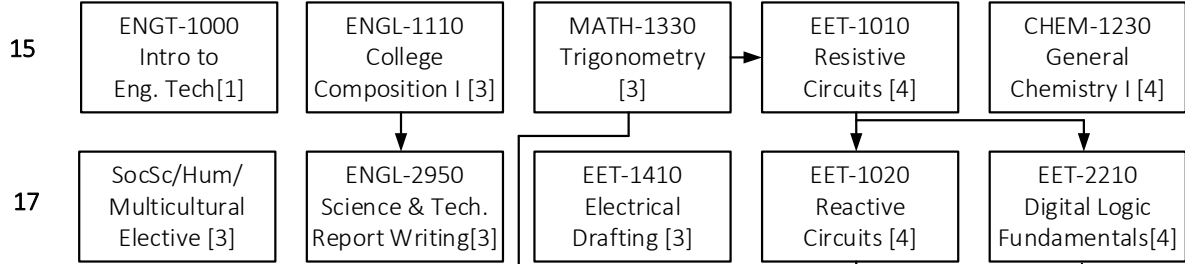


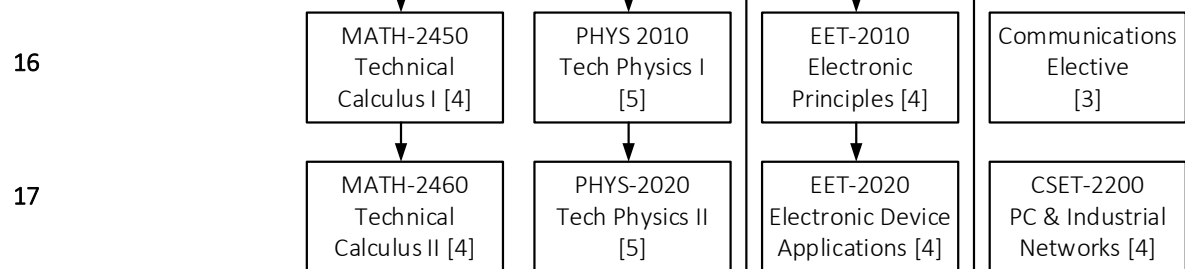
Electrical Engineering Technology Curriculum – Full Time

Effective Fall 2019

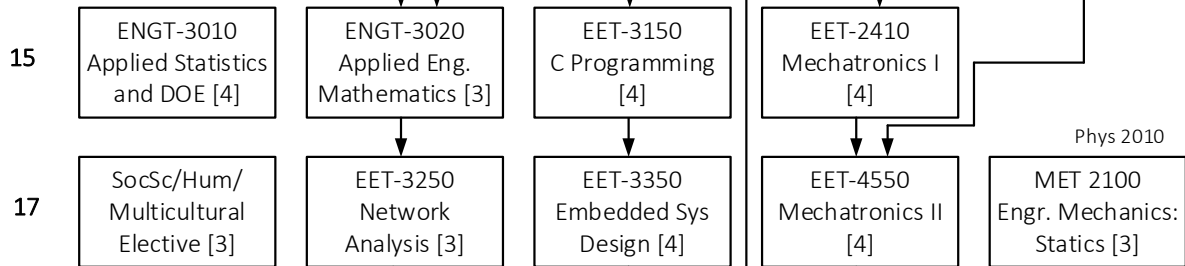
FRESHMAN



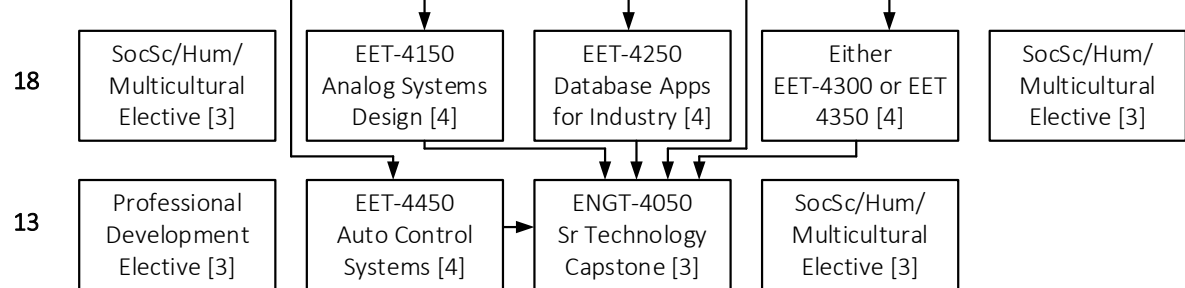
SOPHOMORE



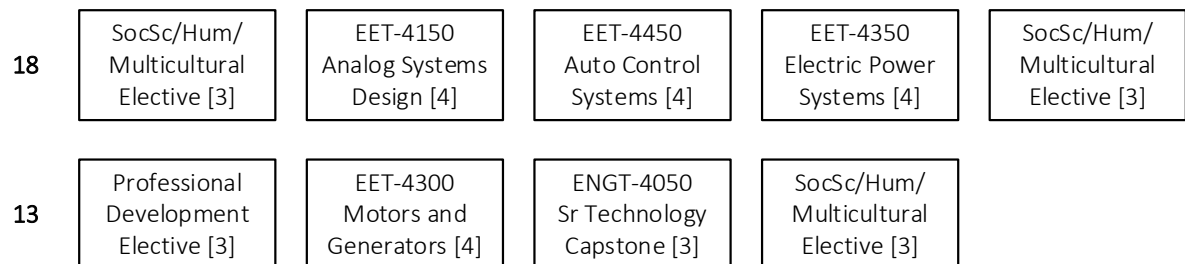
JUNIOR



SENIOR without Power Option



SENIOR with Power Option (both EET 4350 and EET 4300)



128 Hours Total

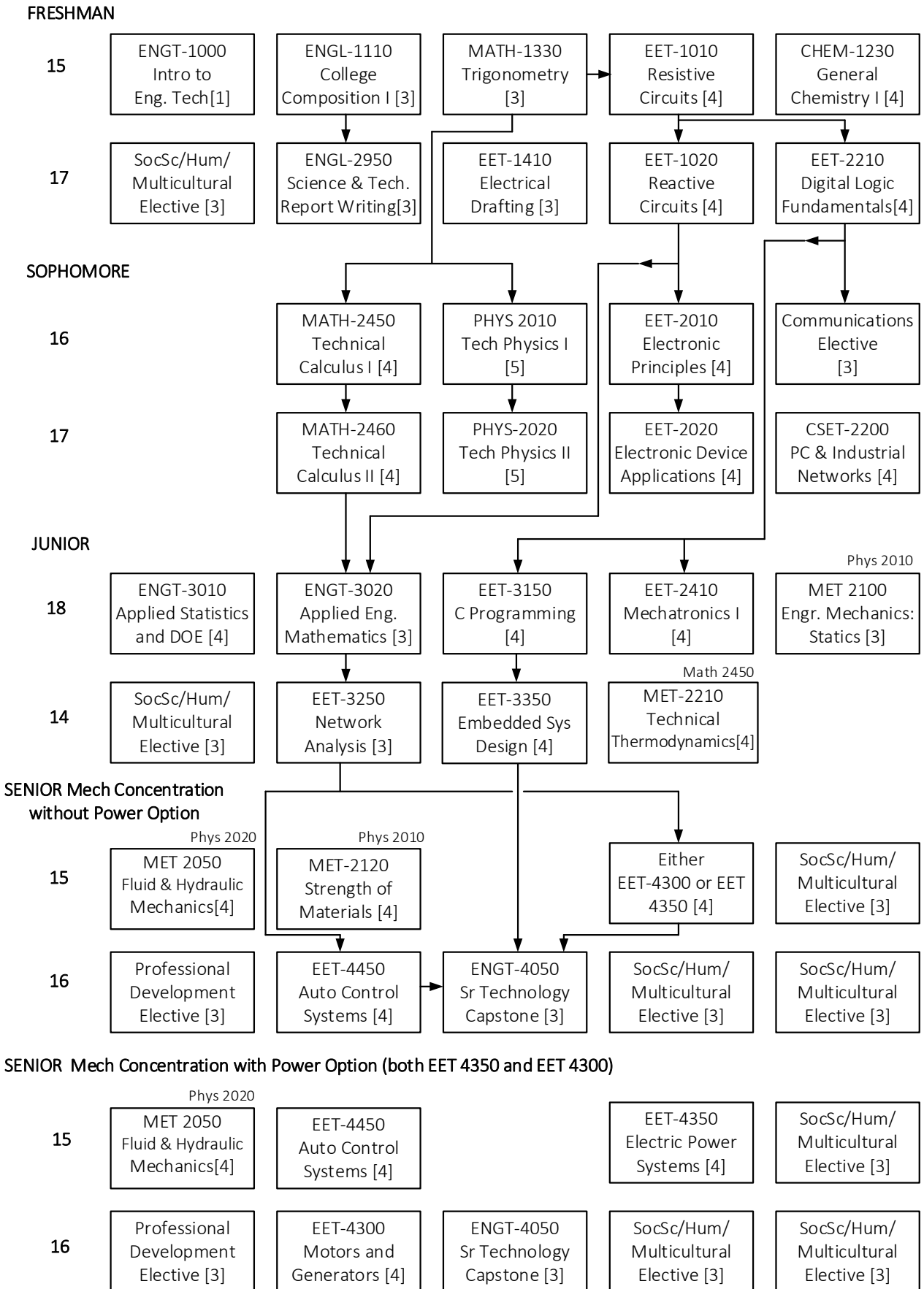
Refer to the "Pink Sheet" for allowable Humanities, Social Science or Multi-Cultural Electives.

For Communications and Professional Development Electives, refer to your Degree Audit for authorized electives.

Students must use the "double-dip" option on the pink sheet to complete Hum/Soc/MC requirements in 5 courses as shown.

Physics courses shown as 5 hours and may be taken as 4 hours. If this occurs, a deficiency below 128 hours may occur.

Electrical Engineering Technology Curriculum – Full Time Mechanical Concentration – Effective Fall 2019



128 Hours Total

Refer to the "Pink Sheet" for allowable Humanities, Social Science or Multi-Cultural Electives.

For Communications and Professional Development Electives, refer to your Degree Audit for authorized electives.

Students must use the "double-dip" option on the pink sheet to complete Hum/Soc/MC requirements in 5 courses as shown.

Physics courses shown as 5 hours and may be taken as 4 hours. If this occurs, a deficiency below 128 hours may occur.