

JHCEHSHS STUDENT TECHNOLOGY FEE REQUEST FORM

Procedure for Submission:

Form Updated: 3/28/12

1. Submitter must obtain all required information from the desired vendor(s). An official quote from the vendor must be attached.
2. Only one request per Request Form. This request must be reviewed, approved, and submitted by the requesting program's Department Chair.
3. The Dept. Chair may email this request to the Tech Fee Director. (Since some departments will have multiple requests, please rename request in the following format ABC_Request_# where "ABC" is your department and "#" is the numbering of your request)

Dept. making request:	Criminal Justice and Social Work	Requesting Faculty:	A. Mick Dier
Date submitted:	10-12-2012	Requested purchase date:	12-1-2012

IMPORTANT: Attach an official quote from the vendor.

List one item OR group (for use as a "package") per page.

Item Name and Description	Vendor info. (name, address, Web site URL, phone #, email, etc.)	Part or Model #	Cost (each)	Qty	Total
1. Crime Scene Drawing Template	Crime Scene Supplies 3440 N. 16 th Ste #4	6-BA-5425	16.50	25	425.50
2. Crime Scene Tape	Phoenix Az 85016	30955066851	14.00	10	140.00
3. Synthetic Blood	623-585-8573	1-syntheticblo	10.00	2	20.00
4. Blood Spatter Kit	www.crimescene.com	10-550	179.00	1	179.00
5. Blood Spatter refill kit		10-550R	65.00	1	65.00
6. Footprint casting power		TRXT-20BB	87.95	1	87.95
					916.95
Course(s) where item(s) will be used	Criminal Investigation II, III, and Child Advocacy	Required for accreditation?	n	# Students Impacted per Year	125
Location equipment or software will be used	HHS Forensic Science Lab Rm 3011	Will this be an ongoing expense (if yes how much annual)?	n		

Impact on student learning (attach additional pages if needed):

The purposes of the Forensic Bodies are to provide the student a realistic view and understanding of Crime Scene Investigations and Reconstruction. The bodies are used as exhibits during several mock crime scenes throughout the semester. The classes are design utilizing build blocks or phases where the students are given pieces of information regarding a particular crime and they are asked to investigate that situation using the skills they were taught. The students use the reconstruction techniques to develop a likely sequence of events at the crime scene by observing and evaluating physical evidence. The bodies provide a more realistic view regarding crime scene investigations.

The field of Crime Scene Investigation and Reconstruction is an ever evolving field of the Criminal Justice system. Not only are these Forensic Bodies an essential piece in the utilization of current and future criminal justice technology, but the above mentioned items are critical in maintaining a hands on application in the area of forensic science. Each item listed above has its own educational value in the area Criminal Justice.

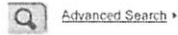
- **Equipment/Technology purchased with Tech Fee funds is for student use only. It cannot be filtered or "passed-down" to faculty or staff.**
- All outdated or broken Tech Fee equipment/technology must be returned to the Tech Fee Committee for retirement or disposal.
- If you are submitting a request for computers, printers, scanners or software, you must consult with College Computing and the technology staff, to acquire a quote and to make sure that this equipment/software is supported by UT.



Crime Scene sells forensic supplies and detective clothing to the public. We are also home to an interactive detective game. | [View Crime Scene Cases](#) |

Currency: US Dollar

Search for...



Customer service: 1-823-565-8573



Your cart is empty

[New Products](#) [Specials](#) [Featured products](#) [My Account](#) [Contact us](#)

[Log In](#) or [Register](#)

Crime Scene Drawing Template

Order today for delivery tomorrow. We accept Visa, Mastercard, Amex, Discover, Paypal and money orders. We also accept purchase orders from schools and government agencies. Add **free evidence bag gift wrap**.



Click image to enlarge

Price: ~~\$48.00~~ \$16.50

Save: 8% off

★★★★★

Model: G-BA-5425

Recommend this on Google

Like

Send

4 people like this. Sign Up to see what your friends like.

Add to Cart:

ADD TO CART +

[Product description](#) [Reviews](#)

Use this template to create a professional crime scene sketch quickly. The crime scene template shows furniture, plumbing fixtures and human figures. This green plastic template is 8 1/2" x 11" and can be stored in a three ring binder. Scale is 1/4" = 1' and 1/10" = 1'. *Shipping weight 4 ounces.*

Product 2/34

[Previous](#) | [Return to the Product List](#) | [Next](#)

Customers who bought this product also purchased...



[Phenolphthalein Presumptive Blood Test Kit](#)
\$39.90



[Gunshot Residue Collection Kit](#)
\$7.49



[The Breeze Fiberglass Fingerprinting Brush](#)
\$10.00

Information

- [Shipping & Returns](#)
- [Privacy Notice](#)
- [Conditions of Use](#)
- [Contact Us](#)
- [Site Map](#)
- [Discount Coupons](#)
- [Newsletter Unsubscribe](#)

Business Address

Crime Scene
3440 N 16th St, Ste #4
Phoenix, AZ 85016
Voice (623) 565-8573
Fax (602)-274-7280



Copyright © 2012 [Crime Scene](#). Powered by [Zen Cart](#).

3440 N 16TH STE 4
PHOENIX AZ 85016
623-565-8573
www.crimescene.com



Crime Scene sells forensic supplies and detective clothing to the public. We are also home to an interactive detective game. | [View Crime Scene Cases](#) |

Currency: US Dollar

Search for...



[Advanced Search](#) >

Customer service: 1-823-565-8573



Your cart is empty

[New Products](#) [Specials](#) [Featured products](#) [My Account](#) [Contact us](#)

[Log In](#) or [Register](#)

Crime Scene Do Not Cross Tape

Order today for delivery tomorrow. We accept Visa, Mastercard, Amex, Discover, Paypal and money orders. We also accept purchase orders from schools and government agencies. **Add free evidence bag gift wrap.**



Price: \$14.00

★★★★★

Model: 30955066851

Recommend this on Google

Sign Up to see what your friends like.

Qty Discounts New Price

Qty	Discounts	New Price
1-7		\$14.00
8+		\$12.00

Add to Cart:

[Product description](#) [Reviews](#)

This tape says Crime Scene Do Not Cross.

Bright yellow official barrier tape is useful for blocking off danger areas. Restrict access to crime scenes with this highly visible yellow polyethylene tape. Printed with large black letters. 1000 ft long, 3 inches wide, 3.5 mil thick.

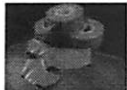
The Crime Scene tape is priced lower than the others tapes due to a volume discount that allows us to pass the savings to our customers.

A bulk discount is available for quantities over 8 rolls.

Product 2/12

[Previous](#) | [Return to the Product List](#) | [Next](#)

Customers who bought this product also purchased...



[Barricade Tape, Red](#)
\$8.00



[Red Evidence Tape - Sawtooth](#)
\$8.00



[DNA Double Helix Kit](#)
\$7.95

Information

- [Shipping & Returns](#)
- [Privacy Notice](#)
- [Conditions of Use](#)
- [Contact Us](#)
- [Site Map](#)
- [Discount Coupons](#)
- [Newsletter Unsubscribe](#)

Business Address

Crime Scene
3440 N 16th St, Ste #4
Phoenix, AZ 85016
Voice (623) 565-8573
Fax (602)-274-7280



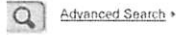
Copyright © 2012 [Crime Scene](#). Powered by [Zen Cart](#).



Crime Scene sells forensic supplies and detective clothing to the public. We are also home to an interactive detective game. | [View Crime Scene Cases](#) |

Currency: US Dollar

Search for...



Customer service: 1-623-565-8573



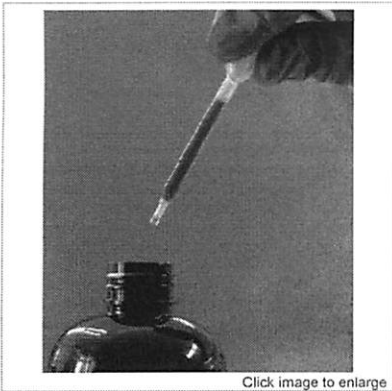
Your cart is empty

[New Products](#) [Specials](#) [Featured products](#) [My Account](#) [Contact us](#)

[Log In](#) or [Register](#)

Synthetic Blood

Order today for delivery tomorrow. We accept Visa, Mastercard, Amex, Discover, Paypal and money orders. We also accept purchase orders from schools and government agencies. **Add free evidence bag gift wrap.**



Click image to enlarge

Starting at: \$10.00

★★★★★

Model: 1-SYNTHETICBLOOD

Recommend this on Google

One person likes this. Sign Up to see what your friends like.

Blood

Synthetic Blood 1 oz (C-125) (\$10.00)

Add to Cart:

[Product description](#) [Additional images](#) [Reviews](#)

If you intend to carry out an experiment with luminol, heme-stix or a blood-related project, our **synthetic blood** will allow you to work safely. There are no biological ingredients to this solution. Available in 1 or 8 ounce bottles. **Note:** Synthetic blood does not show up under UV light. Not for human consumption.

In addition to chemical synthetic blood we also carry theatrical stage blood products. All blood products are listed below. Select the item you want using the pulldown menu.

Stage Blood: authentically simulates the color and viscosity of real blood for any professional application including theater, film or disaster training. Available in 2 oz containers and safe for use in the mouth, Stage Blood is excellent for use in blood capsules and has a zesty mint flavor.

Fresh Scab: is a gel-like dark blood creates 3-dimensional wounds and scabs. The outer layer "scabs"over. Apply with Thick Blood for greater realism. Available in a 1oz container and safe in mouth but do not ingest.

Gelatin Blood Capsules: 1/2 oz blood with 12 capsules in a convenient case. Open capsule, and fill one half nearly full with blood. Capsules hold their shape even if not used for several days. Minty flavored and safe to use in mouth. Place in mouth and bite down to release blood.

Synthetic blood is a chemical product. It does not mimic the appearance of blood and is not useful for creating fake crime scenes.

Choose from Synthetic Blood, Stage Blood, Fresh Scab, or Gelatin Blood Capsules using the pull-down menu.

Product 3/12

[Previous](#) | [Return to the Product List](#) | [Next](#)

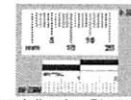
Customers who bought this product also purchased...



[Movie Style Body bag](#)
\$28.50



[Fingerprint Mini Kit](#)
\$20.00



[20mm Adhesive Photo Scales](#)
\$8.50

Information

[Shipping & Returns](#)
[Privacy Notice](#)
[Conditions of Use](#)
[Contact Us](#)
[Site Map](#)
[Discount Coupons](#)
[Newsletter Unsubscribe](#)

Business Address

Crime Scene
3440 N 16th St, Ste #4
Phoenix, AZ 85016
Voice (623) 565-8573
Fax (602)-274-7280





Copyright © 2012 [Crime Scene](#). Powered by [Zen Cart](#).



Crime Scene sells forensic supplies and detective clothing to the public. We are also home to an interactive detective game. | [View Crime Scene Cases](#) |

Currency:

Search for...



Customer service: 1-823-565-8573

Your cart is empty



[New Products](#) [Specials](#) [Featured products](#) [My Account](#) [Contact us](#)

[Log In](#) or [Register](#)

Blood Spatter Kit

Order today for delivery tomorrow. We accept Visa, Mastercard, Amex, Discover, Paypal and money orders. We also accept purchase orders from schools and government agencies. Add **free evidence bag gift wrap**.



Click image to enlarge

Starting at: **\$179.95**

Model: 10-550

Recommend this on Google

Sign Up to see what your friends like.

Science Education

Add to Cart:

Product description

The Blood Spatter Kit consists of 6 different experiments to work through with students/children. This kit helps children learn how physics plays a role in a criminal investigation such as blood spatter. Students will complete the experiments and learn things like how gravity affects a stain pattern.

The Blood Spatter Kit is for use under the supervision of a parent or teacher by grades 8-14

The materials in this kit are sufficient for 24 students working in groups of 2 or 4.

Use the pull-down menu to select a full kit or a refill kit.

Instructors Manual

Assessment Manual

MSDS

Student Data Sheet Exp. #1 Procedure1

Student Data Sheet Exp.#1 Procedure 2

Micro tip pipet

Simulated blood

Magnifying Glasses

Ruler in Metric 15cm

Metric Ruler 10 to 12 ft.

Protractors

Student Data Sheet Exp. #2 Procedure 1

Student Data Sheet Exp. #2 Procedure 2

Simulated Blood hemoglobin clear

Luminol with sprayer bottle

Filter paper

Clipboards

Student Data Sheet Exp. #4

Blood Spatter Chamber

Dowel Rods

Hammer

Blood Spatter Chamber Pedestal

Blood Spatter Paper (Copy Paper)

Rubber Bands

Student Data Sheet, Blood Spatter Interpretation(Sixteen General Rules)

Student Data Sheet, Exp.#5 Handout (Investigation Terminology)

Student Data Test Exp. #6

Materials Needed but not included:

Old Newspaper

Clean up towels

Water

Black Light

Masking tape

Blood Spatter Kit Refill Contents

Material Safety Data Sheet

Student Data Sheets for 5 experiments

1. Distance Effect on Blood Spatter

2. Distance Effect on Blood Spatter Graph

3. Identifying Distance of Travel

4. Experimenting with Blood Spatter Angles

5. Measuring Blood Spatter

Micro Tip Pipette

Filter Paper

Simulated Blood Solution

Simulated Hemoglobin Solution

Luminol Powder
Sodium Perborate
Sodium Carbonate

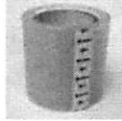
Product 26/49

[Previous](#) | [Return to the Product List](#) | [Next](#)

Customers who bought this product also purchased...



I.D. Print Inkless Retabs
\$25.00



Fingerprint Lifting Tape (Roll)
\$5.95



Footprint Casting Powder, Bulk Pack
\$87.95

Information

- [Shipping & Returns](#)
- [Privacy Notice](#)
- [Conditions of Use](#)
- [Contact Us](#)
- [Site Map](#)
- [Discount Coupons](#)
- [Newsletter Unsubscribe](#)

Business Address

Crime Scene
3440 N 16th St, Ste #4
Phoenix, AZ 85016
Voice (623) 565-8573
Fax (602)-274-7280



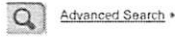
Copyright © 2012 [Crime Scene](#). Powered by [Zen Cart](#).



Crime Scene sells forensic supplies and detective clothing to the public. We are also home to an interactive detective game. | [View Crime Scene Cases](#) |

Currency: US Dollar

Search for...



Customer service: 1-823-565-8573

Your cart is empty



[New Products](#) [Specials](#) [Featured products](#) [My Account](#) [Contact us](#)

[Log In](#) or [Register](#)

Footprint Casting Powder, Bulk Pack

Order today for delivery tomorrow. We accept Visa, Mastercard, Amex, Discover, Paypal and money orders. We also accept purchase orders from schools and government agencies. Add **free evidence bag gift wrap**.



Click image to enlarge

Price: **\$87.95**

Model: TRXT-20BB

Recommend this on Google

Like

Send

Sign Up to see what your friends like.

Add to Cart:

ADD TO CART +

Product description

Make evidence impressions on the spot with no mess and no hassle. Footprint Casting Powder is a diestone dental stone material that gives a green color, highly detailed impression with minimum setting time. Just add water and mix in the self-seal bag. We also carry footprint casting frames. [Details here](#).

Includes 20 bags (1.5 lbs per bag) of casting mix, casting sealant spray and directions.

Features / Benefits Include:

- Footprint Casting Powder provides superior detail reproduction and durability.
- It has a higher compression strength (18,000 psi) than other casting material (8,000 - 14,000 psi).
- Footprint Casting Powder also has less expansion (00.09% vs, 0.11%)
- Indicator pigments let you know when it is ready to use.
- Setting time is approximately 12 to 15 minutes.
- The kit is easy to store and easy to carry.
- There is no need to repackage bulk material and no worry about moisture.

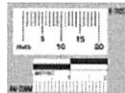
Product 6/11

[Previous](#) | [Return to the Product List](#) | [Next](#)

Customers who bought this product also purchased...



[Phenolphthalein Presumptive Blood Test Kit](#)
\$39.90



[20mm Adhesive Photo Scales](#)
\$8.50



[Gunshot Residue Collection Kit](#)
\$7.49

Information

- [Shipping & Returns](#)
- [Privacy Notice](#)
- [Conditions of Use](#)
- [Contact Us](#)
- [Site Map](#)
- [Discount Coupons](#)
- [Newsletter Unsubscribe](#)

Business Address

Crime Scene
3440 N 16th St, Ste #4
Phoenix, AZ 85016
Voice (623) 565-8573
Fax (602)-274-7280



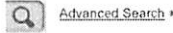
Copyright © 2012 Crime Scene. Powered by Zen Cart.



Crime Scene sells forensic supplies and detective clothing to the public. We are also home to an interactive detective game. | [View Crime Scene Cases](#) |

Currency: US Dollar

Search for...



Customer service: 1-823-565-8573



Your cart is empty

[New Products](#) [Specials](#) [Featured products](#) [My Account](#) [Contact us](#)

[Log In](#) or [Register](#)

Tire and Footprint Casting Frames

Order today for delivery tomorrow. We accept Visa, Mastercard, Amex, Discover, Paypal and money orders. We also accept purchase orders from schools and government agencies. **Add free evidence bag gift wrap.**



Click image to enlarge

Starting at: **\$27.00**

Model: CASTINGFRAME

Recommend this on Google

Sign Up to see what your friends like.

Casting Frames

Footprint Casting Frame (4-1105) (\$27.00)

Add to Cart:

Product description

These are adjustable aluminum frames used to contain the flow of dental stone when making casts of footwear or tire impressions at the scene. Unique overlap clips allow eight inches or more of expansion. Each frame includes two "U" shaped bars, with two connector slides. Simply remove the connector slides when done, and the unit is a small, easily transportable item. Each frame can be used several times.

Dimensions:

- Footprint frame dimensions: 7 1/4" x 10-18"
- Tire frame dimensions: 12" x 15-28"

Choose from Footprint or Tire Casting Frame using the pull-down menu.

Product 5/11

[Previous](#) | [Return to the Product List](#) | [Next](#)

Customers who bought this product also purchased...



[Cocaine ID Swabs](#)
\$15.00



[Sexual Assault Kit, Suspect-Clear](#)
\$40.95- \$5.95



[Fingerprint Cards, Applicant FD-258](#)
\$25.00

Information

- [Shipping & Returns](#)
- [Privacy Notice](#)
- [Conditions of Use](#)
- [Contact Us](#)
- [Site Map](#)
- [Discount Coupons](#)
- [Newsletter Unsubscribe](#)

Business Address

Crime Scene
3440 N 16th St, Ste #4
Phoenix, AZ 85016
Voice (623) 565-8573
Fax (602)-274-7280



Copyright © 2012 [Crime Scene](#). Powered by [Zen Cart](#).