

# Vlab Academic – Access on the Web with your PC/Mac/Smartphone/Tablet

**Goal** – access to many academic applications from on or offsite using a Mac, PC or smartphone or tablet.

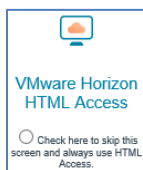
## Three Access Options

1. **\*New\*** Log in directly from a web browser
2. Download VMware on PC or Mac
3. Install free app in smartphone or tablet

## Examples of Accessible Clinical Applications

- **General Open Vlabs** – Adobe, Assistive applications, Claro Apps, Dragon, Echo, Kurzweil, JAWS, AppXtender, EndNote, Maple, Office, RStudio, SAS, SPSS, Stata, and many more.
- **Business College Vlabs** – Adobe, Arena, Creative Cloud, Digital editions, Office, Evergreen, EView, SPSS, Putty, SAP.
- **Education Vlabs** – Atlas.Ti, VLC, 7-zip, Adobe Reader, Adobe Flash, Facets, IBM AMOS 22, SPSS, IHMC Cmaptools, Inspiration 9, InspireData, Kidspiration 3, Paint.net, Quicktime 7, Shotcut, Winsteps, iTunes, VLC, NVivo.
- **Engineering Vlabs** – Adobe, AutoDesk Apps, ApsenTech, Bentley Software, SolidWorks, MSC.Adams, ASHRAE Psychrometrics, COMSOL, DipTrace, Eclipse for Java, Keil uVision, MATLAB, Minitab, MathCAD, Office, VisualStudio, WarGUI, WinEST
- **College of Arts and Letters Vlabs** – Adobe, Audacity, ArcGIS, ENVI, ERDAS, FragStats, Gauss, GeoDA, GeoGebra, Google Earth, GRASS GIS, QRS-II &GNE, Maple, Matlab, MikeTeX, MiniTab, Notepad++, Office, Python, Python Anaconda, Putty, QGIS, R, R Studio, SAS, SMath Studio, SPSS, Stata, TexMaker, TeXnicCenter, WinSCP, WinShell, Wolfram CDF Player, VLC

**Web Browser access** – log in directly from a web browser on any PC or Mac



1. Visit [vlab.utoledo.edu](http://vlab.utoledo.edu) on your browser (Safari, Chrome or Edge)
2. Click the second icon “VMware Horizon HTML Access”
3. Type your UTAD Username and Password, then click “Login”
4. Click the icon “Clinical Live” then wait a couple of seconds as you are logged in

**Note:** USB devices are **not available** when you log in via web browser.

**Download VMware on PC/MAC** – best for use on personal PC or Mac (or to update to the latest version)



1. Visit [vlab.utoledo.edu](http://vlab.utoledo.edu) on your browser (Safari, Chrome or Edge)
2. Click the first icon “Install VMware Horizon Client”
3. Scroll to “Windows” for PC or “Mac” then click “Go to downloads”. Click “Download”

Product	Release Date	
▼ VMware Horizon Client for Windows		
VMware Horizon Client for Windows	2017-03-16	<a href="#">Go to Downloads</a>
▼ VMware Horizon Client for Windows 10 UWP		
VMware Horizon Client for Windows 10 UWP for ARM-based devices	2017-03-16	<a href="#">Go to Downloads</a>
VMware Horizon Client for Windows 10 UWP for x86-based devices	2017-03-16	<a href="#">Go to Downloads</a>
▼ VMware Horizon Client for Mac		
VMware Horizon Client for Mac	2017-03-16	<a href="#">Go to Downloads</a>

4. When prompted, type this server name: **vlab.utoledo.edu**
5. Log into “Clinical Live” using your utad username and password (contact IT Help Desk for help)
6. **To Exit:** at the bottom left, click “Start” then “Log Off”

#### Install free app on PAD/IPHONE/ANDROID

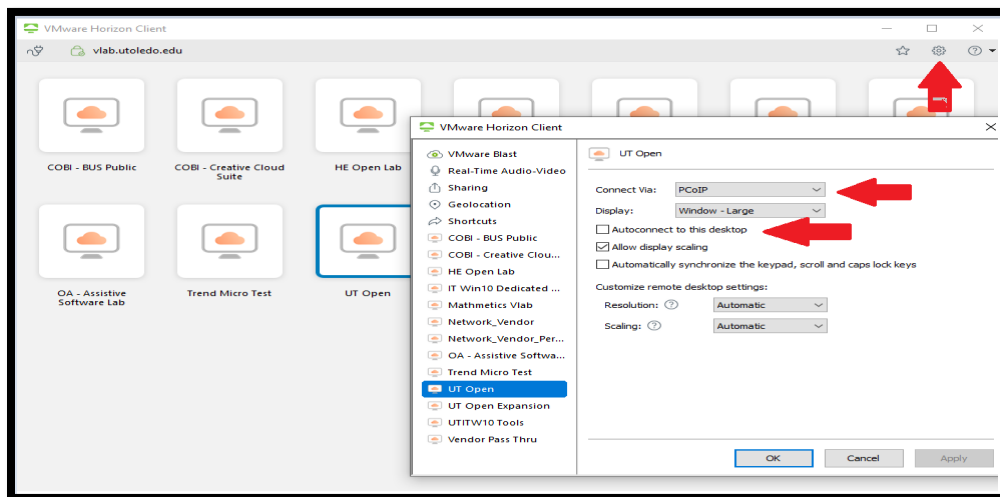


1. Go to the App Store/Play Store: search for “VMware”. Download “VMware Horizon Client”
2. Touch “VMware View”. Type in the connection server: [vlab.utoledo.edu](http://vlab.utoledo.edu)
3. Log into “Clinical Live” using your utad username and password
4. Tap the circular icon on your screen to pull up your virtual keyboard/navigation arrows
5. To Exit: Click “Start” on the bottom left, then “Log Off”

## TROUBLESHOOTING VLAB

### My PC/Mac screen spins but doesn't connect to Vlab – Change Connection type to “PCoIP”

1. Launch Vlab and log in using utad credentials (call IT Help Desk, if you don't have log-in access)
2. When you see “UT Open”, click the “settings” (gearwheel icon on the far right)
3. On “Connect Via”, change it to “PCoIP”. Click “ok” to save this setting. Close this window



4. Double click Clinical Live to connect to vlab
5. If that still fails, follow the steps again and uncheck “Autoconnect to this desktop”

**Vlab is flashing or taking over all my computer screens** – switch display to “Fullscreen”

1. Launch Vlab and log in using utad credentials (call IT Help Desk, if you don't have log-in access)
2. When you see “UT Open”, click the “settings” (gearwheel icon on the far right)
3. Under “Display”, change it to “Fullscreen”. Click “ok” to save this setting. Close this window