

RESEARCH ARTICLE

Open Access

# Suppression of protein kinase C theta contributes to enhanced myogenesis *In vitro* via IRS1 and ERK1/2 phosphorylation

Joseph S Marino<sup>1,3</sup>, Terry D Hinds Jr.<sup>1</sup>, Rachael A Potter<sup>2</sup>, Eric Ondrus<sup>2</sup>, Jeremy L Onion<sup>2</sup>, Abigail Dowling<sup>1</sup>, Thomas J McLoughlin<sup>2</sup>, Edwin R Sanchez<sup>1</sup> and Jennifer W Hill<sup>1\*</sup>

## Abstract

**Background:** Differentiation and fusion of skeletal muscle myoblasts into multi-nucleated myotubes is required for neonatal development and regeneration in adult skeletal muscle. Herein, we report novel findings that protein kinase C theta (PKC $\theta$ ) regulates myoblast differentiation via phosphorylation of insulin receptor substrate-1 and ERK1/2.

**Results:** In this study, PKC $\theta$  knockdown (PKC $\theta^{\text{shRNA}}$ ) myotubes had reduced inhibitory insulin receptor substrate-1 ser1095 phosphorylation, enhanced myoblast differentiation and cell fusion, and increased rates of protein synthesis as determined by [<sup>3</sup>H] phenylalanine incorporation. Phosphorylation of insulin receptor substrate-1 ser632/635 and extracellular signal-regulated kinase1/2 (ERK1/2) was increased in PKC $\theta^{\text{shRNA}}$  cells, with no change in ERK5 phosphorylation, highlighting a PKC $\theta$ -regulated myogenic pathway. Inhibition of PI3-kinase prevented cell differentiation and fusion in control cells, which was attenuated in PKC $\theta^{\text{shRNA}}$  cells. Thus, with reduced PKC $\theta$ , differentiation and fusion occur in the absence of PI3-kinase activity. Inhibition of the ERK kinase, MEK1/2, impaired differentiation and cell fusion in control cells. Differentiation was preserved in PKC $\theta^{\text{shRNA}}$  cells treated with a MEK1/2 inhibitor, although cell fusion was blunted, indicating PKC $\theta$  regulates differentiation via IRS1 and ERK1/2, and this occurs independently of MEK1/2 activation.

**Conclusion:** Cellular signaling regulating the myogenic program and protein synthesis are complex and intertwined. These studies suggest that PKC $\theta$  regulates myogenic and protein synthetic signaling via the modulation of IRS1 and ERK1/2 phosphorylation. Myotubes lacking PKC $\theta$  had increased rates of protein synthesis and enhanced myotube development despite reduced activation of the canonical anabolic-signaling pathway. Further investigation of PKC $\theta$  regulated signaling may reveal important interactions regulating skeletal muscle health in an insulin resistant state.

**Keywords:** Protein kinase C, Myoblast differentiation, Myoblast fusion, Insulin receptor substrate

## Background

Skeletal muscle development and the regeneration of adult muscle tissue requires the completion of myogenesis: activation, proliferation, differentiation, and fusion of muscle specific stem cells, known as satellite cells [1]. Myogenesis is highly regulated by cellular, molecular, and particularly hormonal signals that orchestrate cell

mobility, cell contact, hormone sensitivity and the expression of muscle regulatory factors (i.e. MyoD, Myf5, myogenin, and MRF5) [2,3].

Hormone signaling is critical in the regulation of skeletal muscle mass. Mitogenic signals from insulin and insulin-like growth factor (IGF-1) converge on the insulin receptor substrate (IRS) to regulate cell metabolism, protein synthesis, cell survival, and cell growth by activating phosphoinositide 3-kinase (PI3-kinase)/protein kinase B (PKB or AKT) and extracellular signal-regulated kinase (ERK) signaling pathways [4-9]. However, the

\* Correspondence: JenniferW.Hill@utoledo.edu

<sup>1</sup>Center for Diabetes and Endocrine Research, Department of Physiology and Pharmacology, University of Toledo College of Medicine, Toledo, OH 43614, USA

Full list of author information is available at the end of the article

kinases and the mechanisms that regulate signal transduction through these cascades, as well as the result on myogenesis, are not completely characterized. Specifically, PI3-kinase is a primary regulator of anabolic and catabolic responses that contribute to the maintenance of skeletal muscle mass, and is activated by IRS1 [10,11]. Importantly, the theta isoform of the protein kinase C family (PKC $\theta$ ) phospho-inhibits insulin receptor substrate-1 (IRS1) on ser1101 (homologous to ser1095 mouse numbering), suppressing downstream activation of AKT [12], a target of PI3-kinase and mediator of anabolic and catabolic signaling [10,11]. PKC $\theta$  also regulates skeletal muscle regeneration *in vivo* [13] and myogenesis *in vitro* [14-16], albeit through mechanisms that are not completely understood. Therefore, further investigation into the cellular signaling dynamics regulated by PKC $\theta$  will advance our understanding of the cellular and molecular regulation of the myogenic program.

PKC molecules are intracellular serine/threonine kinases expressed by a variety of cell types involved in diverse functions depending on their structure. PKC molecules are classified as either 1) conventional, containing Ca<sup>2+</sup> and diacylglycerol/phorbol binding domains, 2) novel, missing the Ca<sup>2+</sup> binding domain and 3) atypical, lacking the Ca<sup>2+</sup> and diacylglycerol binding domains [17]. PKC $\theta$  is a member of the novel family of PKC molecules and is predominantly expressed in hematopoietic [18] and skeletal muscle cells [19].

In skeletal muscle, PKC $\theta$  regulates, insulin sensitivity [20-22], muscle cell proliferation and differentiation [14,16,23], skeletal muscle regeneration [13], and expression of acetylcholine receptors in the neuromuscular junction [24-26]. Nonetheless, the contribution of PKC $\theta$  to myogenesis is controversial. Studies using human [23] and chick [15] primary muscle cells showed that PKC $\theta$  expression decreases throughout differentiation, a time associated with increased muscle creatine kinase [15] and desmin [14] protein levels, both of which support differentiation and myotube formation. PKC $\theta$  was not detected in mouse embryonic myoblasts, which were resistant to the inhibitory effects of phorbol esters and transforming growth factor beta (TGF- $\beta$ ) [27,28] on myotube formation [29]. Genetic forced expression of PKC $\theta$  in mouse embryonic myoblasts prevented myotube formation in the presence of TGF $\beta$  and phorbol ester [29]. Moreover, mice with dystrophic muscle have improved skeletal muscle regeneration when PKC $\theta$  is globally absent [13]. Taken together, these studies support that PKC $\theta$  is a negative regulator of myogenesis and skeletal muscle regeneration. Alternatively, primary muscle cell cultures derived from global PKC $\theta$  knockout mice and muscle-specific PKC $\theta$  kinase-dead mice have demonstrated a requirement for PKC $\theta$  in myogenesis and regeneration [16]. Lastly, in C<sub>2</sub>C<sub>12</sub> muscle cells, PKC $\theta$  expression

remained constant and overexpression of PKC $\theta$  did not impair differentiation [30].

The overall objective of this study was to investigate how PKC $\theta$  regulates cell signaling events that contribute to the advancement of the myogenic program. We hypothesized that PKC $\theta$  negatively regulates the myogenic program via IRS1. To test this hypothesis we used a short hairpin-RNA (shRNA) to specifically knockdown PKC $\theta$  expression in C<sub>2</sub>C<sub>12</sub> cells (PKC $\theta$ <sup>shRNA</sup>), an established cell line for investigating the myogenic program [8,30-32]. We then investigated how reduced PKC $\theta$  affected signaling through the classical insulin signaling pathway in addition to the affect on differentiation and fusion of muscle myoblasts. Our data reveal a PKC $\theta$ -regulated myogenic pathway involving serine phosphorylation of IRS1 and phosphorylation of ERK1/2 in the control of myoblast differentiation that enhances our understanding of how PKC $\theta$  contributes to myogenic signaling.

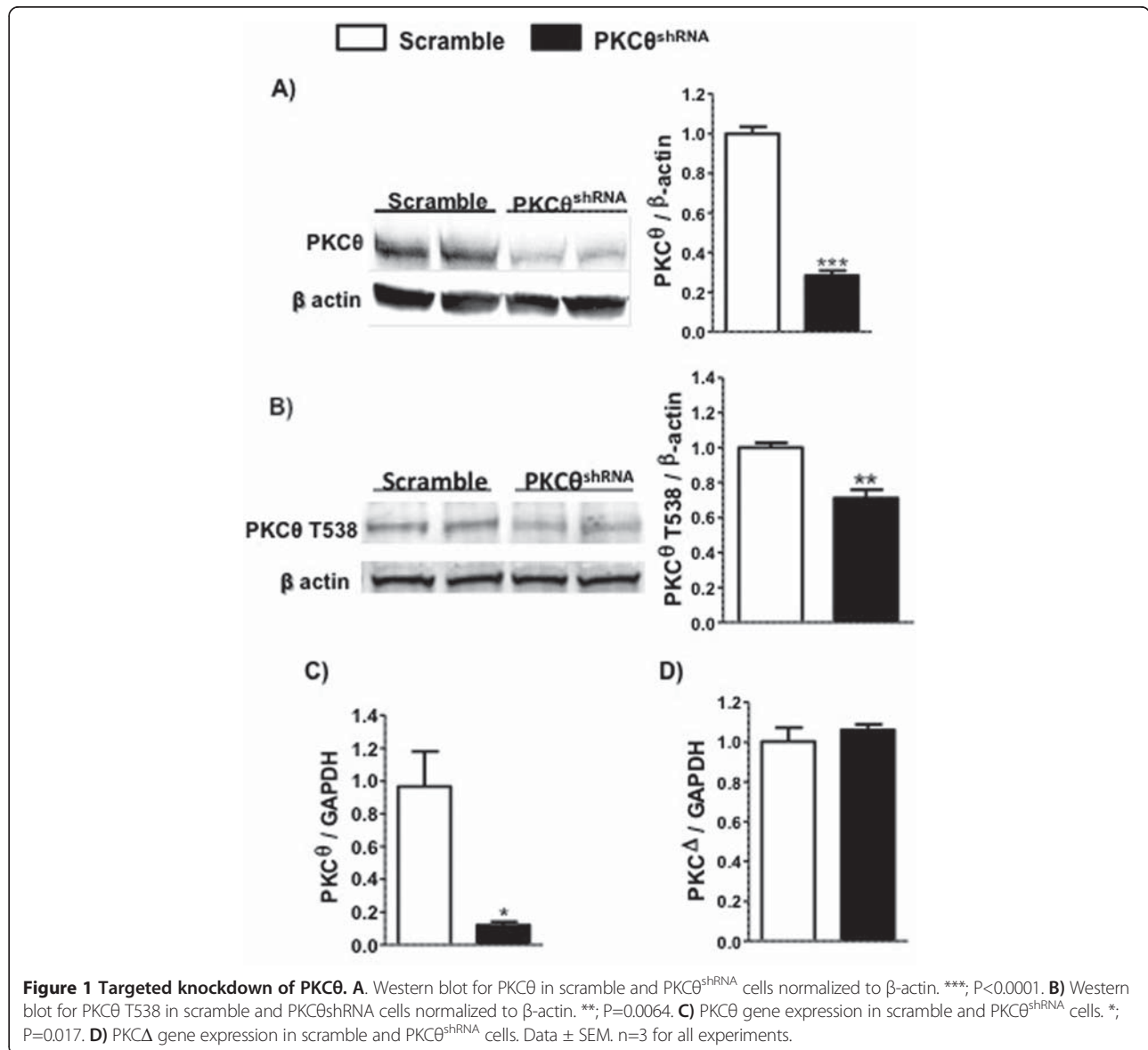
## Results and discussion

### Knockdown of PKC $\theta$ in C<sub>2</sub>C<sub>12</sub> cells

To investigate the mechanism by which PKC $\theta$  regulates muscle cell differentiation and fusion, a stable PKC $\theta$  knockdown (PKC $\theta$ <sup>shRNA</sup>) cell line using C<sub>2</sub>C<sub>12</sub> mouse muscle cells (myoblasts) was generated by transfecting with a PKC $\theta$  shRNA. Transfection reduced PKC $\theta$  protein and gene expression by approximately 80% compared to cells transfected with scramble oligonucleotides (scramble) (Figures 1A,C). Additionally, phosphorylation of PKC $\theta$  was significantly reduced in PKC $\theta$ <sup>shRNA</sup> myoblasts (Figure 1B). Gene expression of PKC delta (PKC $\Delta$ ), also a member of the novel family of PKC molecules, was not different between PKC $\theta$ <sup>shRNA</sup> and scramble myoblasts (Figure 1D), indicating specificity of the shRNA.

### PKC $\theta$ is a negative regulator of myogenesis in C<sub>2</sub>C<sub>12</sub> muscle cells

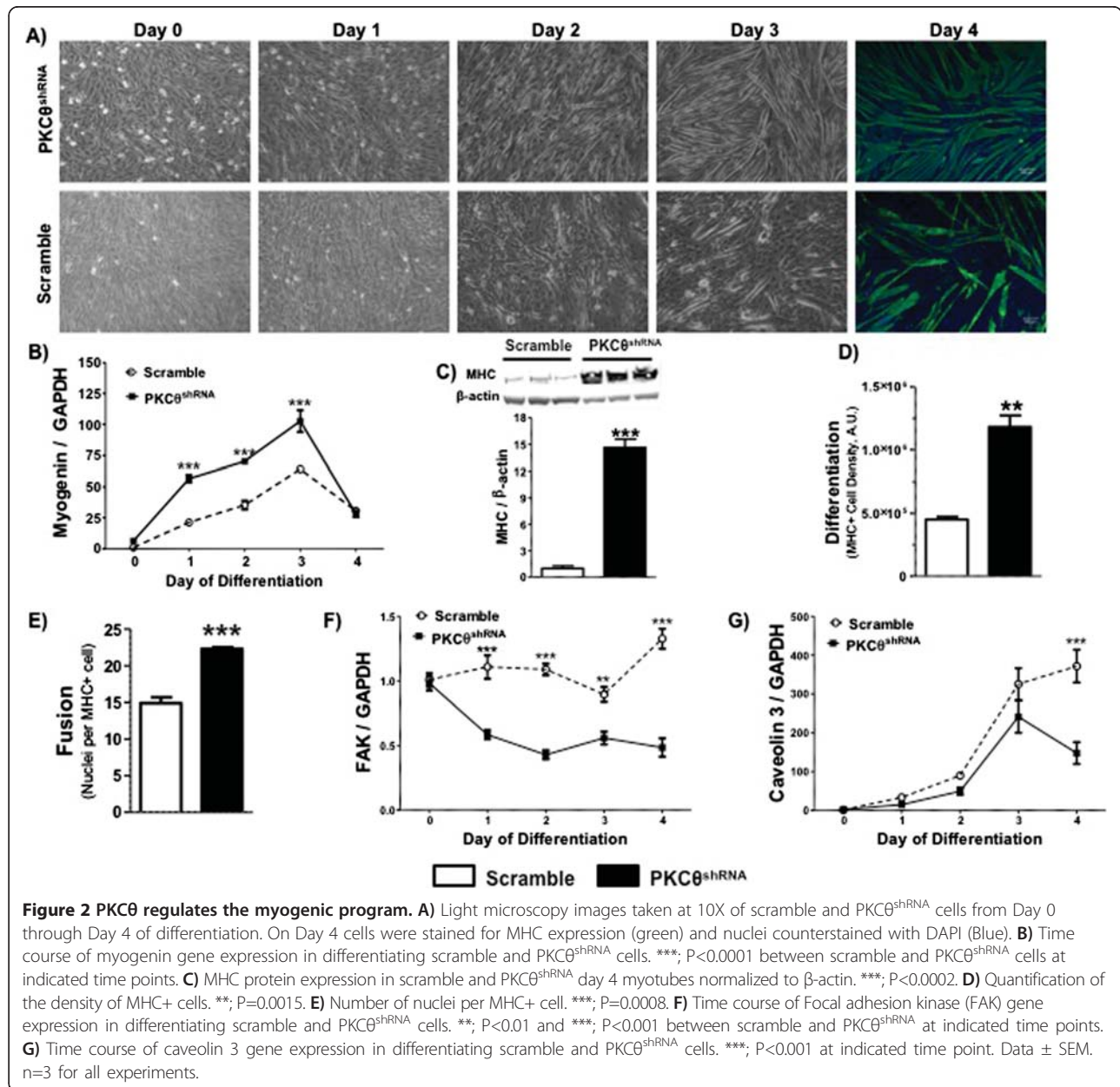
To determine how the loss of PKC $\theta$  affects differentiation and fusion of myoblasts, PKC $\theta$ <sup>shRNA</sup> and scramble cells were exposed to differentiation media for 4 days. On day 2, PKC $\theta$ <sup>shRNA</sup> cells formed a greater number of tube-like structures compared to scramble cells (Figure 2A, Day 2 pictures). This is in agreement with increased myogenin transcript levels from day 1 through day 3 of differentiation in PKC $\theta$ <sup>shRNA</sup> cells (Figure 2B). On the fourth day, cells were stained for myosin heavy chain (MHC) to identify differentiated cells and counterstained with DAPI to identify nuclei (Figure 2A, Day 4). MHC protein expression via western blot (Figure 2C) and immuno staining (Figure 2D) were markedly increased, approximately 15 fold and 2.5 fold respectively, in PKC $\theta$ <sup>shRNA</sup> compared to scramble cultures. In addition, the number of nuclei per



MHC+ cell, an indication of cell fusion, was 20% greater in PKCθ<sup>shRNA</sup> cultures (Figure 2E), indicating PKCθ is a myogenic suppressor of C<sub>2</sub>C<sub>12</sub> myoblast differentiation and fusion.

Focal adhesion kinase (FAK) and caveolin 3 are necessary for myoblast fusion and *in vivo* regeneration [33,34]. Here, the gene expression of FAK (Figure 2F) and caveolin 3 (Figure 2G) were analyzed through 4 days of differentiation. Interestingly, mRNA levels of FAK remained lower in PKCθ<sup>shRNA</sup> compared to scramble cells from day 1 through day 4 of differentiation (Figure 2F). Caveolin 3 mRNA levels remained similar between cell types from day 1 through day 3 of differentiation. At day 4 of differentiation, caveolin 3 levels dropped in PKCθ<sup>shRNA</sup> myotubes while increasing slightly in the scramble culture resulting in a significant difference (Figure 2G).

A decrease in FAK protein expression was reported following 96 hours of differentiation [34], which supports our results. Furthermore, FAK regulates the expression of caveolin 3 [34]. Therefore, reduced expression of caveolin 3 reported here might be the result of down-regulated FAK. The lower expression levels of both FAK and caveolin 3 in our PKCθ<sup>shRNA</sup> cells following 4 days of differentiation support the acceleration of the fusion process compared to scramble cultures. It is possible that FAK expression peaks in PKCθ<sup>shRNA</sup> cells at an earlier time point than analyzed here, propagating accelerated myotube development. Alternatively, muscle cells derived from global PKCθ knockout mice (PKCθ<sup>-/-</sup>) have impaired myogenic properties *in vitro* associated with reduced FAK and caveolin 3 [16]. Importantly, expression levels of FAK and caveolin 3 were analyzed after 2 days in differentiation



conditions [16], while cells in this study were differentiated for 4 days prior to analysis. Indeed, primary cultures derived from PKCθ<sup>-/-</sup> display impaired fusion *in vitro* [16], which is in contrast to our data here, derived from C<sub>2</sub>C<sub>12</sub> cells in which shRNA was used to knockdown PKCθ expression. Although differences between a primary culture and cell line may contribute to the desperate findings, the *in vivo* milieu is complex and dynamic, and cellular interactions between inflammatory and skeletal muscle cells, two sources of PKCθ [18,19], may promote changes in cellular function that alter *ex vivo* cellular dynamics. Inflammatory cells play an integral role in regulating skeletal muscle size [35].

Primary mouse muscle cells isolated from skeletal muscle PKCθ kinase-dead mice also have impaired myogenic properties and regeneration *in vivo* [16], contrary to results presented in this study. Importantly, PKCθ translocates to the nucleus in cultured human muscle satellite cells [14] and other cell types where it directly associates with chromatin [36]. Also, in T-cells, PKCθ directly binds cytosolic proteins to regulate activity [37]. Together, these findings demonstrate that PKCθ has functions beyond its kinase activity including protein-protein interactions and protein-DNA interactions that remain to be completely explored in skeletal muscle. These functions of PKCθ may explain the contradictory



results obtained with our model compared to other models, which rely on substrate binding and availability [16]. Indeed, mice with muscular dystrophy and the additional global null mutation for PKC $\theta$ , have enhanced skeletal muscle regeneration [13], suggesting a negative role for PKC $\theta$  in the regulation of myogenesis. Further work exploring the cellular and molecular interactions of skeletal muscle PKC $\theta$  across multiple models is warranted to more completely understand its myogenic regulatory role.

#### **Lack of PKC $\theta$ enhances protein synthesis apart from classical IRS1 signaling**

Our data indicates that PKC $\theta$  negatively regulates the differentiation and fusion of myoblasts. Because PKC $\theta$  inhibits IRS1 through serine phosphorylation and this results in the downstream suppression of AKT [12], we tested the hypothesis that PKC $\theta$  regulates myoblast differentiation and fusion through altered IRS1 signaling. IRS1 signal transduction regulates cell growth and protein synthesis through PI3-kinase/AKT activation and the MAPK cascade involving MEK1/2/ERK signaling [5,6,8,9,38,39]. IRS1 serine phosphorylation of specific residues inhibits downstream signaling by preventing IRS1 tyrosine phosphorylation [4,12,22,40]. Specifically, phosphorylation of serine1095 (referenced as 1101 human numbering) by PKC $\theta$  impairs insulin signaling [12]. In support of our hypothesis, PKC $\theta^{\text{shRNA}}$  cells had elevated rates of protein synthesis determined by [ $^3\text{H}$ ] phenylalanine incorporation (Figure 3A), accompanied by reduced IRS1 serine1095 phosphorylation following 4 days of differentiation (Figure 3C). However, myogenic events are likely independent of insulin receptor (IR) signaling because its tyrosine phosphorylation was lower in PKC $\theta^{\text{shRNA}}$  cells (Figure 3B) despite increased differentiation, fusion, and protein synthesis (Figures 2 and 3A). Furthermore, IRS1 phosphorylation at tyrosine 1222 was reduced in PKC $\theta^{\text{shRNA}}$  myotubes (Figure 3C). Moreover, phosphorylation of AKT, a kinase activated in response to IRS1/PI3-kinase signaling [4,41], was not different between cell types at serine 473, however was reduced in PKC $\theta^{\text{shRNA}}$  myotubes at threonine 308 (Figure 3D). Lastly, phosphorylation of mammalian target of rapamycin (mTOR) at serine 2448, a downstream target of AKT, was also reduced in PKC $\theta^{\text{shRNA}}$  day 4 myotubes (Figure 3E). Collectively, our protein synthesis and immunoblot data suggests involvement of a mechanism other than the canonical IRS1/PI3-kinase/AKT signaling pathway in promoting differentiation, fusion and protein synthesis in PKC $\theta^{\text{shRNA}}$  cells.

MAPKs participate in the regulation of a plethora of cellular functions, including the proliferation and differentiation of muscle cells and the modulation of IRS1 signaling. Specifically, ERK1/2 expression increases during

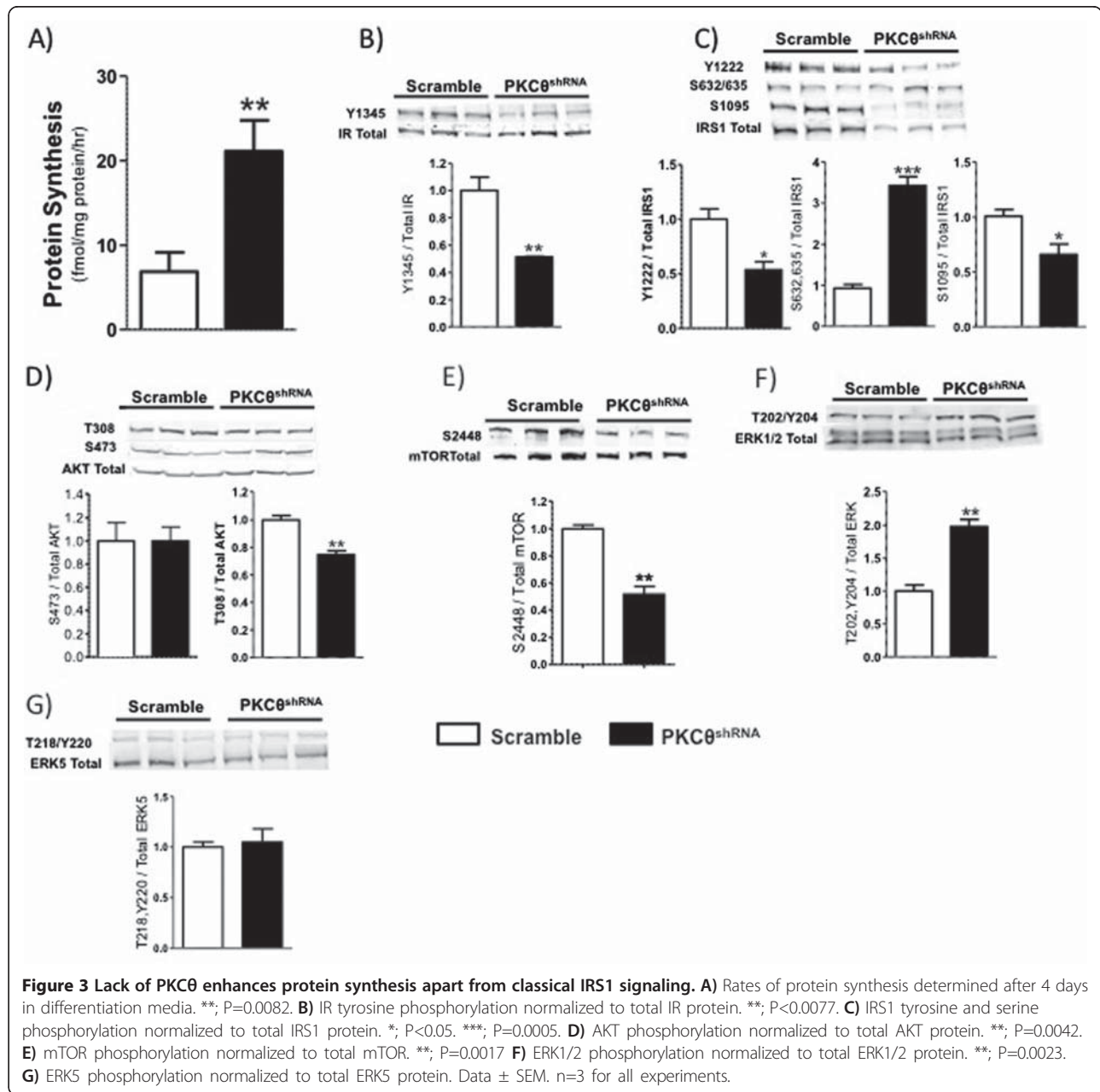
differentiation of C<sub>2</sub>C<sub>12</sub> cells [5,42] and permits the expression of myosin heavy chain [32]. Furthermore, ERK5 regulates myogenesis in a pathway independent of that, which activates MyoD, and MEF2 regulated genes [8]. Moreover, MEK1/2 is a positive regulator of the muscle specific transcription factor MyoD whose expression is required for the initiation of myoblast differentiation [5]. ERK also reciprocally signals to IRS1 [4,40,43,44]. In 3T3-L1 cells, IRS1 serine 636/639 phosphorylation causes IRS1 degradation [43] which is dependent on MEK1/2-induced ERK activation in human skeletal muscle cells [45]. Finally, in myeloma cells, ERK is phosphorylated through an IRS1-dependent mechanism [44]. In this study, total IRS1 protein levels were markedly reduced in PKC $\theta^{\text{shRNA}}$  cells together with increased phosphorylation of serine 632/635 (mouse numbering homologous to human 636/639) (Figure 3C) in day 4 myotubes, suggesting ERK-dependent signaling. As anticipated, ERK1/2 phosphorylation was increased in PKC $\theta^{\text{shRNA}}$  cells (Figure 3F). While ERK5 has been demonstrated to also regulate fusion of C<sub>2</sub>C<sub>12</sub> muscle cells [8], a difference in ERK5 phosphorylation between PKC $\theta^{\text{shRNA}}$  and scramble cultures was not detected (Figure 3G). While phosphorylation sites on ERK5 other than those analyzed here contribute to cell growth and survival in other cell types, these sites have been shown regulate mitotic activity [46,47] rather than terminal differentiation.

Interestingly, mTOR has been identified as a substrate for ERK [48], and mTOR is required for the fusion of differentiated skeletal muscle cells [31]. Skeletal muscle overexpression of Rheb increased mTOR mediated kinase events resulting in increased skeletal muscle size and protein translation independent of PI3-kinase and PKB (AKT) [49]. Here, mTOR phosphorylation was reduced in PKC $\theta^{\text{shRNA}}$  day 4 myotubes suggesting that mTOR is not a prime regulator of protein synthesis and myotube development in cells lacking PKC $\theta$  at the time point analyzed.

Our data together with prior reports [43,45] support that lack of PKC $\theta$  in C<sub>2</sub>C<sub>12</sub> myotubes promotes ERK1/2 mediated phosphorylation of IRS1 at serine 632/635. While this mechanism corroborates our finding of reduced total IRS1 protein (Figure 3C), further work is required to determine the mechanism by which these signaling events lead to enhanced protein synthesis. Nonetheless, these data show a novel pathway by which protein synthesis is increased despite reduced insulin receptor and AKT phosphorylation.

#### **PKC $\theta$ regulates IRS1 and ERK-mediated differentiation**

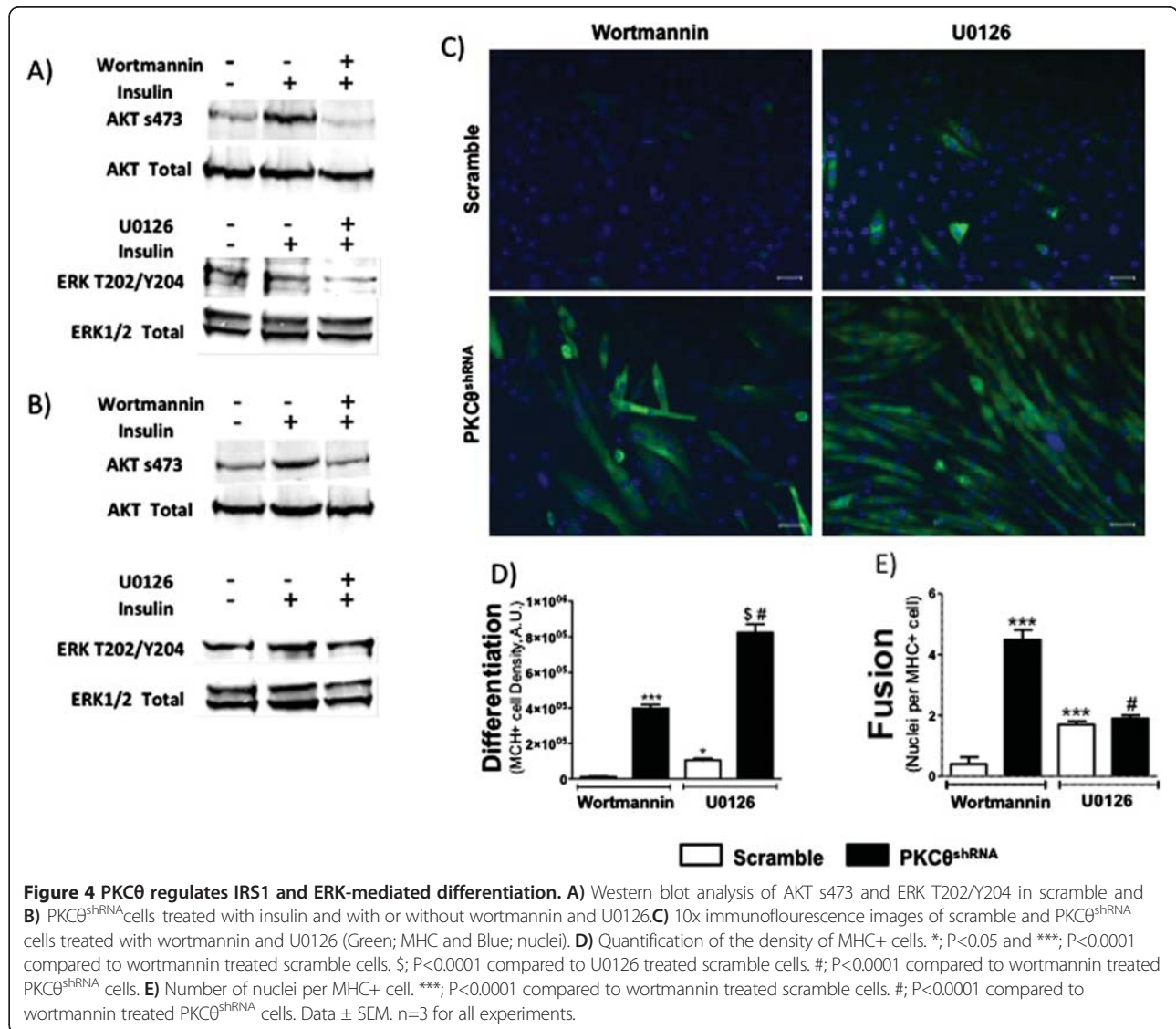
The purpose of these studies was to determine which kinases downstream of IRS1 mediate myoblast differentiation and fusion in PKC $\theta^{\text{shRNA}}$  cells. Scramble and PKC $\theta^{\text{shRNA}}$  cells were treated with the PI3-kinase inhibitor



wortmannin to attenuate PI3-kinase/AKT activation (Figure 4A) or the MEK1/2 inhibitor U0126 to inhibit ERK activity (Figure 4B). Wortmannin completely blocked the expression of MHC and subsequent cell fusion in scramble cells (Figures 4B,C,D), consistent with prior reports [50]. U0126 drastically reduced MHC expression and fusion in scramble cells compared to untreated cultures (Figure 2A compared to Figure 4A). However, expression of MHC was greater in U0126 compared to wortmannin treated scramble cells, indicating a greater degree of differentiation (Figures 4C,D). While the number of nuclei per MHC+ cell was statistically greater

in U0126 compared to wortmannin treated scramble cultures, fewer than 2 nuclei per MHC+ cell indicates markedly impaired fusion (Figure 4E).

Compared to wortmannin treated scramble cells, PKC $\theta^{shRNA}$  cells had increased differentiation and maintained the ability to fuse despite the presence of the PI3-kinase inhibitor (Figures 4B,C,D). Moreover, PKC $\theta^{shRNA}$  myotubes maintained higher rates of protein synthesis when treated with wortmannin compared to scramble cultures. Specifically, in agreement with figure 3A, protein synthesis was approximately 2-fold higher in PKC $\theta^{shRNA}$  compared to scramble day 4 myotubes exposed to vehicle



(4.8 vs. 9.2 fmol/mg protein/hr;  $P < 0.05$ ). In response to wortmannin, PKC $\theta$ <sup>shRNA</sup> protein synthesis rates remained 35% higher in PKC $\theta$ <sup>shRNA</sup> compared to scramble myotubes (3.17 vs. 4.90 fmol/mg protein/hr;  $P < 0.05$ ). Thus, PKC $\theta$ <sup>shRNA</sup> cells are able to complete the myogenic program independent of PI3-kinase signaling. These results support our protein expression data (Figure 3) in which reduced IR and AKT phosphorylation were found in PKC $\theta$ <sup>shRNA</sup> compared to scramble day 4 myotubes. Importantly, wortmannin treatment of PKC $\theta$ <sup>shRNA</sup> reduced differentiation to levels comparable to untreated scramble cultures (Figure 2A and Figure 4D). Therefore, while lack or PKC $\theta$  in C<sub>2</sub>C<sub>12</sub> myotubes is permissive for differentiation despite PI3-kinase inhibition, PI3-kinase signaling may be necessary to manifest the enhanced and accelerated myotube development observed in untreated cultures.

PKC $\theta$ <sup>shRNA</sup> cells treated with U0126 had markedly increased density of MHC+ cells (Figures 4C,D). Cell fusion, on the other hand, as determined by nuclei per MHC+ cell, was not different between PKC $\theta$ <sup>shRNA</sup> and scramble cells in the presence of the MEK inhibitor (Figures 4C,E). There was also no difference in protein synthesis rates between PKC $\theta$ <sup>shRNA</sup> and scramble myotubes treated with U0126 (4.2 vs. 5.0 fmol/mg protein/hr). shRNA-mediate reduction of PKC $\theta$  protected muscle cell differentiation in the presence of both PI3-kinase and MEK1/2 inhibition, but cell fusion was protected only in the presence of PI3-kinase inhibition. Take together, these data show that MEK1/2 signaling is required for cell fusion independently of differentiation and the expression of PKC $\theta$ . Furthermore, our data suggests a PKC $\theta$ -specific myogenic regulatory pathway involving IRS1 and ERK1/2

phosphorylation events in the regulation of muscle cell differentiation.

## Conclusions

The objective of this study was to investigate the contribution of skeletal muscle cell PKC $\theta$  to signaling events that regulate protein synthesis and myogenesis. Taken together, our data supports a model in which PKC $\theta$  regulates IRS1 and ERK1/2 signaling that controls myoblast differentiation and protein synthesis. Our findings that cell fusion is equally inhibited in scramble and PKC $\theta^{\text{shRNA}}$  myotubes treated with a MEK1/2 inhibitor suggests that MEK signaling is required for fusion independent of PKC $\theta$ . Additionally, abrogation of PKC $\theta$  promoted full completion of the myogenic program and increased rates of protein synthesis, despite reduced IR phosphorylation and maintained higher protein synthesis rates when treated with a PI3-kinase inhibitor. These findings demonstrate that PKC $\theta$  may be a viable therapeutic target to promote increases in protein synthesis and promote the maintenance of skeletal muscle health in conditions with impaired insulin signaling.

## Methods

### C<sub>2</sub>C<sub>12</sub> ShRNA infection

C<sub>2</sub>C<sub>12</sub> mouse muscle cells were provided by Francis X. Pizza (University of Toledo, Dept. of Kinesiology). To identify an siRNA to knockdown mouse PKC $\theta$  (mPKC $\theta$ ) a free Web-based tool (<http://www.genelink.com/sirna/shRNAi.asp>) was used to design a putative siRNA against the mPKC $\theta$  gene and to design oligonucleotides that encode a corresponding small hairpin RNA (shRNA) as previously described [51]. Origene was utilized to construct the shRNA plasmid with oligonucleotides: ACCGTTTC TTCGAATCGGTTTATCCAACCT and the homologous sequence. The mPKC $\theta$  shRNA construct was co-transfected together with vectors expressing gag-pol, REV and VSV-G into 293FT cells (Invitrogen) to generate a third generation lentiviral construct. Transfection was achieved using Lipofectamine 2000 (Invitrogen, Carlsbad, CA) using 100 ng total DNA per cm<sup>2</sup> of the growth plate or well. The supernatants were harvested and the cell debris was removed by centrifugation at 2000 g. After addition of polybrene (5 ng/ml, Sigma Chemical Co., St. Louis, MO), the supernatant was used to infect C<sub>2</sub>C<sub>12</sub> cells to establish a cell line that has mPKC $\theta$  stably down regulated (PKC $\theta^{\text{shRNA}}$ ) and a scramble shRNA control. After 72 hours the cells were selected by puromycin.

### Cell culture

Scramble and PKC $\theta^{\text{shRNA}}$  cells were seeded in tissue culture treated 6 well plates at equal density. They were grown in Hyclone DMEM (Fisher Scientific) supplemented with antibiotics and heat inactivated Hyclone

FBS (Fisher Scientific) at a final concentration of 10% (growth media). To promote myoblast differentiation and fusion, ~90% confluent cultures were serum deprived by switching to DMEM containing horse serum (Fisher Scientific) at a final concentration of 2% (differentiation media). The day that growth media was replaced with differentiation media is considered Day 0. Cells were maintained in differentiation media for 4 days and then processed for immunofluorescence or protein extraction. Media was changed every 48 hours except when indicated.

### PI3-kinase and MEK1/2 inhibition

Beginning on Day 0, scramble and PKC $\theta^{\text{shRNA}}$  cells were incubated in differentiation media supplemented with the PI3-kinase inhibitor wortmannin (Cayman Chemical) or the MEK1/2 inhibitor U0126 (Cayman Chemical) at a final concentration of 10  $\mu$ M. Media was changed daily with fresh inhibitor. Following 4 days of treatment, cells were processed for immunofluorescence. To confirm inhibition of PI3-kinase and MEK1/2 with wortmannin and U0126 respectively, confluent myoblasts were serum starved overnight and treated with 10nM insulin in the presence or absence of wortmannin or U0126. Cells were analyzed for AKT serine 473 phosphorylation and ERK threonine 202/tyrosine 204 phosphorylation as an indicator of drug effectiveness as described below.

### Immunofluorescence

Following 4 days of differentiation, wells were washed with PBS and fixed with cold 70% methanol/30% acetone for 10 min at room temperature. Cells were permeabilized with 0.05% triton-x 100 and blocked for 30 min at room temperature. Wells were incubated with anti-sarcomeric myosin heavy chain (MHC) MF20 (developed by Donald A. Fischman and obtained from the Developmental Studies Hybridoma Bank, The University of Iowa, Department of Biology, Iowa City, IA 52242) diluted 1:20 in blocking buffer for 2 hours at room temperature. Wells were washed and incubated with goat anti-mouse FITC secondary antibody (Invitrogen) diluted 1:200 in PBS for 30 min at room temperature. Cover slips were mounted with Vector Shield containing 4',6-diamidino-2-phenylindole (DAPI) (Vector Labs).

### Myoblast fusion

MHC positive (MHC+) cells were viewed at 10X magnification. To quantify cell fusion, 5 fields were viewed per well in a predetermined manner by a blinded investigator; starting from the center of the well, the stage was moved two complete fields to the right (field 1), two fields up (field 2), four fields to the left (field 3), two fields down (field 4), and 4 fields to the right (field 5). For each field, one picture of MHC+ cells and one



picture of DAPI labeled nuclei were taken and merged. A blinded investigator chose 10 MHC+ cells per field. The total number of nuclei were counted in 50 MHC+ cells per well and repeated in 3 wells for PKC $\theta$ <sup>shRNA</sup> and scramble cell lines. This yielded a total of 150 MHC+ cells analyzed for each cell line.

#### Myotube density

Density quantification (degree of MHC+ cell coverage of each well) using ImagePro Plus software was performed on images taken to determine myoblast fusion. The average MHC+ density (arbitrary units) across all 5 images per well was determined in 3 independent wells per condition and cell line.

#### Real time PCR

RNA was extracted using a commercially available kit according to the manufacturer's instructions (5 Prime). Following quantification using a Nanodrop (Thermo Fisher), 1  $\mu$ g of total RNA was reverse transcribed using a high capacity cDNA synthesis kit (Applied Biosystems). Real time PCR was performed on a Applied Biosystems Step One Plus system (Applied Biosystems). Fold change in mRNA levels was determined using  $2^{-\Delta\Delta}$  Ct with GAPDH as a control gene. Primer sequences used were as follows: GAPDH forward ATGTTTGTGATGGGTGTGAA, GAPDH reverse ATGCCAAAGTTGTCATGGAT, PKC $\theta$  forward TACATCCAGAAAAAGCCAACCA, PKC $\theta$  reverse TTCTGTCCGCCCATTTGTTCT, PKC $\Delta$  forward GCCAGAAGTCTCTGGGAGTG, PKC $\Delta$  reverse AAAGCTGCCCTTGGCAAGTA, myogenin forward CGCGATCTCCGCTACAGA, myogenin reverse TGGGACCGAAC TCCAGTG, PTK2 (focal adhesion kinase, FAK) forward GGTCCGACTGGAAACCAACA, FAK reverse GGCTGAAGCTTGACACCCCTC, caveolin 3 forward ACAGCTTCGACGGTGTATGG, and caveolin 3 reverse GTGGAACA CCCAGCAGTGTA.

#### Western blot

Cells were collected in lysis buffer (Final concentration: 1X RIPA buffer (Millipore), 1% triton-x100, 3% SDS) supplemented with Halt Protease and phosphatase inhibitors (Pierce). Cells were lysed by continuous, vigorous shaking for 20 min at 4°C. Lysates were centrifuged and supernatants used to determine protein concentration by BCA (Pierce).

SDS-PAGE and transfer were performed as previously described [35]. Proteins were blocked for 1 hour at room temperature. Membranes were washed with TBS-tween 20 (0.1%) (TBST) and incubated overnight at 4°C with either rabbit anti-mouse PKC $\theta$  (C-18; Santa Cruz) diluted 1:100, MHC MF20 (Developmental Studies Hybridoma Bank), or one of the following from Cell Signaling Technologies diluted 1:500: rabbit anti-mouse

PKC $\theta$  threonine 538, rabbit anti-mouse insulin receptor (IR) tyrosine 1345, mouse anti-mouse total IR, rabbit anti-mouse insulin receptor substrate 1 (IRS1) serine 1101, rabbit anti-mouse IRS1 serine 636/639, rabbit anti-mouse IRS1 tyrosine 1222, mouse anti total IRS1, rabbit anti-mouse AKT serine 473, rabbit anti-mouse threonine 308, mouse anti total AKT, rabbit anti-mouse mTOR serine 2448, mouse anti-mouse total mTOR, mouse anti-mouse ERK1/2 threonine202/tyrosine204, rabbit anti-mouse total ERK1/2, rabbit anti-mouse ERK5 threonine218/tyrosine 220, or rabbit anti-mouse total ERK5. Membranes probed for total PKC $\theta$  and MHC were normalized to mouse anti  $\beta$ -actin (Sigma Aldrich) diluted 1:15,000. After washing, the membrane was incubated for 2 hours at room temperature with species appropriate secondary antibodies (Licor) diluted 1:5000 in blocking buffer. Results were visualized using the Odyssey Imaging System (Licor). Band density was determined using Image J software and expressed as a fold change relative to scramble. Proteins probed for phosphorylation were normalized to respective total protein expression.

#### Protein synthesis

Following 4 days in differentiation media in the presence or absence of wortmannin or U0126 replaced daily, cells were incubated for 1 hour in serum-free DMEM containing 2.5 mM phenylalanine and 2.5  $\mu$ Ci/ml [<sup>3</sup>H] phenylalanine (Perkin Elmer, Boston, MA, USA). After incubation, cells were washed with ice-cold PBS (pH 7.5) and proteins were precipitated with 10% trichloroacetic acid (TCA). An aliquot of the culture medium was saved to determine the specific activity of the medium (c.p.m). TCA homogenates were incubated on ice for 30 minutes; plates were thoroughly scraped followed by centrifugation at 4500 g for 5 min. The supernatant was discarded and the TCA insoluble fraction was resuspended in 10% TCA, followed by centrifugation at 4500 g for 5 min. This was repeated four consecutive times, and the TCA insoluble fraction was homogenized in 0.15 M NaOH at 55°C for 1 hour with frequent vortex mixing. Aliquots of each sample were analyzed to determine the incorporated radioactivity (c.p.m) via liquid scintillation counting using a Beckman Coulter LS 6500. Protein content was analyzed using the DC protein assay (Bio-Rad laboratories, Hercules, CA). The rate of protein synthesis was calculated as femtomoles [<sup>3</sup>H] phenylalanine per milligram of protein per hour.

#### Statistical analysis

Statistical analyses were performed using Graph Pad Prism 5 software. Student's t-Test was used to determine differences between two means. One-Way ANOVA was used to determine differences when more than 2 variables were compared, followed by a Bonferroni multiple

comparisons post-hoc test. Analysis of gene expression between cell types across time was performed using a two-way ANOVA. Significance required an alpha level of  $p < 0.05$ .

#### Abbreviations

PKC $\theta$ : Protein kinase C theta; PKC $\Delta$ : Protein kinase C delta; IR: Insulin receptor; IRS1: Insulin receptor substrate-1; AKT: Also known as protein kinase B (PKB); ERK: Extracellular signal-related kinase; MEK1/2: Mitogen activated ERK kinase; PI3-kinase: Phosphoinositide 3-kinase; mTOR: Mammalian target of rapamycin; shRNA: Short hairpin RNA.

#### Competing interests

The authors declare no competing interests.

#### Authors' contributions

JSM contributed to experimental design, growth and treatment of cells, protein and gene expression analysis, and wrote the manuscript. TDH developed the scramble and PKC $\theta$  knockdown cell lines and contributed to experimental design. RAH performed protein synthesis experiments. EO and JLO contributed by quantifying cell differentiation and cell fusion. AD performed *in vitro* cell staining. TJM, ERS and JWH contributed to experimental design, interpretation of data and manuscript revising. JWH gave final approval for publication. All authors read and approved the final manuscript.

#### Acknowledgments

The authors thank Francis X. Pizza (UT-Main Campus) for technical advice, and Lance Stechschulte, and Leah Wuescher (UT-College of Medicine) for technical assistance. The authors would like to thank Susan Tsvitvse Arthur (UNC Charlotte) for critical review of this manuscript. This work was supported by the University of Toledo deArce-Koch award to JWH.

#### Author details

<sup>1</sup>Center for Diabetes and Endocrine Research, Department of Physiology and Pharmacology, University of Toledo College of Medicine, Toledo, OH 43614, USA. <sup>2</sup>Department of Kinesiology, University of Toledo, Toledo, OH 43606, USA. <sup>3</sup>Department of Kinesiology, Laboratory of Systems Physiology, University of North Carolina at Charlotte, Charlotte, NC 28223, USA.

Received: 11 March 2013 Accepted: 17 September 2013

Published: 21 September 2013

#### References

- Hawke TJ, Garry DJ: Myogenic satellite cells: physiology to molecular biology. *J Appl Physiol* 2001, **91**(2):534–551.
- Abmayr SM, Pavlath GK: Myoblast fusion: lessons from flies and mice. *Development* 2012, **139**(4):641–656.
- Sabourin LA, Rudnicki MA: The molecular regulation of myogenesis. *Clin Genet* 2000, **57**(1):16–25.
- Boura-Halfon S, Zick Y: Phosphorylation of IRS proteins, insulin action, and insulin resistance. *Am J Physiol Endocrinol Metab* 2009, **296**(4):E581–591.
- Gredinger E, Gerber AN, Tamir Y, Tapscott SJ, Bengal E: Mitogen-activated protein kinase pathway is involved in the differentiation of muscle cells. *J Biol Chem* 1998, **273**(17):10436–10444.
- Lawlor MA, Feng X, Everding DR, Sieger K, Stewart CE, Rotwein P: Dual control of muscle cell survival by distinct growth factor-regulated signaling pathways. *Mol Cell Biol* 2000, **20**(9):3256–3265.
- Madhala-Levy D, Williams VC, Hughes SM, Reshef R, Halevy O: Cooperation between Shh and IGF-I in promoting myogenic proliferation and differentiation via the MAPK/ERK and PI3K/Akt pathways requires Smo activity. *J Cell Physiol* 2012, **227**(4):1455–1464.
- Sunadome K, Yamamoto T, Ebisuya M, Kondoh K, Sehara-Fujisawa A, Nishida E: ERK5 regulates muscle cell fusion through Klf transcription factors. *Dev Cell* 2011, **20**(2):192–205.
- Le Grand F, Grifone R, Mourikis P, Houbbron C, Gigaud C, Pujol J, Maillot M, Pages G, Rudnicki M, Tajbakhsh S, et al: Six1 regulates stem cell repair potential and self-renewal during skeletal muscle regeneration. *J Cell Biol* 2012, **198**(5):815–832.
- Rommel C, Bodine SC, Clarke BA, Rossman R, Nunez L, Stitt TN, Yancopoulos GD, Glass DJ: Mediation of IGF-1-induced skeletal myotube hypertrophy by PI(3)K/Akt/mTOR and PI(3)K/Akt/GSK3 pathways. *Nat Cell Biol* 2001, **3**(11):1009–1013.
- Bodine SC, Stitt TN, Gonzalez M, Kline WO, Stover GL, Bauerlein R, Zlotchenko E, Scrimgeour A, Lawrence JC, Glass DJ, et al: Akt/mTOR pathway is a crucial regulator of skeletal muscle hypertrophy and can prevent muscle atrophy *in vivo*. *Nat Cell Biol* 2001, **3**(11):1014–1019.
- Li Y, Soos TJ, Li X, Wu J, Degennaro M, Sun X, Littman DR, Birnbaum MJ, Polakiewicz RD: Protein kinase C Theta inhibits insulin signaling by phosphorylating IRS1 at Ser(1101). *J Biol Chem* 2004, **279**(44):45304–45307.
- Madaro L, Pelle A, Nicoletti C, Crupi A, Marrocco V, Bossi G, Soddu S, Bouche M: PKC theta ablation improves healing in a mouse model of muscular dystrophy. *PLoS One* 2012, **7**(2):e31515.
- Boczan J, Biro T, Czifra G, Lazar J, Papp H, Bardos H, Adany R, Mechler F, Kovacs L: Phorbol ester treatment inhibits proliferation and differentiation of cultured human skeletal muscle satellite cells by differentially acting on protein kinase C isoforms. *Acta Neuropathol* 2001, **102**(1):55–62.
- Kim SS, Kim JH, Kim HS, Park DE, Chung CH: Involvement of the theta-type protein kinase C in translocation of myristoylated alanine-rich C kinase substrate (MARCKS) during myogenesis of chick embryonic myoblasts. *Biochem J* 2000, **347**(Pt 1):139–146.
- Madaro L, Marrocco V, Fiore P, Aulino P, Smeriglio P, Adamo S, Molinaro M, Bouche M: PKCtheta signaling is required for myoblast fusion by regulating the expression of caveolin-3 and beta1D integrin upstream focal adhesion kinase. *Mol Biol Cell* 2011, **22**(8):1409–1419.
- Meller N, Altman A, Isakov N: New perspectives on PKCtheta, a member of the novel subfamily of protein kinase C. *Stem Cells* 1998, **16**(3):178–192.
- Baier G, Telford D, Giampa L, Coggeshall KM, Baier-Bitterlich G, Isakov N, Altman A: Molecular cloning and characterization of PKC theta, a novel member of the protein kinase C (PKC) gene family expressed predominantly in hematopoietic cells. *J Biol Chem* 1993, **268**(7):4997–5004.
- Osada S, Mizuno K, Saido TC, Suzuki K, Kuroki T, Ohno S: A new member of the protein kinase C family, nPKC theta, predominantly expressed in skeletal muscle. *Mol Cell Biol* 1992, **12**(9):3930–3938.
- Turban S, Hajdudch E: Protein kinase C isoforms: mediators of reactive lipid metabolites in the development of insulin resistance. *FEBS Lett* 2011, **585**(2):269–274.
- Wang C, Liu M, Riojas RA, Xin X, Gao Z, Zeng R, Wu J, Dong LQ, Liu F: Protein kinase C theta (PKCtheta)-dependent phosphorylation of PDK1 at Ser504 and Ser532 contributes to palmitate-induced insulin resistance. *J Biol Chem* 2009, **284**(4):2038–2044.
- Yu C, Chen Y, Cline GW, Zhang D, Zong H, Wang Y, Bergeron R, Kim JK, Cushman SW, Cooney GJ, et al: Mechanism by which fatty acids inhibit insulin activation of insulin receptor substrate-1 (IRS-1)-associated phosphatidylinositol 3-kinase activity in muscle. *J Biol Chem* 2002, **277**(52):50230–50236.
- Boczan J, Boros S, Mechler F, Kovacs L, Biro T: Differential expressions of protein kinase C isozymes during proliferation and differentiation of human skeletal muscle cells *in vitro*. *Acta Neuropathol* 2000, **99**(2):96–104.
- Hilgenberg L, Yearwood S, Milstein S, Miles K: Neural influence on protein kinase C isoform expression in skeletal muscle. *J Neurosci* 1996, **16**(16):4994–5003.
- Miles K, Wagner M: Overexpression of nPKC theta is inhibitory for agrin-induced nicotinic acetylcholine receptor clustering in C2C12 myotubes. *J Neurosci Res* 2003, **71**(2):188–195.
- Kim S, Bondeva T, Nelson PG: Activation of protein kinase C isozymes in primary mouse myotubes by carbachol. *Brain Res Dev Brain Res* 2002, **137**(1):13–21.
- Burks TN, Andres-Mateos E, Marx R, Mejias R, Van Erp C, Simmers JL, Walston JD, Ward CW, Cohn RD: Losartan restores skeletal muscle remodeling and protects against disuse atrophy in sarcopenia. *Sci Transl Med* 2011, **3**(82):82ra37.
- Burks TN, Cohn RD: Role of TGF-beta signaling in inherited and acquired myopathies. *Skelet Muscle* 2011, **1**(1):19.
- Zappelli F, Willems D, Osada S, Ohno S, Wetsel WC, Molinaro M, Cossu G, Bouche M: The inhibition of differentiation caused by TGFbeta in fetal myoblasts is dependent upon selective expression of PKCtheta: a possible molecular basis for myoblast diversification during limb histogenesis. *Dev Biol* 1996, **180**(1):156–164.

30. Miles K, Wagner M: **Overexpression of nPKC theta is permissive for myogenic differentiation.** *J Cell Biochem* 2000, **79**(1):71–79.
31. Park IH, Chen J: **Mammalian target of rapamycin (mTOR) signaling is required for a late-stage fusion process during skeletal myotube maturation.** *J Biol Chem* 2005, **280**(36):32009–32017.
32. Meissner JD, Freund R, Krone D, Umeda PK, Chang KC, Gros G, Scheibe RJ: **Extracellular signal-regulated kinase 1/2-mediated phosphorylation of p300 enhances myosin heavy chain I/beta gene expression via acetylation of nuclear factor of activated T cells c1.** *Nucleic Acids Res* 2011, **39**(14):5907–5925.
33. Mermelstein CS, Martins ER, Portilho DM, Costa ML: **Association between the muscle-specific proteins desmin and caveolin-3 in muscle cells.** *Cell Tissue Res* 2007, **327**(2):343–351.
34. Quach NL, Biressi S, Reichardt LF, Keller C, Rando TA: **Focal adhesion kinase signaling regulates the expression of caveolin 3 and beta1 integrin, genes essential for normal myoblast fusion.** *Mol Biol Cell* 2009, **20**(14):3422–3435.
35. Marino JS, Tausch BJ, Dearth CL, Manacci MV, McLoughlin TJ, Rakyta SJ, Linsenmayer MP, Pizza FX: **Beta2-integrins contribute to skeletal muscle hypertrophy in mice.** *Am J Physiol Cell Physiol* 2008, **295**(4):C1026–1036.
36. Sutcliffe EL, Bunting KL, He YQ, Li J, Phetsouphanh C, Seddiki N, Zafar A, Hindmarsh EJ, Parish CR, Kelleher AD, et al: **Chromatin-associated protein kinase C-theta regulates an inducible gene expression program and microRNAs in human T lymphocytes.** *Mol Cell* 2011, **41**(6):704–719.
37. Bauer B, Krumbock N, Fresser F, Hochholdingner F, Spitaler M, Simm A, Uberall F, Schraven B, Baier G: **Complex formation and cooperation of protein kinase C theta and Akt1/protein kinase B alpha in the NF-kappa B transactivation cascade in Jurkat T cells.** *J Biol Chem* 2001, **276**(34):31627–31634.
38. Tureckova J, Wilson EM, Cappalonga JL, Rotwein P: **Insulin-like growth factor-mediated muscle differentiation: collaboration between phosphatidylinositol 3-kinase-Akt-signaling pathways and myogenin.** *J Biol Chem* 2001, **276**(42):39264–39270.
39. Rommel C, Clarke BA, Zimmermann S, Nunez L, Rossman R, Reid K, Moelling K, Yancopoulos GD, Glass DJ: **Differentiation stage-specific inhibition of the Raf-MEK-ERK pathway by Akt.** *Science* 1999, **286**(5445):1738–1741.
40. Mothe I, Van Obberghen E: **Phosphorylation of insulin receptor substrate-1 on multiple serine residues, 612, 632, 662, and 731, modulates insulin action.** *J Biol Chem* 1996, **271**(19):11222–11227.
41. Gual P, Le Marchand-Brustel Y, Tanti JF: **Positive and negative regulation of insulin signaling through IRS-1 phosphorylation.** *Biochimie* 2005, **87**(1):99–109.
42. Lee HJ, Bae GU, Leem YE, Choi HK, Kang TM, Cho H, Kim ST, Kang JS: **Phosphorylation of Stim1 at serine 575 via netrin-2/Cdo-activated ERK1/2 is critical for the promyogenic function of Stim1.** *Mol Biol Cell* 2012, **23**(7):1376–1387.
43. Hiratani K, Haruta T, Tani A, Kawahara J, Usui I, Kobayashi M: **Roles of mTOR and JNK in serine phosphorylation, translocation, and degradation of IRS-1.** *Biochemical and biophysical research communications* 2005, **335**(3):836–842.
44. Purushothaman A, Babitz SK, Sanderson RD: **Heparanase enhances the insulin receptor signaling pathway to activate extracellular signal-regulated kinase in multiple myeloma.** *J Biol Chem* 2012, **287**(49):41288–41296.
45. Bouzakri K, Roques M, Gual P, Espinosa S, Guebre-Egziabher F, Riou JP, Laville M, Le Marchand-Brustel Y, Tanti JF, Vidal H: **Reduced activation of phosphatidylinositol-3 kinase and increased serine 636 phosphorylation of insulin receptor substrate-1 in primary culture of skeletal muscle cells from patients with type 2 diabetes.** *Diabetes* 2003, **52**(6):1319–1325.
46. Diaz-Rodriguez E, Pandiella A: **Multisite phosphorylation of Erk5 in mitosis.** *J Cell Sci* 2010, **123**(Pt 18):3146–3156.
47. Inesta-Vaquera FA, Campbell DG, Tournier C, Gomez N, Lizcano JM, Cuenda A: **Alternative ERK5 regulation by phosphorylation during the cell cycle.** *Cell Signal* 2010, **22**(12):1829–1837.
48. Winter JN, Fox TE, Kester M, Jefferson LS, Kimball SR: **Phosphatidic acid mediates activation of mTORC1 through the ERK signaling pathway.** *Am J Physiol Cell Physiol* 2010, **299**(2):C335–344.
49. Goodman CA, Miu MH, Frey JW, Mabrey DM, Lincoln HC, Ge Y, Chen J, Hornberger TA: **A phosphatidylinositol 3-kinase/protein kinase B-independent activation of mammalian target of rapamycin signaling is sufficient to induce skeletal muscle hypertrophy.** *Mol Biol Cell* 2010, **21**(18):3258–3268.
50. Sarbassov DD, Peterson CA: **Insulin receptor substrate-1 and phosphatidylinositol 3-kinase regulate extracellular signal-regulated kinase-dependent and -independent signaling pathways during myogenic differentiation.** *Mol Endocrinol* 1998, **12**(12):1870–1878.
51. Hinds TD Jr, Ramakrishnan S, Cash HA, Stechschulte LA, Heinrich G, Najjar SM, Sanchez ER: **Discovery of glucocorticoid receptor-beta in mice with a role in metabolism.** *Mol Endocrinol* 2010, **24**(9):1715–1727.

doi:10.1186/1471-2121-14-39

**Cite this article as:** Marino et al.: **Suppression of protein kinase C theta contributes to enhanced myogenesis *In vitro* via IRS1 and ERK1/2 phosphorylation.** *BMC Cell Biology* 2013 **14**:39.

**Submit your next manuscript to BioMed Central and take full advantage of:**

- **Convenient online submission**
- **Thorough peer review**
- **No space constraints or color figure charges**
- **Immediate publication on acceptance**
- **Inclusion in PubMed, CAS, Scopus and Google Scholar**
- **Research which is freely available for redistribution**

Submit your manuscript at  
www.biomedcentral.com/submit

