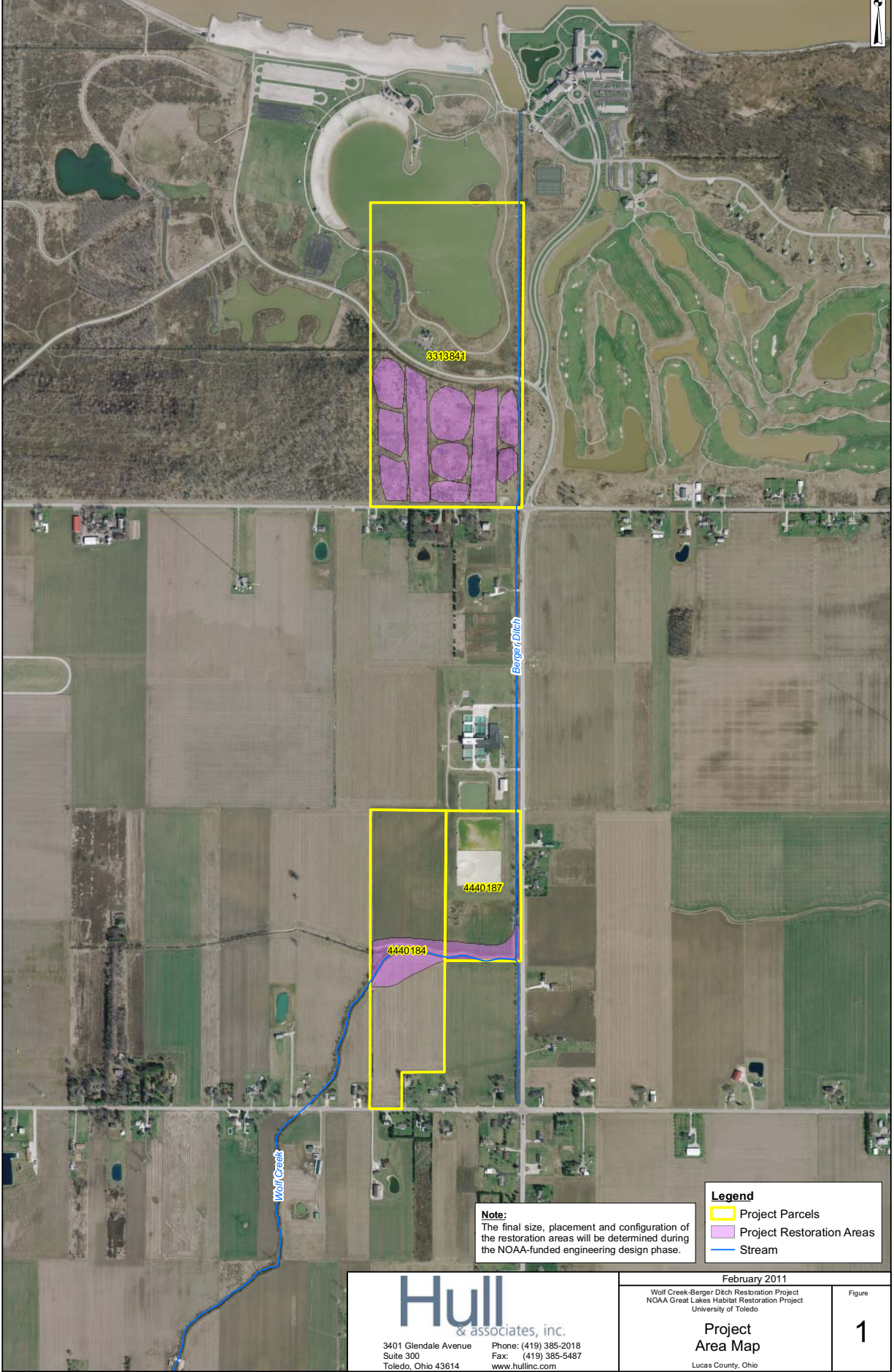


Lake Erie



3313841

4440187

4440184

**Legend**

- Project Parcels
- Project Restoration Areas
- Stream

**Note:**  
 The final size, placement and configuration of the restoration areas will be determined during the NOAA-funded engineering design phase.

<h1 style="margin: 0;">Hull</h1> <p style="margin: 0;">&amp; associates, inc.</p> <p style="margin: 0; font-size: small;">3401 Glendale Avenue Phone: (419) 385-2018          Suite 300 Fax: (419) 385-5487          Toledo, Ohio 43614 www.hullinc.com</p>	<p style="margin: 0; font-size: x-small;">February 2011</p> <p style="margin: 0; font-size: x-small;">Wolf Creek-Berger Ditch Restoration Project          NOAA Great Lakes Habitat Restoration Project          University of Toledo</p>	<p style="margin: 0; font-size: x-small;">Figure</p> <h1 style="margin: 0;">1</h1>
	<p style="margin: 0;"><b>Project Area Map</b></p> <p style="margin: 0; font-size: x-small;">Lucas County, Ohio</p>	