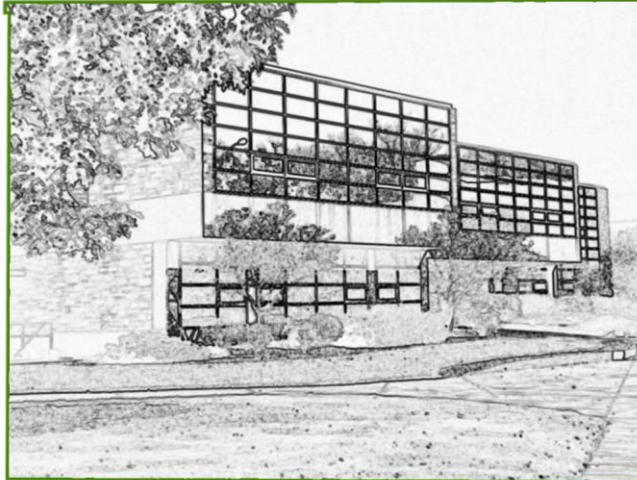


College of Health Science and Human Service 2009-2010 Directory



Health & Human
Services Building



Health Ed Building



Collier Building

Departments:

Counselor Education & School Psychology – HH

Criminal Justice – HH

Health Professions – HH

Health & Rehabilitative Services – HH/HE

Kinesiology – HH/HE

Military Science – HE

Occupational Therapy – CB

Physical Therapy – CB

Social Work – HH

Undergraduate Legal Specialties - HH

College of Health Science and Human Service

<i>Last Name</i>	<i>First Name</i>		<i>Contact Info</i>
ARMSTRONG	CHARLES	Ph.D.	<i>Mail Stop:</i> #119
PROFESSOR, CHAIRPERSON			<i>Office:</i> HH2503B
			<i>*Quick Dial:</i> 21-5369
KINESIOLOGY			<i>Phone:</i> 419-530-5369/2753/2741
			<i>Fax:</i> 419-530-2477
			<i>E-Mail:</i> charles.armstrong@utoledo.edu
ARNOS	PEGGY	Ph.D.	<i>Mail Stop:</i> #119
VISITING ASSISTANT PROFESSOR			<i>Office:</i> HH2505A
			<i>*Quick Dial:</i> 21-4351
KINESIOLOGY			<i>Phone:</i> 419-530-4351/2741
			<i>Fax:</i> 419-530-2477
			<i>E-Mail:</i> peggy.arnos@utoledo.edu
ATALAH	MARTY	M.B.A., Dept. of Army	<i>Mail Stop:</i> #217
YB2, HUMAN RESOURCES TECHNICIAN			<i>Office:</i> HE2060
			<i>*Quick Dial:</i> 21-2682
MILITARY SCIENCE			<i>Phone:</i> 419-530-2682/2681
			<i>Fax:</i> 419-530-4698
			<i>E-Mail:</i> martha.atalah@utoledo.edu
BANKS	DEBRA	B.B.A.	<i>Mail Stop:</i> #119
BUSINESS MANAGER			<i>Office:</i> HH3302B
			<i>*Quick Dial:</i> 21-5384
DEAN'S OFFICE			<i>Phone:</i> 419-530-5384
			<i>Fax:</i> 419-530-5540
			<i>E-Mail:</i> debra.banks@utoledo.edu
BAUMGARTNER	MAX	Ed.S., PT, OCS	<i>Mail Stop:</i> #1027
CLINICAL ASSISTANT PROFESSOR			<i>Office:</i> CB4204
			<i>*Quick Dial:</i> 68-4821
PHYSICAL THERAPY			<i>Phone:</i> 419-383-4821/3518
			<i>Fax:</i> 419-383-5880
			<i>E-Mail:</i> max.baumgartner@utoledo.edu
BEASLEY	JONATHAN	MAJ, M.A., B.S.	<i>Mail Stop:</i> #217
PROFESSOR & CHAIR			<i>Office:</i> HE2120A
			<i>*Quick Dial:</i> 21-4699
MILITARY SCIENCE			<i>Phone:</i> 419-530-4699/2681
			<i>Fax:</i> 419-530-4698
			<i>E-Mail:</i> jonathan.beasley@utoledo.edu
BENJAMIN	BARBARANNE	Ph.D.	<i>Mail Stop:</i> #119
PROFESSOR, ASSOCIATE DEAN FOR RESEARCH & GRADUATE EDUCATION			<i>Office:</i> HH2400H
			<i>*Quick Dial:</i> 21-2757
DEAN'S OFFICE			<i>Phone:</i> 419-530-2757/5307
			<i>Fax:</i> 419-530-5541
			<i>E-Mail:</i> barbaranne.benjamin@utoledo.edu

*NOTE: Quick Dial from Main to HSC, dial #68 then the extension; from HSC to Main, dial #21 then the extension.

<i>Last Name</i>	<i>First Name</i>		<i>Contact Info</i>
BIDDLESTONE	ANN	M.S.W.	<i>Mail Stop:</i> #119 <i>Office:</i> HH2626 <i>*Quick Dial:</i> 21-4664 <i>Phone:</i> 419-530-4664/4140 <i>Fax:</i> 419-530-4141 <i>E-Mail:</i> ann.biddlestone@utoledo.edu
ASSOCIATE LECTURER & BSW PROGRAM DIRECTOR			
SOCIAL WORK			
BLACK	CRAIG	Ph.D., RRT-NPS, FAARC	<i>Mail Stop:</i> #119 <i>Office:</i> HH2003A <i>*Quick Dial:</i> 21-4792 <i>Phone:</i> 419-530-4792 <i>Fax:</i> 419-530-4780 <i>E-Mail:</i> craig.black@utoledo.edu
ASSOCIATE PROFESSOR & DIRECTOR, RESPIRATORY CARE			
HEALTH PROFESSIONS			
BOTH	AMY	PT, M.H.S.	<i>Mail Stop:</i> #1027 <i>Office:</i> CB4209 <i>*Quick Dial:</i> 68-5098 <i>Phone:</i> 419-383-5098/3518 <i>Fax:</i> 419-383-5880 <i>E-Mail:</i> amy.both@utoledo.edu
ASSISTANT PROFESSOR			
PHYSICAL THERAPY			
BROWNING	DAVID	M.Ed.	<i>Mail Stop:</i> #119 <i>Office:</i> HH2612 <i>*Quick Dial:</i> 21-4207 <i>Phone:</i> 419-530-4207/4140 <i>Fax:</i> 419-530-4141 <i>E-Mail:</i> david.browning@utoledo.edu
ASSISTANT PROFESSOR			
SOCIAL WORK			
BROWNING	SANDRA	M.Ed.	<i>Mail Stop:</i> #119 <i>Office:</i> HH1100F <i>*Quick Dial:</i> 21-5305 <i>Phone:</i> 419-530-5305/5360 <i>Fax:</i> 419-530-5366 <i>E-Mail:</i> sandra.browning@utoledo.edu
ADVISER - KINESIOLOGY			
STUDENT SERVICES			
BUCKLEY	HEATH	CPT, M.A., B.A.	<i>Mail Stop:</i> #217 <i>Office:</i> HE2030 <i>*Quick Dial:</i> 21-4692 <i>Phone:</i> 419-530-4692/2681 <i>Fax:</i> 419-530-4698 <i>E-Mail:</i> heath.buckley@utoledo.edu
ASSISTANT PROFESSOR			
MILITARY SCIENCE			
CHAPMAN	LYNNE	M.S., OTR/L, LICDC	<i>Mail Stop:</i> #1027 <i>Office:</i> CB4203 <i>*Quick Dial:</i> 68-4201 <i>Phone:</i> 419-383-4201/3519 <i>Fax:</i> 419-383-5880 <i>E-Mail:</i> lynne.chapman@utoledo.edu
CLINICAL ASSISTANT PROFESSOR			
OCCUPATIONAL THERAPY			
CLUSE-TOLAR	TERRY	Ph.D., M.S.W.	<i>Mail Stop:</i> #119 <i>Office:</i> HH2630 <i>*Quick Dial:</i> 21-4397 <i>Phone:</i> 419-530-4397/4140 <i>Fax:</i> 419-530-4141 <i>E-Mail:</i> theresa.cluse-tolar@utoledo.edu
ASSOCIATE PROFESSOR, CHAIRPERSON			
SOCIAL WORK			

*NOTE: Quick Dial from Main to HSC, dial #68 then the extension; from HSC to Main, dial #21 then the extension.

<i>Last Name</i>	<i>First Name</i>		<i>Contact Info</i>
COCHRANE	WENDY	Ph.D.	<i>Mail Stop:</i> #119 <i>Office:</i> HH3100G <i>*Quick Dial:</i> 21-2013 <i>Phone:</i> 419-530-2013/2718 <i>Fax:</i> 419-530-7879 <i>E-Mail:</i> wendy.cochrane@utoledo.edu
ASSOCIATE PROFESSOR, School Psychology			
COUNSELOR EDUCATION AND SCHOOL PSYCHOLOGY			
COLEMAN	BETTY	M.A.	<i>Mail Stop:</i> #119 <i>Office:</i> HH1240D <i>*Quick Dial:</i> 21-2192 <i>Phone:</i> 419-530-2192/4339 <i>Fax:</i> 419-530-4346 <i>E-Mail:</i> betty.coleman@utoledo.edu
LECTURER, Speech-Language Pathology			
HEALTH AND REHABILITATIVE SERVICES			
COYLE	JULIE	M.Ed., LSW	<i>Mail Stop:</i> #119 <i>Office:</i> HH1003H <i>*Quick Dial:</i> 21-2624 <i>Phone:</i> 419-530-2624/2743 <i>Fax:</i> 419-530-4759 <i>E-Mail:</i> julie.coyle@utoledo.edu
VISITING ASSISTANT PROFESSOR, Health Education			
HEALTH AND REHABILITATIVE SERVICES			
CRISS	MELANIE	MOT, OTR/L	<i>Mail Stop:</i> #1027 <i>Office:</i> CB4218 <i>*Quick Dial:</i> 68-5498 <i>Phone:</i> 419-383-5498/3519 <i>Fax:</i> 419-383-5880 <i>E-Mail:</i> melanie.criss@utoledo.edu
INSTRUCTOR & COORDINATOR OF FIELDWORK EDUCATION & PROFESSIONAL DEVELOPMENT			
OCCUPATIONAL THERAPY			
DAKE	JOSEPH	Ph.D., MPH	<i>Mail Stop:</i> #119 <i>Office:</i> HH1004 <i>*Quick Dial:</i> 21-2767 <i>Phone:</i> 419-530-2767/2743 <i>Fax:</i> 419-530-4759 <i>E-Mail:</i> joseph.dake@utoledo.edu
ASSOC. PROFESSOR & COORD., HEALTH PROGRAMS, Health Education			
HEALTH AND REHABILITATIVE SERVICES			
DANFORTH	WADE	CPT, M.B.A., B.S.	<i>Mail Stop:</i> #217 <i>Office:</i> HE2030 <i>*Quick Dial:</i> 21-4692 <i>Phone:</i> 419-530-4692/2681 <i>Fax:</i> 419-530-4698 <i>E-Mail:</i> wade.danforth@utoledo.edu
SENIOR MILITARY SCIENCE INSTRUCTOR			
MILITARY SCIENCE			
DAVIS	THOMAS	B.S.	<i>Mail Stop:</i> #119 <i>Office:</i> HH3026 <i>*Quick Dial:</i> 21-7228 <i>Phone:</i> 419-530-7228/7239 <i>Fax:</i> 419-530-7240 <i>E-Mail:</i> tom.davis@utoledo.edu
CONSULTANT			
TECH PREP			
DeANGELO	ANGELA	M.Ed.	<i>Mail Stop:</i> #119 <i>Office:</i> HH1100K <i>*Quick Dial:</i> 21-4624 <i>Phone:</i> 419-530-4624/5360 <i>Fax:</i> 419-530-5366 <i>E-Mail:</i> angela.deangelo@utoledo.edu
ADVISER - HIM, DISTANCE eLEARNING AND TRANSFER			
STUDENT SERVICES			

*NOTE: Quick Dial from Main to HSC, dial #68 then the extension; from HSC to Main, dial #21 then the extension.

<i>Last Name</i>	<i>First Name</i>	<i>Contact Info</i>
DELGADO FIELD DIRECTOR SOCIAL WORK	MARTHA M.S.W.	<i>Mail Stop:</i> #119 <i>Office:</i> HH2628 <i>*Quick Dial:</i> 21-4663 <i>Phone:</i> 419-530-4663/4140 <i>Fax:</i> 419-530-4141 <i>E-Mail:</i> martha.delgado@utoledo.edu
DEWEY CONSULTANT TECH PREP/HSTW	PAULETTE	<i>Mail Stop:</i> #119 <i>Office:</i> HH2032 <i>*Quick Dial:</i> 21-7226 <i>Phone:</i> 419-530-7226/7239 <i>Fax:</i> 419-530-7240 <i>E-Mail:</i> paulette.dewey@utoledo.edu
DING ASSISTANT PROFESSOR, School Psychology COUNSELOR EDUCATION AND SCHOOL PSYCHOLOGY	YI Ph.D., Ed.S.	<i>Mail Stop:</i> #119 <i>Office:</i> HH3100F <i>*Quick Dial:</i> 21-4301 <i>Phone:</i> 419-530-4301/2718 <i>Fax:</i> 419-530-7879 <i>E-Mail:</i> yi.ding@utoledo.edu
DUPUY PROFESSOR, Counselor Education COUNSELOR EDUCATION AND SCHOOL PSYCHOLOGY	PAULA Ed.D., PCC	<i>Mail Stop:</i> #119 <i>Office:</i> HH3100A <i>*Quick Dial:</i> 21-4064 <i>Phone:</i> 419-530-4064/2718 <i>Fax:</i> 419-530-7879 <i>E-Mail:</i> paula.dupuy@utoledo.edu
DZIUBEK ASSISTANT PROFESSOR MILITARY SCIENCE	CHRISTOPHER MAJ, M.A., B.A.	<i>Mail Stop:</i> #217 <i>Office:</i> HE2000 <i>*Quick Dial:</i> 21-2018 <i>Phone:</i> 419-530-2018/2681 <i>Fax:</i> 419-530-4698 <i>E-Mail:</i> christopher.dziubek@utoledo.edu
ELLIS PROFESSOR, Speech-Language Pathology HEALTH AND REHABILITATIVE SERVICES	LEE Ph.D.	<i>Mail Stop:</i> #119 <i>Office:</i> HH1030 <i>*Quick Dial:</i> 21-4065 <i>Phone:</i> 419-530-4065/2743 <i>Fax:</i> 419-530-4759 <i>E-Mail:</i> lee.ellis@utoledo.edu
ENCK CONSULTANT TECH PREP	SUSAN	<i>Mail Stop:</i> #119 <i>Office:</i> HH3026 <i>*Quick Dial:</i> 21-7228 <i>Phone:</i> 419-530-7228/7239 <i>Fax:</i> 419-530-7240 <i>E-Mail:</i> susan.enck@utoledo.edu
ERVIN ASSOCIATE LECTURER, Anatomy & Physiology KINESIOLOGY	ELYCE M.S.	<i>Mail Stop:</i> #119 <i>Office:</i> HH2505L <i>*Quick Dial:</i> 21-2457 <i>Phone:</i> 419-530-2457/2741 <i>Fax:</i> 419-530-2477 <i>E-Mail:</i> elyce.ervin@utoledo.edu

*NOTE: Quick Dial from Main to HSC, dial #68 then the extension; from HSC to Main, dial #21 then the extension.

<i>Last Name</i>	<i>First Name</i>		<i>Contact Info</i>
FORQUER	DIANE	A.A.B.	<i>Mail Stop:</i> #1027 <i>Office:</i> CB4402 <i>*Quick Dial:</i> 68-3519 <i>Phone:</i> 419-383-3519 <i>Fax:</i> 419-383-5880 <i>E-Mail:</i> diane.forquer@utoledo.edu
ADMINISTRATIVE SECRETARY II			
OCCUPATIONAL THERAPY			
GLASCO	MAGGIE	A.S.	<i>Mail Stop:</i> #217 <i>Office:</i> HE2160 <i>*Quick Dial:</i> 21-2681 <i>Phone:</i> 419-530-2681 <i>Fax:</i> 419-530-4698 <i>E-Mail:</i> mglasco@utnet.utoledo.edu
SECRETARY I			
MILITARY SCIENCE			
GLASSMAN	TAVIS	Ph.D., MPH, CHES	<i>Mail Stop:</i> #119 <i>Office:</i> HH1006 <i>*Quick Dial:</i> 21-2770 <i>Phone:</i> 419-530-2770/2743 <i>Fax:</i> 419-530-4759 <i>E-Mail:</i> tavis.glassman@utoledo.edu
ASSISTANT PROFESSOR, Health Education			
HEALTH AND REHABILITATIVE SERVICES			
GOSSERT	DEB		<i>Mail Stop:</i> #119 <i>Office:</i> HH2630 <i>*Quick Dial:</i> 21-4140 <i>Phone:</i> 419-530-4140 <i>Fax:</i> 419-530-4141 <i>E-Mail:</i> deb.gossert@utoledo.edu
SECRETARY I			
SOCIAL WORK			
GRETHER	SALLY		<i>Mail Stop:</i> #119 <i>Office:</i> HH1240 <i>*Quick Dial:</i> 21-4339 <i>Phone:</i> 419-530-4339 <i>Fax:</i> 419-530-4346 <i>E-Mail:</i> sally.grether@utoledo.edu
SECRETARY I/SPEECH CLINIC			
HEALTH AND REHABILITATIVE SERVICES			
GRIBBLE	PHILLIP	Ph.D.	<i>Mail Stop:</i> #119 <i>Office:</i> HH2505H <i>*Quick Dial:</i> 21-2691 <i>Phone:</i> 419-530-2691/2741 <i>Fax:</i> 419-530-2477 <i>E-Mail:</i> phillip.gribble@utoledo.edu
ASSOCIATE PROFESSOR, Athletic Training			
KINESIOLOGY			
GROVES	BRUCE	Ph.D.	<i>Mail Stop:</i> #119 <i>Office:</i> HH1018 <i>*Quick Dial:</i> 21-4353 <i>Phone:</i> 419-530-4353/2743 <i>Fax:</i> 419-530-4759 <i>E-Mail:</i> bruce.groves@utoledo.edu
ASSOCIATE PROFESSOR, Recreation & Leisure Studies			
HEALTH AND REHABILITATIVE SERVICES			
GWOZDZ	BECKY		<i>Mail Stop:</i> #1027 <i>Office:</i> CB4416 <i>*Quick Dial:</i> 21-3518 <i>Phone:</i> 419-383-3518 <i>Fax:</i> 419-383-5880 <i>E-Mail:</i> becky.gwozdz@utoledo.edu
ADMINISTRATIVE ASSISTANT II			
PHYSICAL THERAPY			

*NOTE: Quick Dial from Main to HSC, dial #68 then the extension; from HSC to Main, dial #21 then the extension.

<i>Last Name</i>	<i>First Name</i>		<i>Contact Info</i>
HARPER	HOLLY	Ph.D., PC, NCC	<i>Mail Stop:</i> #119 <i>Office:</i> HH3100K <i>*Quick Dial:</i> 21-4311 <i>Phone:</i> 419-530-4311/2718 <i>Fax:</i> 419-530-7879 <i>E-Mail:</i> holly.harper@utoledo.edu
ASSISTANT PROFESSOR, Counselor Education			
COUNSELOR EDUCATION AND SCHOOL PSYCHOLOGY			
HATKEVICH	BETH ANN	Ph.D, OTR/L	<i>Mail Stop:</i> #1027 <i>Office:</i> CB4222 <i>*Quick Dial:</i> 68-5848 <i>Phone:</i> 419-383-5848/3519 <i>Fax:</i> 419-383-5880 <i>E-Mail:</i> bethann.hatkevich@utoledo.edu
CLINICAL ASSOCIATE PROFESSOR, DIRECTOR OF CLINICAL & EDUCATIONAL PROGRAMMING			
OCCUPATIONAL THERAPY			
HICKAM	BRIAN	M.L.I.S.	<i>Mail Stop:</i> #509 <i>Office:</i> CL1024 <i>*Quick Dial:</i> 21-4493 <i>Phone:</i> 419-530-4493 <i>Fax:</i> 419-530-2542 <i>E-Mail:</i> brian.hickam@utoledo.edu
ASSISTANT PROFESSOR, LIBRARIAN - HUMAN SERVICE PROGRAMS			
GENERAL LIBRARIES			
HOCHBERG	SUE ANN	J.D., B.S.N., R.N.	<i>Mail Stop:</i> #119 <i>Office:</i> HH2400J <i>*Quick Dial:</i> 21-4051 <i>Phone:</i> 419-530-4051 <i>Fax:</i> 419-530-5541 <i>E-Mail:</i> sue.hochberg@utoledo.edu
EXEC. DIR. & RESEARCH COORD., NAT'L. CENTER FOR PARENTS			
DEAN'S OFFICE			
HORNBECK	CATHERINE	PT, Ph.D.	<i>Mail Stop:</i> #1027 <i>Office:</i> CB4205 <i>*Quick Dial:</i> 68-4818 <i>Phone:</i> 419-383-4818/3518 <i>Fax:</i> 419-383-5880 <i>E-Mail:</i> catherine.hornbeck@utoledo.edu
ASSISTANT PROFESSOR			
PHYSICAL THERAPY			
HOY	JANET	Ph.D., MSW	<i>Mail Stop:</i> #119 <i>Office:</i> HH2610 <i>*Quick Dial:</i> 21-4208 <i>Phone:</i> 419-530-4208/4140 <i>Fax:</i> 419-530-4141 <i>E-Mail:</i> janet.hoy@utoledo.edu
ASSISTANT PROFESSOR			
SOCIAL WORK			
HUG	HEATHER	M.S.	<i>Mail Stop:</i> #119 <i>Office:</i> HH2505G <i>*Quick Dial:</i> 21-2773 <i>Phone:</i> 419-530-2773/2741 <i>Fax:</i> 419-530-2477 <i>E-Mail:</i> heather.hug@utoledo.edu
LECTURER, Anatomy & Physiology			
KINESIOLOGY			
HUTTON	JOHNNY		<i>Mail Stop:</i> #119 <i>Office:</i> HH2032 <i>*Quick Dial:</i> 21-7226 <i>Phone:</i> 419-530-7226/7239 <i>Fax:</i> 419-530-7240 <i>E-Mail:</i> johnny.hutton@utoledo.edu
CONSULTANT			
TECH PREP/HSTW			

*NOTE: Quick Dial from Main to HSC, dial #68 then the extension; from HSC to Main, dial #21 then the extension.

<i>Last Name</i>	<i>First Name</i>		<i>Contact Info</i>
JACKSON	KATE	Ph.D.	<i>Mail Stop:</i> #119 <i>Office:</i> HH2505K <i>*Quick Dial:</i> 21-4473 <i>Phone:</i> 419-530-4473/2741 <i>Fax:</i> 419-530-2477 <i>E-Mail:</i> kate.jackson@utoledo.edu
LECTURER & CLINICAL COORDINATOR, Athletic Training			
KINESIOLOGY			
JACKSON	KATHLYNN		<i>Mail Stop:</i> #119 <i>Office:</i> HH2200D <i>*Quick Dial:</i> 21-8540 <i>Phone:</i> 419-530-8540 <i>Fax:</i> 419-530-5541 <i>E-Mail:</i> kathlynn.jackso@utoledo.edu
COLLEGE IT DIRECTOR, CHSHS			
EDUCATION AND INFORMATIONAL TECHNOLOGY			
JANES	MARIE	M.Ed., RHIA	<i>Mail Stop:</i> #119 <i>Office:</i> HH2022 <i>*Quick Dial:</i> 21-4523 <i>Phone:</i> 419-530-4523 <i>Fax:</i> 419-530-4780 <i>E-Mail:</i> marie.janes@utoledo.edu
LECTURER & DIRECTOR, HEALTH INFORMATION MANAGEMENT			
HEALTH PROFESSIONS			
JENKINS	MORRIS	Ph.D., J.D.	<i>Mail Stop:</i> #119 <i>Office:</i> HH3002 <i>*Quick Dial:</i> 21-2313 <i>Phone:</i> 419-530-2313/2142 <i>Fax:</i> 419-530-2153 <i>E-Mail:</i> morris.jenkins@utoledo.edu
ASSOCIATE PROFESSOR			
CRIMINAL JUSTICE			
JENNINGS	JAMES		<i>Mail Stop:</i> #119 <i>Office:</i> HH3022 <i>*Quick Dial:</i> 21-7227 <i>Phone:</i> 419-530-7227/7239 <i>Fax:</i> 419-530-7240 <i>E-Mail:</i> james.jennings@utoledo.edu
CONSULTANT			
TECH PREP			
JENNINGS	MYLO	Ph.D.	<i>Mail Stop:</i> #119 <i>Office:</i> HH2624 <i>*Quick Dial:</i> 21-4122 <i>Phone:</i> 419-530-4122/4140 <i>Fax:</i> 419-530-4141 <i>E-Mail:</i> mylo.jennings@utoledo.edu
ASSOCIATE PROFESSOR			
SOCIAL WORK			
JIANG	SHANHE	Ph.D.	<i>Mail Stop:</i> #119 <i>Office:</i> HH3016 <i>*Quick Dial:</i> 21-4329 <i>Phone:</i> 419-530-4329/2142 <i>Fax:</i> 419-530-2153 <i>E-Mail:</i> shanhe.jiang@utoledo.edu
PROFESSOR			
CRIMINAL JUSTICE			
JOHNSON	RICHARD	Ph.D.	<i>Mail Stop:</i> #119 <i>Office:</i> HH3006 <i>*Quick Dial:</i> 21-4639 <i>Phone:</i> 419-530-4639/2142 <i>Fax:</i> 419-530-2153 <i>E-Mail:</i> richard.johnson4@utoledo.edu
ASSISTANT PROFESSOR			
CRIMINAL JUSTICE			

*NOTE: Quick Dial from Main to HSC, dial #68 then the extension; from HSC to Main, dial #21 then the extension.

<i>Last Name</i>	<i>First Name</i>		<i>Contact Info</i>
JORDAN	TIMOTHY	Ph.D.	<i>Mail Stop:</i> #119
ASSOCIATE PROFESSOR, Health Education			<i>Office:</i> HH1008
			<i>*Quick Dial:</i> 21-4725
<i>HEALTH AND REHABILITATIVE SERVICES</i>			<i>Phone:</i> 419-530-4725/2743
			<i>Fax:</i> 419-530-4759
			<i>E-Mail:</i> timothy.jordan2@utoledo.edu
KNISLEY	PATRICIA M.	M.S., R.D., L.D.	<i>Mail Stop:</i> #119
LECTURER, Health Education			<i>Office:</i> HH1003J
			<i>*Quick Dial:</i> 21-2110
<i>HEALTH AND REHABILITATIVE SERVICES</i>			<i>Phone:</i> 419-530-2110/2743
			<i>Fax:</i> 419-530-4759
			<i>E-Mail:</i> patricia.knisley@utoledo.edu
KOMIVES	PATTI		<i>Mail Stop:</i> #119
SECRETARY I			<i>Office:</i> HH3000
			<i>*Quick Dial:</i> 21-2142
<i>CRIMINAL JUSTICE</i>			<i>Phone:</i> 419-530-2142
			<i>Fax:</i> 419-530-2153
			<i>E-Mail:</i> patricia.komives@utoledo.edu
KOPP MILLER	BARBARA	Ph.D.	<i>Mail Stop:</i> #1027
ASSOCIATE PROFESSOR			<i>Office:</i> CB4224
			<i>*Quick Dial:</i> 68-4289
<i>OCCUPATIONAL THERAPY</i>			<i>Phone:</i> 419-383-4289/3519
			<i>Fax:</i> 419-383-5880
			<i>E-Mail:</i> barbara.koppmiller@utoledo.edu
KUCHAREWSKI	RUTHIE	Ph.D., CTRS	<i>Mail Stop:</i> #119
PROFESSOR, CHAIRPERSON & DIRECTOR, RECREATION THERAPY PROGRAM			<i>Office:</i> HH1000C
			<i>*Quick Dial:</i> 21-2762
<i>HEALTH AND REHABILITATIVE SERVICES</i>			<i>Phone:</i> 419-530-2762/2743
			<i>Fax:</i> 419-530-4759
			<i>E-Mail:</i> r.kucharewski@utoledo.edu
KUJAWA	DAVID	PT, MBA, OCS	<i>Mail Stop:</i> #1027
CLINICAL ASSISTANT PROFESSOR			<i>Office:</i> CB4212
			<i>*Quick Dial:</i> 68-4732
<i>PHYSICAL THERAPY</i>			<i>Phone:</i> 419-383-4732/5040/3518
			<i>Fax:</i> 419-383-5880/318
			<i>E-Mail:</i> david.kujawa@utoledo.edu
KWIATKOWSKI	BRUCE	Ph.D.	<i>Mail Stop:</i> #119
ELECTRONIC TECHNOLOGIST I			<i>Office:</i> HH2504A
			<i>*Quick Dial:</i> 21-4358
<i>KINESIOLOGY</i>			<i>Phone:</i> 419-530-4358/2741
			<i>Fax:</i> 419-530-2477
			<i>E-Mail:</i> bruce.kwiatkowski@utoledo.edu
LAUX	JOHN	Ph.D., PCC	<i>Mail Stop:</i> #119
ASSOCIATE PROFESSOR, Counselor Education			<i>Office:</i> HH3100E
			<i>*Quick Dial:</i> 21-4705
<i>COUNSELOR EDUCATION AND SCHOOL PSYCHOLOGY</i>			<i>Phone:</i> 419-530-4705/2718
			<i>Fax:</i> 419-530-7879
			<i>E-Mail:</i> john.laux@utoledo.edu

*NOTE: Quick Dial from Main to HSC, dial #68 then the extension; from HSC to Main, dial #21 then the extension.

<i>Last Name</i>	<i>First Name</i>		<i>Contact Info</i>
LEE	ABRAHAM	PT, Ph.D.	<i>Mail Stop:</i> #1027 <i>Office:</i> CB4206 <i>*Quick Dial:</i> 68-3437 <i>Phone:</i> 419-383-3437/3518 <i>Fax:</i> 419-383-5880 <i>E-Mail:</i> abraham.lee2@utoledo.edu
ASSOCIATE PROFESSOR			
PHYSICAL THERAPY			
LEE	YONGHO	Ph.D., CTRS	<i>Mail Stop:</i> #119 <i>Office:</i> HH1016 <i>*Quick Dial:</i> 21-2751 <i>Phone:</i> 419-530-2751/2743 <i>Fax:</i> 419-530-4759 <i>E-Mail:</i> yongho.lee@utoledo.edu
ASSISTANT PROFESSOR, Recreation & Leisure Studies			
HEALTH AND REHABILITATIVE SERVICES			
LENGFELDER	JULIE	Ph.D.	<i>Mail Stop:</i> #119 <i>Office:</i> HH1028 <i>*Quick Dial:</i> 21-2173 <i>Phone:</i> 419-530-2173/2743 <i>Fax:</i> 419-530-4759 <i>E-Mail:</i> julie.lengfelder@utoledo.edu
LECTURER, Recreation & Leisure Studies			
HEALTH AND REHABILITATIVE SERVICES			
LENKEY	LAURA	Ph.D.	<i>Mail Stop:</i> #119 <i>Office:</i> HH1024 <i>*Quick Dial:</i> 21-8590 <i>Phone:</i> 419-530-8590/2743 <i>Fax:</i> 419-530-4759 <i>E-Mail:</i> laura.lenkey@utoledo.edu
ASSISTANT PROFESSOR, Speech-Language Pathology			
HEALTH AND REHABILITATIVE SERVICES			
LINKER	CAROL	J.D.	<i>Mail Stop:</i> #119 <i>Office:</i> HH1300J <i>*Quick Dial:</i> 21-7743 <i>Phone:</i> 419-530-7743 <i>Fax:</i> 419-530-7752 <i>E-Mail:</i> carol.linker@utoledo.edu
ASSOCIATE PROFESSOR			
UNDERGRADUATE LEGAL SPECIALTIES			
LIPPMAN	DARRYL	M.H.A.	<i>Mail Stop:</i> #119 <i>Office:</i> HH1022 <i>*Quick Dial:</i> 21-5372 <i>Phone:</i> 419-530-5372/2743 <i>Fax:</i> 419-530-4759 <i>E-Mail:</i> darryl.lippman@utoledo.edu
ASSOCIATE LECTURER, Health Care Administration			
HEALTH AND REHABILITATIVE SERVICES			
LONGSDORF	ERIC	Ph.D.	<i>Mail Stop:</i> #119 <i>Office:</i> HH1020 <i>*Quick Dial:</i> 21-2742 <i>Phone:</i> 419-530-2742/2743 <i>Fax:</i> 419-532-4759 <i>E-Mail:</i> eric.longsdorf@utoledo.edu
ASSOCIATE PROFESSOR & COORDINATOR, RECREATION AND LEISURE STUDIES			
HEALTH AND REHABILITATIVE SERVICES			
MARAN	WENDY	MA, CTRS	<i>Mail Stop:</i> #119 <i>Office:</i> HH1011 <i>*Quick Dial:</i> 21-4955 <i>Phone:</i> 419-530-4955/2743 <i>Fax:</i> 419-530-4759 <i>E-Mail:</i> wendy.maran@utoledo.edu
VISITING ASSISTANT PROFESSOR, Recreation & Leisure Studies			
HEALTH AND REHABILITATIVE SERVICES			

*NOTE: Quick Dial from Main to HSC, dial #68 then the extension; from HSC to Main, dial #21 then the extension.

<i>Last Name</i>	<i>First Name</i>	<i>Contact Info</i>
MARTIN SECRETARY I COUNSELOR EDUCATION AND SCHOOL PSYCHOLOGY	SUZANNE	<i>Mail Stop:</i> #119 <i>Office:</i> HH3100 <i>*Quick Dial:</i> 21-2718 <i>Phone:</i> 419-530-2718 <i>Fax:</i> 419-530-7879 <i>E-Mail:</i> suzanne.martin@utoledo.edu
MASTERSON ASSOCIATE PROFESSOR, INTERIM CHAIRPERSON PHYSICAL THERAPY	MICHELLE PT, Ph.D.	<i>Mail Stop:</i> #1027 <i>Office:</i> CB4418 <i>*Quick Dial:</i> 68-5316 <i>Phone:</i> 419-383-5316/3518 <i>Fax:</i> 419-383-5880 <i>E-Mail:</i> michelle.masteron@utoledo.edu
MCAFEE ASSOCIATE PROFESSOR, Anatomy & Physiology KINESIOLOGY	ALICE Ph.D.	<i>Mail Stop:</i> #119 <i>Office:</i> HH2516 <i>*Quick Dial:</i> 21-4241 <i>Phone:</i> 419-530-4241/2741 <i>Fax:</i> 419-530-2477 <i>E-Mail:</i> alice.mcafee@utoledo.edu
McILWAIN VISITING ASSISTANT PROFESSOR, Health Information Mgt. HEALTH PROFESSIONS	CATHERINE M.Ed, M.S., RHIA	<i>Mail Stop:</i> #119 <i>Office:</i> HH2026 <i>*Quick Dial:</i> 21-4500 <i>Phone:</i> 419-530-4500 <i>Fax:</i> 419-530-4780 <i>E-Mail:</i> catherine.mcilwain@utoledo.edu
MCCLOUGHLIN ASSISTANT PROFESSOR, Exercise Physiology KINESIOLOGY	THOMAS Ph.D.	<i>Mail Stop:</i> #119 <i>Office:</i> HH2505F <i>*Quick Dial:</i> 21-5982 <i>Phone:</i> 419-530-5982/2741 <i>Fax:</i> 419-530-2477 <i>E-Mail:</i> thomas.mcloughlin@utoledo.edu
MENEZES ASSISTANT PROFESSOR, Speech-Language Pathology HEALTH AND REHABILITATIVE SERVICES	CAROLINE Ph.D.	<i>Mail Stop:</i> #119 <i>Office:</i> HH1026 <i>*Quick Dial:</i> 21-4443 <i>Phone:</i> 419-530-4443/2743 <i>Fax:</i> 419-530-4759 <i>E-Mail:</i> caroline.menezes@utoledo.edu
METZ ASSISTANT PROFESSOR OCCUPATIONAL THERAPY	ALEXIA Ph.D., OTR/L	<i>Mail Stop:</i> #1027 <i>Office:</i> CB4216 <i>*Quick Dial:</i> 68-4712 <i>Phone:</i> 419-383-4712/3519 <i>Fax:</i> 419-383-5880 <i>E-Mail:</i> alexia.metz@utoledo.edu
MILITZER SECRETARY I TECH PREP	PAT	<i>Mail Stop:</i> #119 <i>Office:</i> HH3017 <i>*Quick Dial:</i> 21-7239 <i>Phone:</i> 419-530-7239/7229 <i>Fax:</i> 419-530-7240 <i>E-Mail:</i> pat.militzer@utoledo.edu

*NOTE: Quick Dial from Main to HSC, dial #68 then the extension; from HSC to Main, dial #21 then the extension.

<i>Last Name</i>	<i>First Name</i>		<i>Contact Info</i>
MOORE	BRADENE	J.D.	<i>Mail Stop:</i> #119 <i>Office:</i> HH1300M <i>*Quick Dial:</i> 21-7745 <i>Phone:</i> 419-530-7745 <i>Fax:</i> 419-530-7752 <i>E-Mail:</i> bradene.moore2@utoledo.edu
ASSOCIATE PROFESSOR			
UNDERGRADUATE LEGAL SPECIALTIES			
MURRAY	BRIAN	CPT, B.A.	<i>Mail Stop:</i> #217 <i>Office:</i> HE2080 <i>*Quick Dial:</i> 21-4693 <i>Phone:</i> 419-530-4693/2681 <i>Fax:</i> 419-530-4698 <i>E-Mail:</i> brian.murray2@utoledo.edu
ASSISTANT PROFESSOR			
MILITARY SCIENCE			
NAGLE	ROBERT	B.A., J.D.	<i>Mail Stop:</i> #217 <i>Office:</i> HE1520A <i>*Quick Dial:</i> 21-4995 <i>Phone:</i> 419-530-4995/4691 <i>Fax:</i> 419-530-4698 <i>E-Mail:</i> robert.nagle@utoledo.edu
YB2, LOGISTICS TECHNICIAN			
MILITARY SCIENCE			
NATAL	JERRY	M.L.I.S.	<i>Mail Stop:</i> #1061 <i>Office:</i> ML 411 <i>*Quick Dial:</i> 21-4227 <i>Phone:</i> 419-383-4227 <i>Fax:</i> 419-383-6146 <i>E-Mail:</i> gerald.natal@utoledo.edu
INSTRUCTOR, LIBRARIAN - HEALTH SCIENCE PROGRAMS			
MULFORD LIBRARY			
NATHAN	VINCENT M.	L.L.D.	<i>Mail Stop:</i> #119 <i>Office:</i> HH3020 <i>*Quick Dial:</i> 21-4676 <i>Phone:</i> 419-530-4676/2142 <i>Fax:</i> 419-530-2153 <i>E-Mail:</i> vincent.nathan@utoledo.edu
LECTURER			
CRIMINAL JUSTICE			
NELSON	DAVID L.	Ph.D., OTR/L, FAOTA	<i>Mail Stop:</i> #450 <i>Office:</i> 2170 Scott Park Student Ctr <i>*Quick Dial:</i> <i>Phone:</i> 419-383-3467/3519 <i>Fax:</i> 419-383-5880 <i>E-Mail:</i> david.nelson3@utoledo.edu
PROFESSOR			
OCCUPATIONAL THERAPY			
OVALL	JENNIFER	M.S.	<i>Mail Stop:</i> #119 <i>Office:</i> HH1002 <i>*Quick Dial:</i> 21-2582 <i>Phone:</i> 419-530-2582/4339 <i>Fax:</i> 419-530-4346 <i>E-Mail:</i> jennifer.ovall@utoledo.edu
VISITING ASSISTANT PROFESSOR & SPEECH CLINIC COORDINATOR			
HEALTH AND REHABILITATIVE SERVICES			
OVENDEN	GEOFFREY	LTC (Ret), M.S.Ed., B.S.	<i>Mail Stop:</i> #217 <i>Office:</i> HE2100 <i>*Quick Dial:</i> 21-4696 <i>Phone:</i> 419-530-4696/2681 <i>Fax:</i> 419-530-4698 <i>E-Mail:</i> geoffrey.ovenden@utoledo.edu
ASSISTANT PROFESSOR			
MILITARY SCIENCE			

*NOTE: Quick Dial from Main to HSC, dial #68 then the extension; from HSC to Main, dial #21 then the extension.

<i>Last Name</i>	<i>First Name</i>		<i>Contact Info</i>
PAKULSKI	LORI	Ph.D.	<i>Mail Stop:</i> #119 <i>Office:</i> HH1240C <i>*Quick Dial:</i> 21-2573 <i>Phone:</i> 419-530-2573/2743 <i>Fax:</i> 419-530-4759 <i>E-Mail:</i> lori.pakulski@utoledo.edu
ASSOCIATE PROFESSOR, Speech-Language Pathology			
HEALTH AND REHABILITATIVE SERVICES			
PALAZZOLO	MARILYN	A.T.S.	<i>Mail Stop:</i> #119 <i>Office:</i> HH2400 <i>*Quick Dial:</i> 21-5304 <i>Phone:</i> 419-530-5304 <i>Fax:</i> 419-530-5541 <i>E-Mail:</i> marilyn.palazzolo@utoledo.edu
SECRETARY I			
DEAN'S OFFICE			
PALKA	CAROL	A.S.C.	<i>Mail Stop:</i> #119 <i>Office:</i> HH1100 <i>*Quick Dial:</i> 21-5364 <i>Phone:</i> 419-530-5364/5360 <i>Fax:</i> 419-530-5366 <i>E-Mail:</i> carol.palka@utoledo.edu
STUDENT SERVICES COUNSELOR			
STUDENT SERVICES			
PARDEE	MIRELLA	M.S.N., R.N.	<i>Mail Stop:</i> #119 <i>Office:</i> HH1003E <i>*Quick Dial:</i> 21-4575 <i>Phone:</i> 419-530-4575/2743 <i>Fax:</i> 419-530-4759 <i>E-Mail:</i> mirella.pardee@utoledo.edu
ASSOCIATE PROFESSOR, Health Education			
HEALTH AND REHABILITATIVE SERVICES			
PARSONS	KYLE	B.S.	<i>Mail Stop:</i> #119 <i>Office:</i> HH2100 <i>*Quick Dial:</i> 21-4750 <i>Phone:</i> 419-530-4750/5313 <i>Fax:</i> 419-530-5541 <i>E-Mail:</i> kyle.parsons@utoledo.edu
TECHNOLOGY SUPPORT SPECIALIST			
EDUCATION AND INFORMATIONAL TECHNOLOGY			
PASQUINELLI	TERRI	A.B.A.	<i>Mail Stop:</i> #119 <i>Office:</i> HH1000 <i>*Quick Dial:</i> 21-2743 <i>Phone:</i> 419-530-2743 <i>Fax:</i> 419-530-4759 <i>E-Mail:</i> teresa.pasquinelli@utoledo.edu
SECRETARY I			
HEALTH AND REHABILITATIVE SERVICES			
PASUPULETI	SUDERSHAN	Ph.D.	<i>Mail Stop:</i> #119 <i>Office:</i> HH2620 <i>*Quick Dial:</i> 21-5338 <i>Phone:</i> 419-530-5338/4140 <i>Fax:</i> 419-530-4141 <i>E-Mail:</i> sudershan.pasupuleti@utoledo.edu
ASSOCIATE PROFESSOR			
SOCIAL WORK			
PERIAT	SHARON	A.A.S.	<i>Mail Stop:</i> #119 <i>Office:</i> HH1100B <i>*Quick Dial:</i> 21-5306 <i>Phone:</i> 419-530-5306/5360 <i>Fax:</i> 419-530-5366 <i>E-Mail:</i> sharon.periat@utoledo.edu
INTERIM DIRECTOR/RECORDS SPECIALIST			
STUDENT SERVICES			

*NOTE: Quick Dial from Main to HSC, dial #68 then the extension; from HSC to Main, dial #21 then the extension.

<i>Last Name</i>	<i>First Name</i>		<i>Contact Info</i>
PIAZZA	NICK	Ph.D., PCC	<i>Mail Stop:</i> #119 <i>Office:</i> HH3100D <i>*Quick Dial:</i> 21-4721 <i>Phone:</i> 419-530-4721/2718 <i>Fax:</i> 419-530-7879 <i>E-Mail:</i> nick.piazza@utoledo.edu
PROFESSOR, Counselor Education			
COUNSELOR EDUCATION AND SCHOOL PSYCHOLOGY			
PIETRAS	NANCY		<i>Mail Stop:</i> #119 <i>Office:</i> HH3017A <i>*Quick Dial:</i> 21-7229 <i>Phone:</i> 419-530-7229/7239 <i>Fax:</i> 419-530-7240 <i>E-Mail:</i> nancy.pietras@utoledo.edu
EXECUTIVE DIRECTOR			
TECH PREP			
PIETROSIMONE	BRIAN	Ph.D.	<i>Mail Stop:</i> #119 <i>Office:</i> HH2505J <i>*Quick Dial:</i> 21-4467 <i>Phone:</i> 419-530-4467/3741 <i>Fax:</i> 419-530-2477 <i>E-Mail:</i> brian.pietrosimone@utoledo.edu
ASSISTANT PROFESSOR, Athletic Training			
KINESIOLOGY			
PIZZA	FRANK	Ph.D.	<i>Mail Stop:</i> #119 <i>Office:</i> HH1416A <i>*Quick Dial:</i> 21-4178 <i>Phone:</i> 419-530-4178/2741 <i>Fax:</i> 419-530-2477 <i>E-Mail:</i> frank.pizza@utoledo.edu
PROFESSOR, Exercise Physiology			
KINESIOLOGY			
POSTA	JIM		<i>Mail Stop:</i> #119 <i>Office:</i> HH2032 <i>*Quick Dial:</i> 21-7226 <i>Phone:</i> 419-530-7226/7239 <i>Fax:</i> 419-530-7240 <i>E-Mail:</i> james.posta@utoledo.edu
CONSULTANT			
TECH PREP/HSTW			
PRIOR	MICHAEL	Ph.D., M.S.S.W., B.A.	<i>Mail Stop:</i> #119 <i>Office:</i> HH2614 <i>*Quick Dial:</i> 21-5187 <i>Phone:</i> 419-530-5187/4140 <i>Fax:</i> 419-530-4141 <i>E-Mail:</i> michael.prior@utoledo.edu
ASSISTANT PROFESSOR			
SOCIAL WORK			
RANKIN	JAMES	Ph.D.	<i>Mail Stop:</i> #119 <i>Office:</i> HH2512 <i>*Quick Dial:</i> 21-2752 <i>Phone:</i> 419-530-2752/2741 <i>Fax:</i> 419-530-2477 <i>E-Mail:</i> james.rankin@utoledo.edu
ASSOCIATE PROFESSOR, Athletic Training			
KINESIOLOGY			
REAMS	ANDREA	B.S., M.Ed.	<i>Mail Stop:</i> #119 <i>Office:</i> HH1000A <i>*Quick Dial:</i> 21-4950 <i>Phone:</i> 419-530-4950/2743 <i>Fax:</i> 419-530-4759 <i>E-Mail:</i> andrea.reams@utoledo.edu
VISITING ASSISTANT PROFESSOR, Health Education			
HEALTH AND REHABILITATIVE SERVICES			

*NOTE: Quick Dial from Main to HSC, dial #68 then the extension; from HSC to Main, dial #21 then the extension.

<i>Last Name</i>	<i>First Name</i>		<i>Contact Info</i>
REED	KATHLEEN	J.D.	<i>Mail Stop:</i> #119
ASSOCIATE PROFESSOR, CHAIRPERSON			<i>Office:</i> HH1300A
			<i>*Quick Dial:</i> 21-7746
UNDERGRADUATE LEGAL SPECIALTIES			<i>Phone:</i> 419-530-7746
			<i>Fax:</i> 419-530-7752
			<i>E-Mail:</i> kathleen.reed@utoledo.edu
RICE	ANGEL	B.A., A.A.B.	<i>Mail Stop:</i> #119
SECRETARY II			<i>Office:</i> HH2400G
			<i>*Quick Dial:</i> 21-5307
DEAN'S OFFICE			<i>Phone:</i> 419-530-5307
			<i>Fax:</i> 419-530-5541
			<i>E-Mail:</i> angel.rice@utoledo.edu
RICE	MARTIN	Ph.D., OTR/L	<i>Mail Stop:</i> #1027
PROFESSOR			<i>Office:</i> CB4214
			<i>*Quick Dial:</i> 68-4713
OCCUPATIONAL THERAPY			<i>Phone:</i> 419-383-4713/3519
			<i>Fax:</i> 419-383-5880
			<i>E-Mail:</i> martin.rice@utoledo.edu
RITCHIE	MARTIN	Ed.D., PC, NCC	<i>Mail Stop:</i> #119
PROFESSOR, CHAIRPERSON			<i>Office:</i> HH3100B
			<i>*Quick Dial:</i> 21-4775
COUNSELOR EDUCATION AND SCHOOL PSYCHOLOGY			<i>Phone:</i> 419-530-4775/2718
			<i>Fax:</i> 419-530-7879
			<i>E-Mail:</i> martin.ritchie@utoledo.edu
RIVERS	DEBORAH		<i>Mail Stop:</i> #119
CONSULTANT			<i>Office:</i> HH2030
			<i>*Quick Dial:</i> 21-7220
TECH PREP/HSTW			<i>Phone:</i> 419-530-7220/7239
			<i>Fax:</i> 419-530-7240
			<i>E-Mail:</i> deborah.rivers@utoledo.edu
SALYERS	KATHLEEN	Ph.D., PCC	<i>Mail Stop:</i> #119
ASSOCIATE PROFESSOR, Counselor Education			<i>Office:</i> HH3100C
			<i>*Quick Dial:</i> 21-6125
COUNSELOR EDUCATION AND SCHOOL PSYCHOLOGY			<i>Phone:</i> 419-530-6125/2718
			<i>Fax:</i> 419-530-7879
			<i>E-Mail:</i> kathleen.salyers@utoledo.edu
SCHAEFER	JENNIFER		<i>Mail Stop:</i> #318
DIRECTOR OF DEVELOPMENT			<i>Office:</i> DC1005D
			<i>*Quick Dial:</i> 21-2408
OFFICE OF INSTITUTIONAL ADVANCEMENT			<i>Phone:</i> 419-530-2408/8476
			<i>Fax:</i> 419-530-4340
			<i>E-Mail:</i> jennifer.schaefer@utoledo.edu
SCHEUERMANN	BARRY	Ph.D.	<i>Mail Stop:</i> #119
ASSOCIATE PROFESSOR, Exercise Physiology			<i>Office:</i> HH1407B
			<i>*Quick Dial:</i> 21-2692
KINESIOLOGY			<i>Phone:</i> 419-530-2692/2741
			<i>Fax:</i> 419-530-2477
			<i>E-Mail:</i> barry.scheuermann@utoledo.edu

*NOTE: Quick Dial from Main to HSC, dial #68 then the extension; from HSC to Main, dial #21 then the extension.

<i>Last Name</i>	<i>First Name</i>		<i>Contact Info</i>
SCHLAGETER	JOHN, III	J.D.	<i>Mail Stop:</i> #119 <i>Office:</i> HH1300K <i>*Quick Dial:</i> 21-7748 <i>Phone:</i> 419-530-7748 <i>Fax:</i> 419-530-7752 <i>E-Mail:</i> john.schlageter@utoledo.edu
LECTURER			
UNDERGRADUATE LEGAL SPECIALTIES			
SCHMOLL	BEVERLY	PT, Ph.D., FAPTA	<i>Mail Stop:</i> #119 <i>Office:</i> HH3302 <i>*Quick Dial:</i> 21-5451 <i>Phone:</i> 419-530-5451/5453 <i>Fax:</i> 419-530-5540 <i>E-Mail:</i> beverly.schmoll@utoledo.edu
PROFESSOR AND DEAN			
DEAN'S OFFICE			
SCHNEIDER	DEBRA	M.A.	<i>Mail Stop:</i> #119 <i>Office:</i> HH3028 <i>*Quick Dial:</i> 21-7237 <i>Phone:</i> 419-530-7237/7220 <i>Fax:</i> 419-530-7240 <i>E-Mail:</i> debra.schneider@utoledo.edu
PROJECT MANAGER			
TECH PREP/HSTW			
SCHWARTZ	AMANDA		<i>Mail Stop:</i> #318 <i>Office:</i> DC2001F <i>*Quick Dial:</i> 21-7859 <i>Phone:</i> 419-530-7859/8476 <i>Fax:</i> 419-530-4994 <i>E-Mail:</i> amanda.schwartz@utoledo.edu
ASSISTANT DIRECTOR			
ALUMNI RELATIONS			
SCHWEINHAGEN	ALAN	SFC (Ret)	<i>Mail Stop:</i> #217 <i>Office:</i> HE2080 <i>*Quick Dial:</i> 21-4146 <i>Phone:</i> 419-530-4146/2681 <i>Fax:</i> 419-530-4698 <i>E-Mail:</i> alan.schweinhagen@utoledo.edu
INSTRUCTOR			
MILITARY SCIENCE			
SEEMANN	DANIEL	Ph.D.	<i>Mail Stop:</i> #119 <i>Office:</i> HH3100L <i>*Quick Dial:</i> 21-2697 <i>Phone:</i> 419-530-2697/2718 <i>Fax:</i> 419-530-7879 <i>E-Mail:</i> daniel.seemann@utoledo.edu
SUPERANNUATE, Counselor Education			
COUNSELOR EDUCATION AND SCHOOL PSYCHOLOGY			
SEIBER	MARY JO	M.S.N., R.N.	<i>Mail Stop:</i> #119 <i>Office:</i> HH1003D <i>*Quick Dial:</i> 21-4577 <i>Phone:</i> 419-530-4577/2743 <i>Fax:</i> 419-530-4759 <i>E-Mail:</i> mary.seiber@utoledo.edu
ASSISTANT PROFESSOR, Health Education			
HEALTH AND REHABILITATIVE SERVICES			
SHUBA	JOHN	J.D.	<i>Mail Stop:</i> #119 <i>Office:</i> HH3018 <i>*Quick Dial:</i> 21-2185 <i>Phone:</i> 419-530-2185/2142 <i>Fax:</i> 419-530-2153 <i>E-Mail:</i> john.shuba@utoledo.edu
VISITING ASSISTANT PROFESSOR			
CRIMINAL JUSTICE			

*NOTE: Quick Dial from Main to HSC, dial #68 then the extension; from HSC to Main, dial #21 then the extension.

<i>Last Name</i>	<i>First Name</i>		<i>Contact Info</i>
SHUMAN	RAHWAE		<i>Mail Stop:</i> #119
CONSULTANT			<i>Office:</i> HH2030
			<i>*Quick Dial:</i> 21-7220
			<i>Phone:</i> 419-530-7220/7239
TECH PREP/HSTW			<i>Fax:</i> 419-530-7240
			<i>E-Mail:</i> rahwae.shuman@utoledo.edu
SLOANE	HEATHER	M.S.W.	<i>Mail Stop:</i> #119
VISITING ASSISTANT PROFESSOR			<i>Office:</i> HH2607
			<i>*Quick Dial:</i> 21-5188
			<i>Phone:</i> 419-530-5188/4140
SOCIAL WORK			<i>Fax:</i> 419-530-4141
			<i>E-Mail:</i> heather.sloane@utoledo.edu
SMITH	TORI	M.S., PT, NCS	<i>Mail Stop:</i> #1027
CLINICAL ASSISTANT PROFESSOR			<i>Office:</i> CB4207
			<i>*Quick Dial:</i> 68-3779
			<i>Phone:</i> 419-383-3779/3518
PHYSICAL THERAPY			<i>Fax:</i> 419-383-5880
			<i>E-Mail:</i> tori.smith@utoledo.edu
SNODGRASS	TONI	B.S.B., A.B.A.	<i>Mail Stop:</i> #119
SR. COLLEGE INSTRUCTIONAL TECHNOLOGY ADMINISTRATOR			<i>Office:</i> HH2200C
			<i>*Quick Dial:</i> 21-5314
			<i>Phone:</i> 419-530-5314
EDUCATION AND INFORMATIONAL TECHNOLOGY			<i>Fax:</i> 419-530-5541
			<i>E-Mail:</i> toni.snodgrass@utoledo.edu
SOKOL	DENNIS	MBA, MHA, FACHE	<i>Mail Stop:</i> #119
VISITING ASSISTANT PROFESSOR, Health Care Administration			<i>Office:</i> HH1003K
			<i>*Quick Dial:</i> 21-2939
			<i>Phone:</i> 419-530-2939/2743
HEALTH AND REHABILITATIVE SERVICES			<i>Fax:</i> 419-530-4759
			<i>E-Mail:</i> dennis.sokol@utoledo.edu
SPIROS	MICHAEL	J.D.	<i>Mail Stop:</i> #119
ASSOCIATE PROFESSOR			<i>Office:</i> HH1300H
			<i>*Quick Dial:</i> 21-7732
			<i>Phone:</i> 419-530-7732
UNDERGRADUATE LEGAL SPECIALTIES			<i>Fax:</i> 419-530-7752
			<i>E-Mail:</i> michael.spiros@utoledo.edu
STEVENSON	MICHAEL	M.Ed.	<i>Mail Stop:</i> #119
ASSISTANT PROFESSOR			<i>Office:</i> HH3010
			<i>*Quick Dial:</i> 21-5352
			<i>Phone:</i> 419-530-5352/2142
CRIMINAL JUSTICE			<i>Fax:</i> 419-530-2153
			<i>E-Mail:</i> michael.stevenson@utoledo.edu
STURDIVANT	STACI	M.Ed.	<i>Mail Stop:</i> #119
ADVISER - COMMUNITY HEALTH, HEALTH CARE ADMINISTRATION, PARALEGAL, REC THERAPY, SLP			<i>Office:</i> HH1100D
			<i>*Quick Dial:</i> 21-5363
			<i>Phone:</i> 419-530-5363/5360
STUDENT SERVICES			<i>Fax:</i> 419-530-5366
			<i>E-Mail:</i> staci.sturdivant@utoledo.edu

*NOTE: Quick Dial from Main to HSC, dial #68 then the extension; from HSC to Main, dial #21 then the extension.

<i>Last Name</i>	<i>First Name</i>		<i>Contact Info</i>
SUH	EDWARD K.	Ph.D.	<i>Mail Stop:</i> #119 <i>Office:</i> HH2616 <i>*Quick Dial:</i> 21-4657 <i>Phone:</i> 419-530-4657/4140 <i>Fax:</i> 419-530-4141 <i>E-Mail:</i> edward.suh@utoledo.edu
ASSOCIATE PROFESSOR			
SOCIAL WORK			
TELLJOHANN	SUSAN	H.S.D., CHES	<i>Mail Stop:</i> #119 <i>Office:</i> HH1012 <i>*Quick Dial:</i> 21-4369 <i>Phone:</i> 419-530-4369/2743 <i>Fax:</i> 419-530-4759 <i>E-Mail:</i> susan.telljohann@utoledo.edu
PROFESSOR, Health Education			
HEALTH AND REHABILITATIVE SERVICES			
TESSLER	HEATHER	M.A.	<i>Mail Stop:</i> #119 <i>Office:</i> HH1100A <i>*Quick Dial:</i> 21-4462 <i>Phone:</i> 419-530-4462/5360 <i>Fax:</i> 419-530-5366 <i>E-Mail:</i> heather.tessler@utoledo.edu
ADVISER - RESP CARE, SOCIAL WORK AND UNDECIDED			
STUDENT SERVICES			
THOMAS	JULIE JEPSEN	Ph.D., OTR/L, FAOTA	<i>Mail Stop:</i> #1027 <i>Office:</i> CB4420 <i>*Quick Dial:</i> 68-5068 <i>Phone:</i> 419-383-5068/3519 <i>Fax:</i> 419-383-5880 <i>E-Mail:</i> juliej.thomas@utoledo.edu
PROFESSOR, CHAIRPERSON			
OCCUPATIONAL THERAPY			
THOMPSON	AMY	Ph.D., CHES	<i>Mail Stop:</i> #119 <i>Office:</i> HH1010 <i>*Quick Dial:</i> 21-4171 <i>Phone:</i> 419-530-4171/2743 <i>Fax:</i> 419-530-4759 <i>E-Mail:</i> amy.thompson@utoledo.edu
ASSISTANT PROFESSOR, Health Education			
HEALTH AND REHABILITATIVE SERVICES			
THOMPSON	GEORGE	M.S.W.	<i>Mail Stop:</i> #119 <i>Office:</i> HH2605 <i>*Quick Dial:</i> 21-4197 <i>Phone:</i> 419-530-4197/4140 <i>Fax:</i> 419-530-4141 <i>E-Mail:</i> george.thompson@utoledo.edu
CAMPUS COORDINATOR FOR CWWEP			
SOCIAL WORK			
TRIPEPI	SHERRY	M.S.W., LISW-S	<i>Mail Stop:</i> #119 <i>Office:</i> HH2618 <i>*Quick Dial:</i> 21-4746 <i>Phone:</i> 419-530-4746/4140 <i>Fax:</i> 419-530-4141 <i>E-Mail:</i> sherry.tripepi@utoledo.edu
VISITING ASSISTANT PROFESSOR & BSW FIELD COORDINATOR			
SOCIAL WORK			
TROXELL	MICHAEL L.	Ph.D., RRT	<i>Mail Stop:</i> #119 <i>Office:</i> HH2003C <i>*Quick Dial:</i> 21-4656 <i>Phone:</i> 419-530-4656 <i>Fax:</i> 419-530-4780 <i>E-Mail:</i> michael.troxell@utoledo.edu
ASSOCIATE LECTURER, Respiratory Care			
HEALTH PROFESSIONS			

*NOTE: Quick Dial from Main to HSC, dial #68 then the extension; from HSC to Main, dial #21 then the extension.

<i>Last Name</i>	<i>First Name</i>		<i>Contact Info</i>
TUCKER-GAIL	KASEY	Ph.D.	<i>Mail Stop:</i> #119
ASSISTANT PROFESSOR			<i>Office:</i> HH3014
<i>CRIMINAL JUSTICE</i>			<i>*Quick Dial:</i> 21-4314
			<i>Phone:</i> 419-530-4314/2142
			<i>Fax:</i> 419-530-2153
			<i>E-Mail:</i> kasey.tucker@utoledo.edu
VENTURA	LOIS	Ph.D.	<i>Mail Stop:</i> #119
ASSOCIATE PROFESSOR, INTERIM CHAIRPERSON			<i>Office:</i> HH3000A
<i>CRIMINAL JUSTICE</i>			<i>*Quick Dial:</i> 21-2660
			<i>Phone:</i> 419-530-2660/2142
			<i>Fax:</i> 419-530-2153
			<i>E-Mail:</i> lois.ventura@utoledo.edu
VETETO	STEVEN	MSG	<i>Mail Stop:</i> #217
INSTRUCTOR			<i>Office:</i> HE2040
<i>MILITARY SCIENCE</i>			<i>*Quick Dial:</i> 21-4695
			<i>Phone:</i> 419-530-4695/2681
			<i>Fax:</i> 419-530-4698
			<i>E-Mail:</i> steven.veteto@utoledo.edu
WAMBOLD	SUZANNE	Ph.D., R.N., RDCS	<i>Mail Stop:</i> #119
PROFESSOR, CHAIRPERSON, Director, Cardiovascular Technology			<i>Office:</i> HH2000
<i>HEALTH PROFESSIONS</i>			<i>*Quick Dial:</i> 21-4688
			<i>Phone:</i> 419-530-4688
			<i>Fax:</i> 419-530-4780
			<i>E-Mail:</i> suzanne.wambold@utoledo.edu
WEDDING	MARY ELLEN	M.Ed., CMA, CPC, MT, (ASCP)	<i>Mail Stop:</i> #119
PROFESSOR, Health Information Mgt.			<i>Office:</i> HH2024
<i>HEALTH PROFESSIONS</i>			<i>*Quick Dial:</i> 21-4757
			<i>Phone:</i> 419-530-4757
			<i>Fax:</i> 419-530-4780
			<i>E-Mail:</i> mary.wedding@utoledo.edu
WEDLEY	WILLIAM	MAJ, M.A.	<i>Mail Stop:</i> #217
ASSISTANT PROFESSOR			<i>Office:</i> HE2040
<i>MILITARY SCIENCE</i>			<i>*Quick Dial:</i> 21-5318
			<i>Phone:</i> 419-530-5318/2681
			<i>Fax:</i> 419-530-4698
			<i>E-Mail:</i> william.wedley@utoledo.edu
WILKINS	JACQUELINE	B.Ed., RKT	<i>Mail Stop:</i> #201
DIRECTOR, PMD PROGRAM			<i>Office:</i> HE1190
<i>KINESIOLOGY</i>			<i>*Quick Dial:</i> 21-2756
			<i>Phone:</i> 419-530-2756
			<i>Fax:</i> 419-530-5345
			<i>E-Mail:</i> jacqueline.wilkins@utoledo.edu
WILLIAMSON	CELIA	Ph.D.	<i>Mail Stop:</i> #119
PROFESSOR			<i>Office:</i> HH2622
<i>SOCIAL WORK</i>			<i>*Quick Dial:</i> 21-4084
			<i>Phone:</i> 419-530-4084/4140
			<i>Fax:</i> 419-530-4141
			<i>E-Mail:</i> celia.williamson@utoledo.edu

*NOTE: Quick Dial from Main to HSC, dial #68 then the extension; from HSC to Main, dial #21 then the extension.

<i>Last Name</i>	<i>First Name</i>		<i>Contact Info</i>
WINTGENS	MARK	M.A., B.Ed.	<i>Mail Stop:</i> #119 <i>Office:</i> HH1100E <i>*Quick Dial:</i> 21-4460 <i>Phone:</i> 419-530-4460/5360 <i>Fax:</i> 419-530-5366 <i>E-Mail:</i> mark.wintgens@utoledo.edu
ADVISER - CRIMINAL JUSTICE, REC AND LEISURE STUDIES			
STUDENT SERVICES			
WOODS	DORIS	Ph.D., RKT	<i>Mail Stop:</i> #201 <i>Office:</i> HE1190A <i>*Quick Dial:</i> 21-2731 <i>Phone:</i> 419-530-2731 <i>Fax:</i> 419-530-5345 <i>E-Mail:</i> doris.woods@utoledo.edu
DIRECTOR & INTERNSHIP COORDINATOR, KINESIOTHERAPY PROGRAM			
KINESIOLOGY			
YAMAGUCHI	MITZI		<i>Mail Stop:</i> #119 <i>Office:</i> HH2503 <i>*Quick Dial:</i> 21-2741 <i>Phone:</i> 419-530-2741 <i>Fax:</i> 419-530-2477 <i>E-Mail:</i> mitizi.yamaguchi@utoledo.edu
SECRETARY I			
KINESIOLOGY			
YBARRA	DAVID	SGT	<i>Mail Stop:</i> #217 <i>Office:</i> HE2050 <i>*Quick Dial:</i> 21-7798 <i>Phone:</i> 419-530-7798/2681 <i>Fax:</i> 419-530-4698 <i>E-Mail:</i> david.ybarra@us.army.mil
OHIO ARMY NATIONAL GUARD RECRUITER			
MILITARY SCIENCE			
ZBINDEN	JANE	M.Ed.	<i>Mail Stop:</i> #119 <i>Office:</i> HH3302C <i>*Quick Dial:</i> 21-5453 <i>Phone:</i> 419-530-5453 <i>Fax:</i> 419-530-5540 <i>E-Mail:</i> jane.zbinden@utoledo.edu
ADMINISTRATIVE ASSISTANT TO THE DEAN			
DEAN'S OFFICE			

*NOTE: Quick Dial from Main to HSC, dial #68 then the extension; from HSC to Main, dial #21 then the extension.