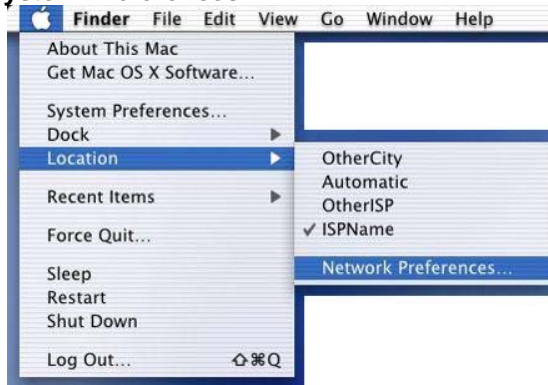
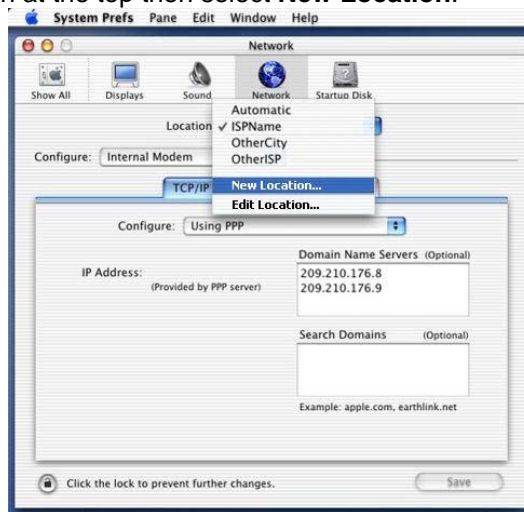


MAC OSX UT DIAL UP INSTRUCTIONS

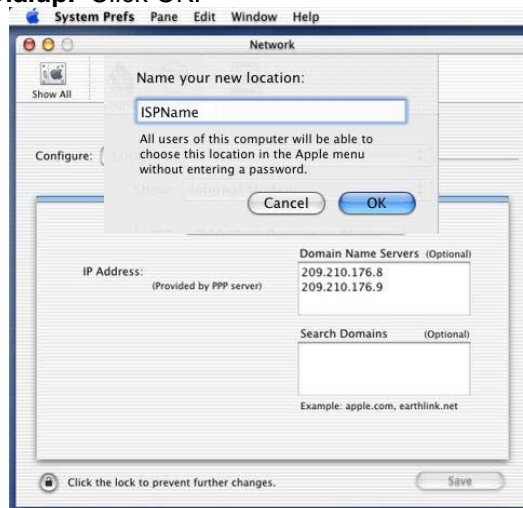
1. Click **Apple Menu>System Preferences.**



2. Click the **Network** icon at the top then select **New Location.**



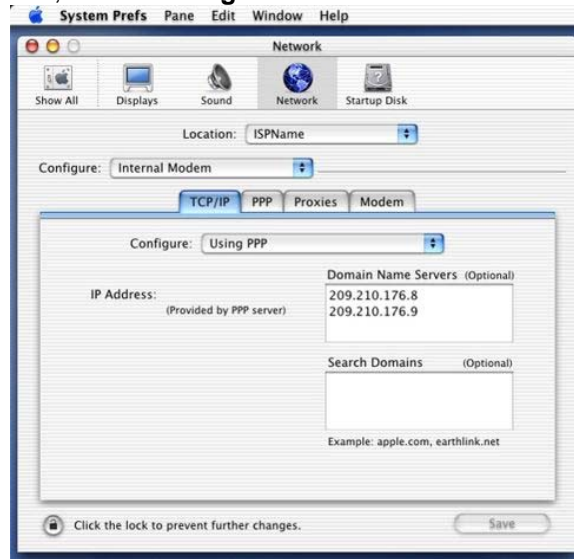
3. Name the location **UT Dialup.** Click **OK.**



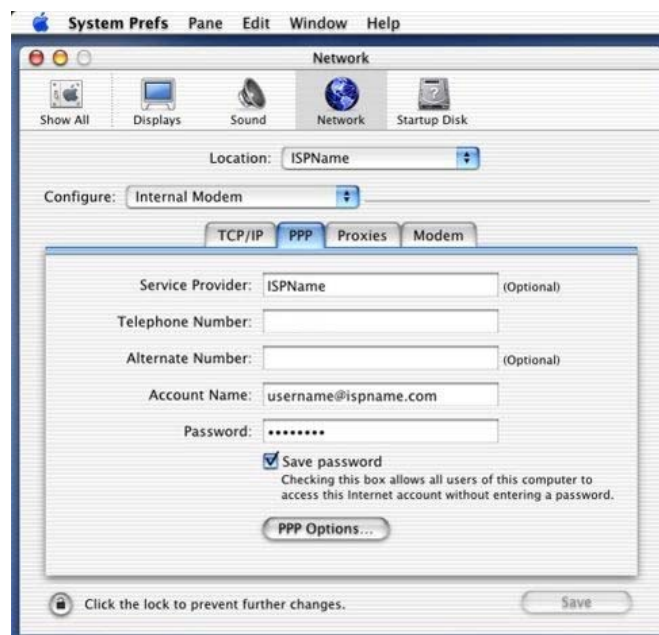
4. Select the **TCP/IP** tab.

MAC OSX UT DIAL UP INSTRUCTIONS

- In the first Configure drop down box, make sure **Internal Modem** is select. In the second **Configure** drop down box, choose **Using PPP**.



- Select the **PPP** tab.
- Type in the following information in the boxes:
 - Service Provider: UT
 - Telephone Number: see #8 below
 - Alternate Number: Leave blank
 - Account Name: Your UTAD username
 - Password: Your UTAD password
- Phone number:
 - Students, Faculty, Staff off Campus 419-385-4321** (2hr limit), **419-539-2416** (20min limit). After time has expired, reconnect.
 - Alumni use 419-324-0050, Scimatec use 419-324-0070**



- Check the box to Save Password (optional), click the Save button.